



New Information in CSLAP Reports

Aquatic Invasive Species
Watershed and Lake Use Maps

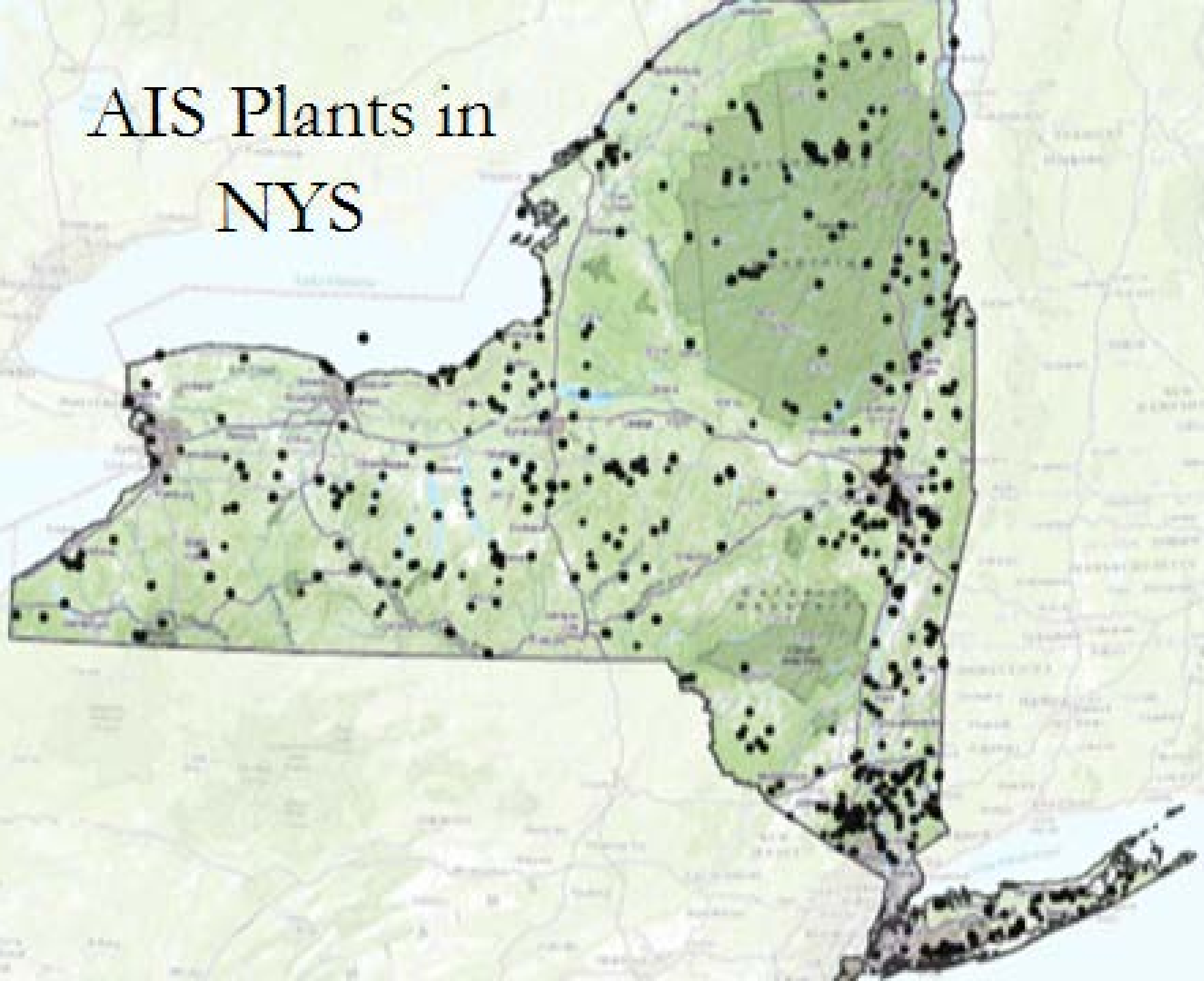
Janet Andersen, NYSFOLA Board of Directors
Scott Kishbaugh, NYSDEC DOW

Aquatic Invasive Species (AIS)

Why did we add this information?

- AIS can significantly impact lakes
- Spread by humans, wildlife, floods, ...
- The best control is prevention
 - Some invasions can be controlled if small and found quickly
- AIS resources can be difficult to access
- You asked for it!

AIS Plants in NYS



AIS - Appendix E

Aquatic Invasive Species - Sullivan County			
Waterbody	Kingdom	Common name	Scientific name
Beaverman Lake	Plant	European frogbit	<i>Hydrocharis morsus-ranae</i>
Black Lake	Plant	Water chestnut	<i>Trapa natans</i>
Cliff Lake	Plant	Fanwort	<i>Cabomba caroliniana</i>
Kiamesha Lake	Plant	Eurasian watermilfoil	<i>Myriophyllum spicatum</i>
Martin Lake	Plant	Fanwort	<i>Cabomba caroliniana</i>
Sackett Lake	Plant	Curly leafed pondweed	<i>Potamogeton crispus</i>
Saint Josephs Lake	Plant	Floating primrose willow	<i>Ludwigia peploides ssp. glabrescens</i>
Silver Lake	Plant	Curly leafed pondweed	<i>Potamogeton crispus</i>
Silver Lake	Plant	Water chestnut	<i>Trapa natans</i>
Swan Lake	Plant	Curly leafed pondweed	<i>Potamogeton crispus</i>
Swan Lake	Plant	Water chestnut	<i>Trapa natans</i>
Swinging Bridge Reservoir	Animal	Common carp	<i>Cyprinus carpio</i>
Waneta Lake	Plant	Eurasian watermilfoil	<i>Myriophyllum spicatum</i>
White Lake	Plant	Eurasian watermilfoil	<i>Myriophyllum spicatum</i>

Aquatic Invasive Species (AIS)

What does the report contain?

- AIS listing by county
- Waterbodies with the identified AIS
 - Common and scientific name

How can it be used?

- Scan the waterbodies that might be a threat
 - Close by, tributaries, shared events, ...
- If you don't know about the AIS, investigate!
- Survey your lake for AIS!!!!



Aquatic Invasive Species (AIS)

Cautions:

- Lists are not complete
 - Only what has been reported to iMAP and DEC
 - Reports take time to verify and consolidate
 - New AIS might not yet be on regulated lists
- Boats, wildlife, and invasives don't stay in county
 - Ask if you'd like to see other county lists
- Some AIS are more trouble than others
- Some AIS are more likely to spread than others



Aquatic Invasive Species (AIS)

- Feedback welcomed
 - Is this information helpful?
 - What would make this more helpful?
- Are we missing known invasives?
 - Give species name & location to DOWinfo@dec.ny.gov
 - Send photo and coordinates if possible
- Tell us if our listings have an AIS that's not there!



While we're at it...



Curly-leaf pondweed

CSLAP plant photos please!

- Recently, few plant reports

How?

- Collect plant samples
 - try to get flowers, seeds, roots
 - (mostly) mature plants needed for positive identification
 - July thru September for most plants
- Photograph on white surface
- Provide description & location
- Email images to:
scott.kishbaugh@dec.ny.gov

And now
for something
completely different...



Appendix F

Watershed and Land Use Map

Watershed

- All the land that drains to a single point – the outlet



Land Use

- The type of activity that takes place on the land



Watershed and Land Use Map

Why did we add this information?

- Lakes reflect what happens in the watershed
- Watershed to lake ratio rough estimate of influence from the watershed
- Land use predicts runoff
 - Amount of runoff vs infiltration
 - Amount of pollution likely in runoff
- Land uses change over time
 - Dependent on source data timing

Watershed & Land Use Map

Forest

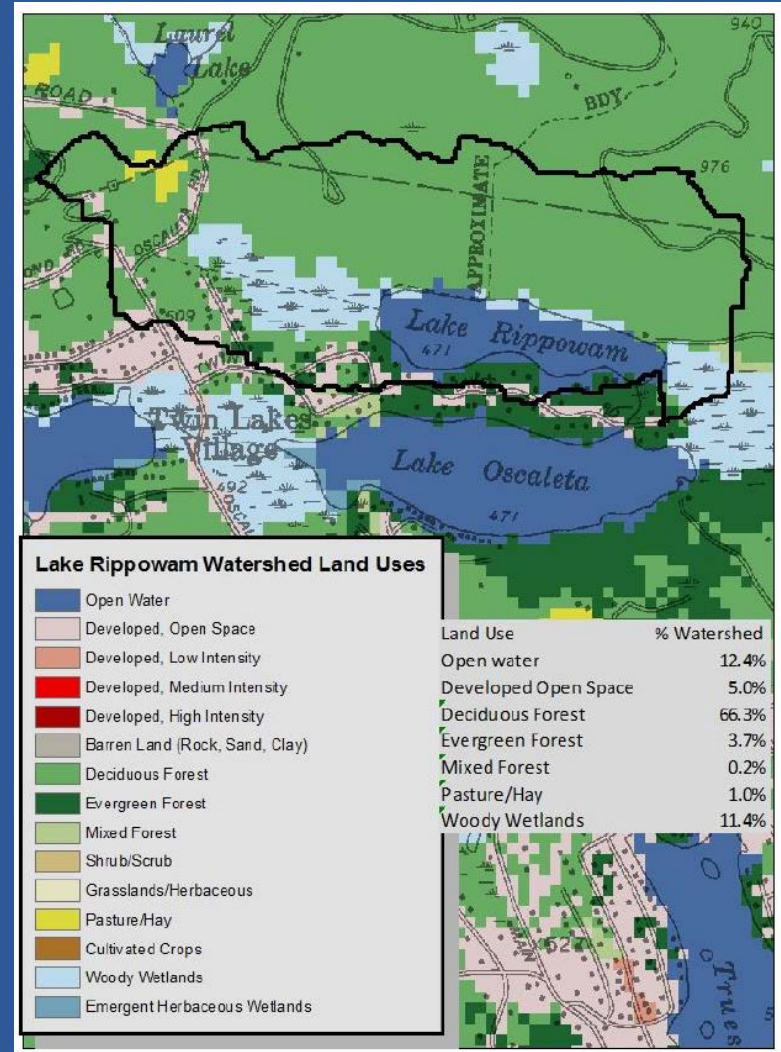
- Less runoff, less nutrients

Developed lands

- More runoff & nutrients
- Lawn fertilizer & pesticides?

Pasture & cultivation

- Ag fertilizers & pesticides?

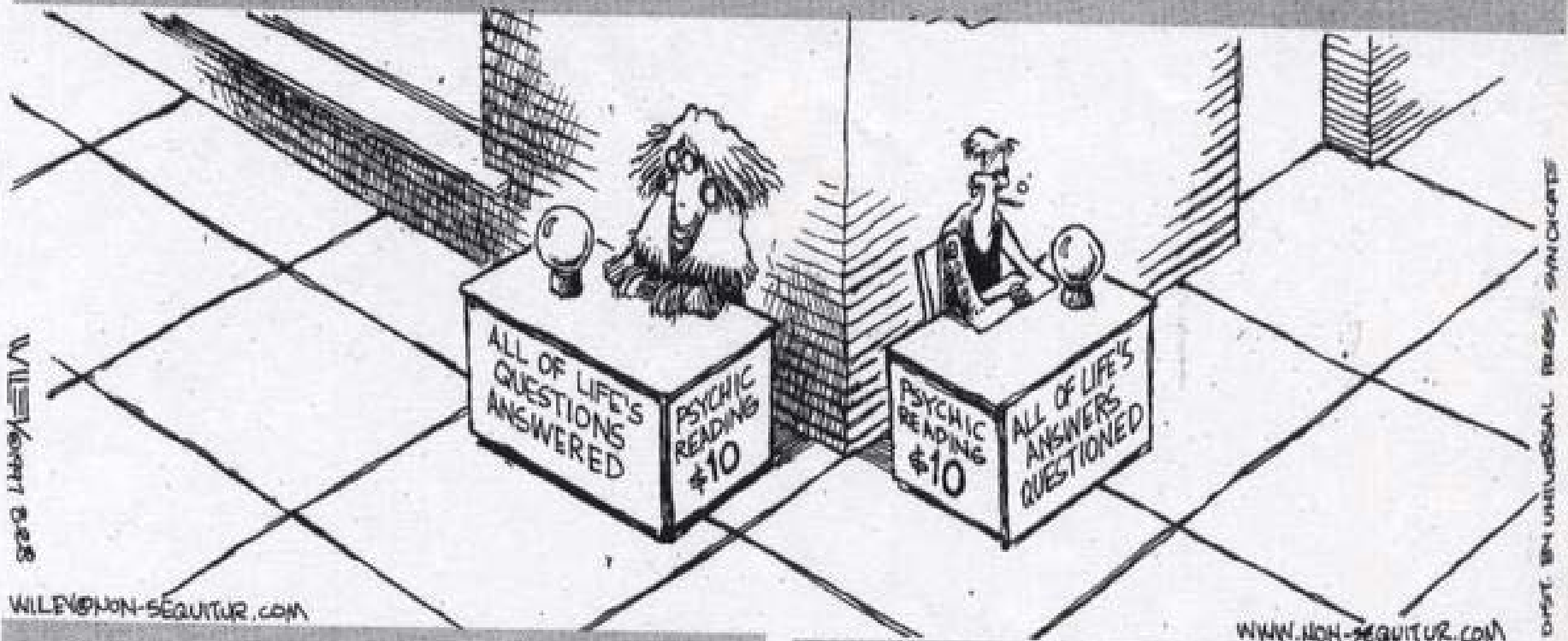


Watershed and Land Use Map

- Feedback welcomed
 - Is this information helpful?
 - What would make this more helpful?
- Future uses of data under consideration
 - Nutrient loading estimates for CSLAP lakes
 - Focus watershed management actions, prioritize funding, identify susceptible waterbodies
- May increase focus on non-lake actions
- May help us understand why lakes that are similar on paper have different outcomes

Questions?

NON SEQUITUR BY WILEY



WILEY

WWW.NON-SEQUITUR.COM

WWW.NON-SEQUITUR.COM

©1997 BY UNIVERSAL PICS SYNDICATE