



Owasco Watershed Lake Association

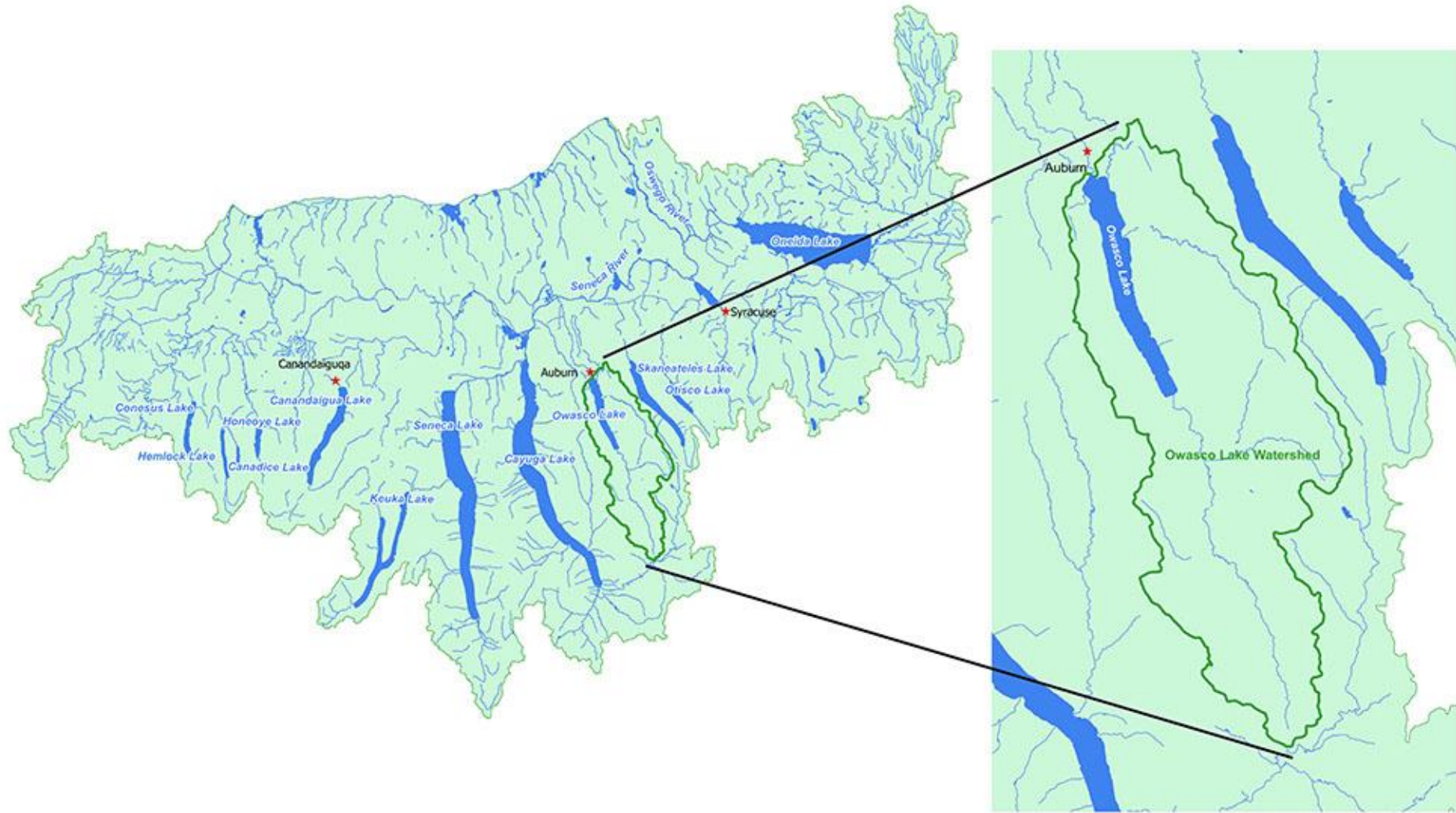
www.owla.org



Owasco Watershed Lake Association

THE VOICE OF THE LAKE

Where is Owasco Lake in the Finger Lakes?



IT'S NOT JUST THE WATER; IT'S THE 'SHED.

Owasco Lake:

- Sixth largest of the Finger Lakes
- The lake is 11.1 miles long
- Maximum width of 1.3 miles
- Maximum depth of 177 feet
- Surface elevation of 712 feet above sea level
- The lake has a volume of 212 billion US gallons



IT'S NOT JUST THE WATER; IT'S THE 'SHED.

Owasco Lake:

- Drains a 208 square mile watershed
- The largest lake to watershed ratio (1:20) of all the Finger Lakes.
- This ratio means that for every one square mile of lake, there are 20 square miles of land in the watershed!
- This means that Owasco Lake's water quality is greatly impacted by the activities occurring on the land.

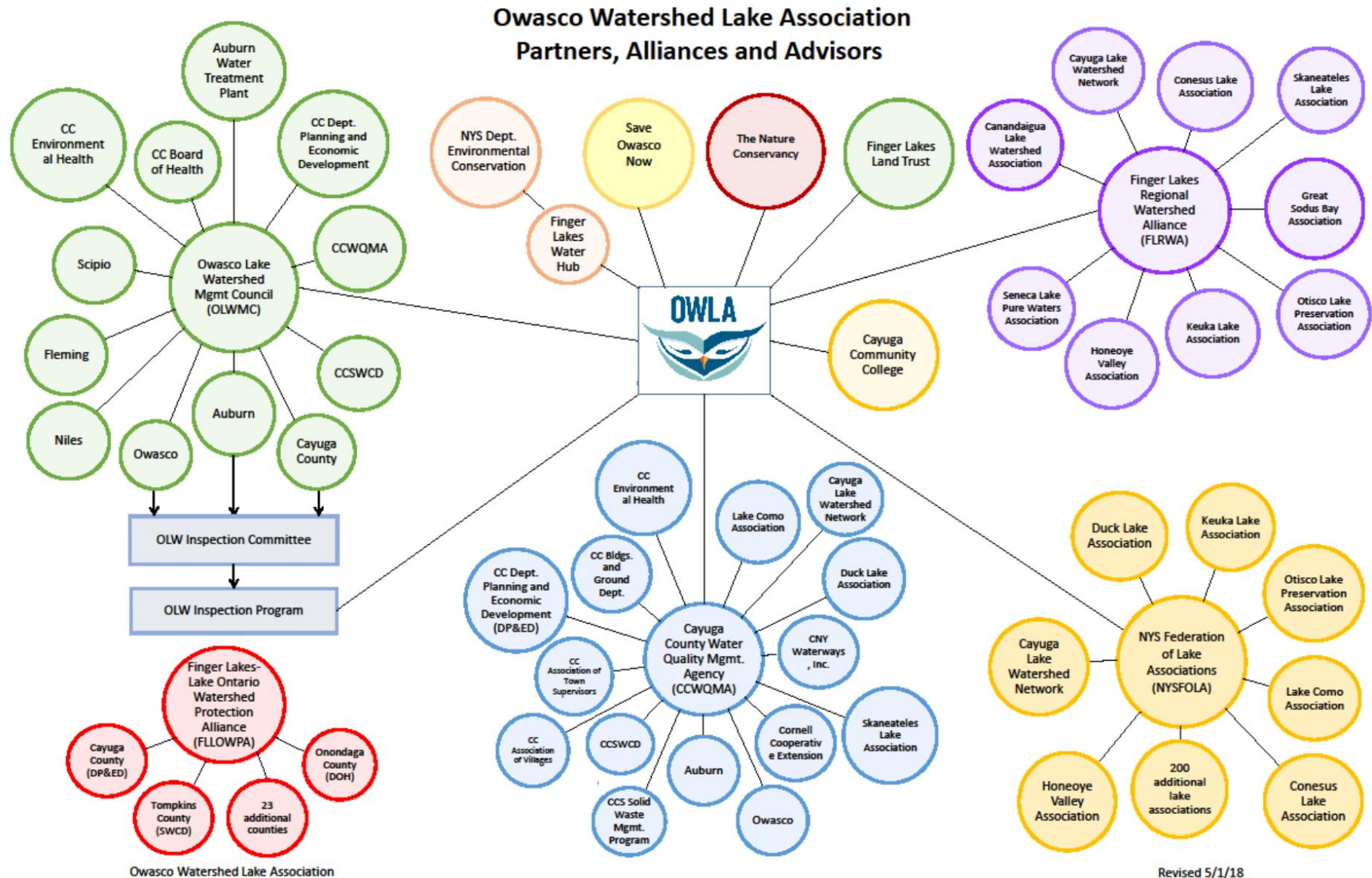


IT'S NOT JUST THE WATER; IT'S THE 'SHED.

Make no mistake,
what we do in the 'shed,
ends up in the lake.



OWLA Collaborates With These Stakeholder Organizations





Owasco Watershed Lake Association

**Concerned landowners
and citizens**

**Advocates for policies,
innovation,
and best practices**



Help!



**Harmful Algal Bloom
October, 2017**



**Manure Spill
April, 2014**

What's happening to our Lake?

Harmful Algae Blooms (HABs)

Toxic levels 80x more
than DEC limits

Negatively impacting
our economy and quality of life

**THIS CAN'T BE
THE NEW NORMAL**



Cayuga Lake is the collection point for all of the water in the 208-square-mile Cayuga Watershed.



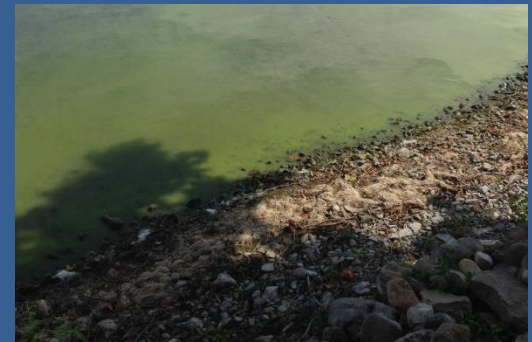
Owasco Watershed Lake Association

OWLA Volunteers

Take water samples from April to November to support numerous research projects

Walk the shoreline looking for HAB outbreaks and taking samples when found

Support the DEC's Citizen Statewide Lake Assessment Program & Quagga Research





In the Water

- Disrupt HAB Lifecycles – In lake mitigation/Research/Bubblers & Ultrasound
- Citizen Science Lake Assessment Program (CSLAP)
- Quagga Infestation – HAB Impact Research
- Lake Level Study – Update the Rule Curve





In the 'Shed

- Identify & Mitigate Nutrient Hotspots – Move upstream
- Ag Nutrient/Sediment Reduction – Shovels in ground
- Update Watershed Rules and Regulations
- Education & Outreach
 - 'Be Watershed Aware' Campaign
 - March to Lake Day Symposium





In the Water

- HAB Monitoring Program
- Citizen Science Lake Assessment Program (CSLAP)
- In-lake near shore and in-tributary monitoring devices
- Weed Harvester





In the 'Shed

- Identify & Mitigate Nutrient Hotspots – Move upstream
- Ditch Improvement Program – Hydroseeding and rip rap installation
- Continue to participate in updating Watershed Rules and Regulations
- Education & Outreach
 - 'Be Watershed Aware' Campaign
 - Bob Brower Symposium





What it takes...

- **Volunteers, volunteers, volunteers!!!!**
- **Closely collaborate with numerous stakeholders to ensure shared visions and plans – no wasted or duplicative efforts**
- **Identify what's best, what's next and who is doing what**
- **Find the funding**
- **Communicate, communicate, communicate**
- **Keep the faith!!**



Owasco Watershed Lake Association

It's time for everyone to become
WATERSHED AWARE
and be part of the solution
www.owla.org