



Kettle Lakes Association  
Tarki L. Heath  
May 3, 2024

NYS Federation Of Lake Associations Conference

**Session B3**

*Lake Associations Doing Great Things*

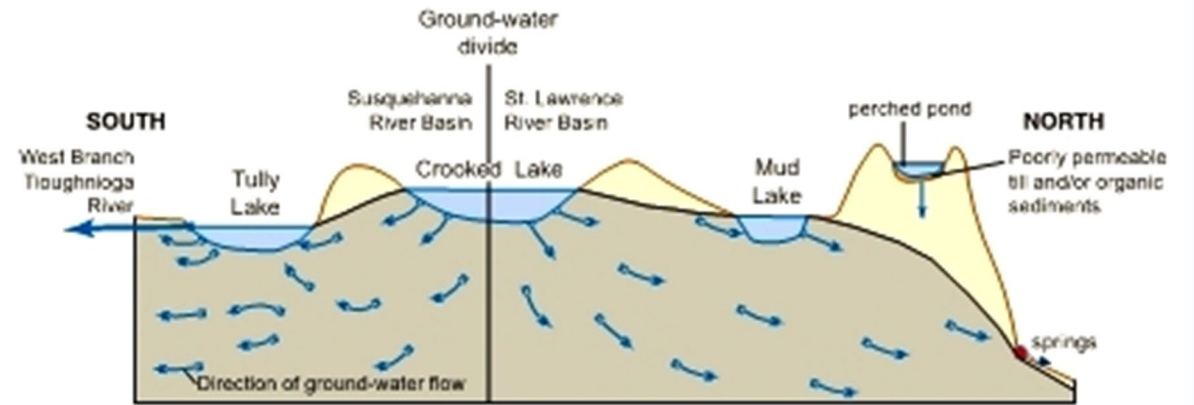
Long Lake Room

Creative Community Engagement

# Our Watersheds

Oswego River and Finger Lakes Basin to the Great Lakes

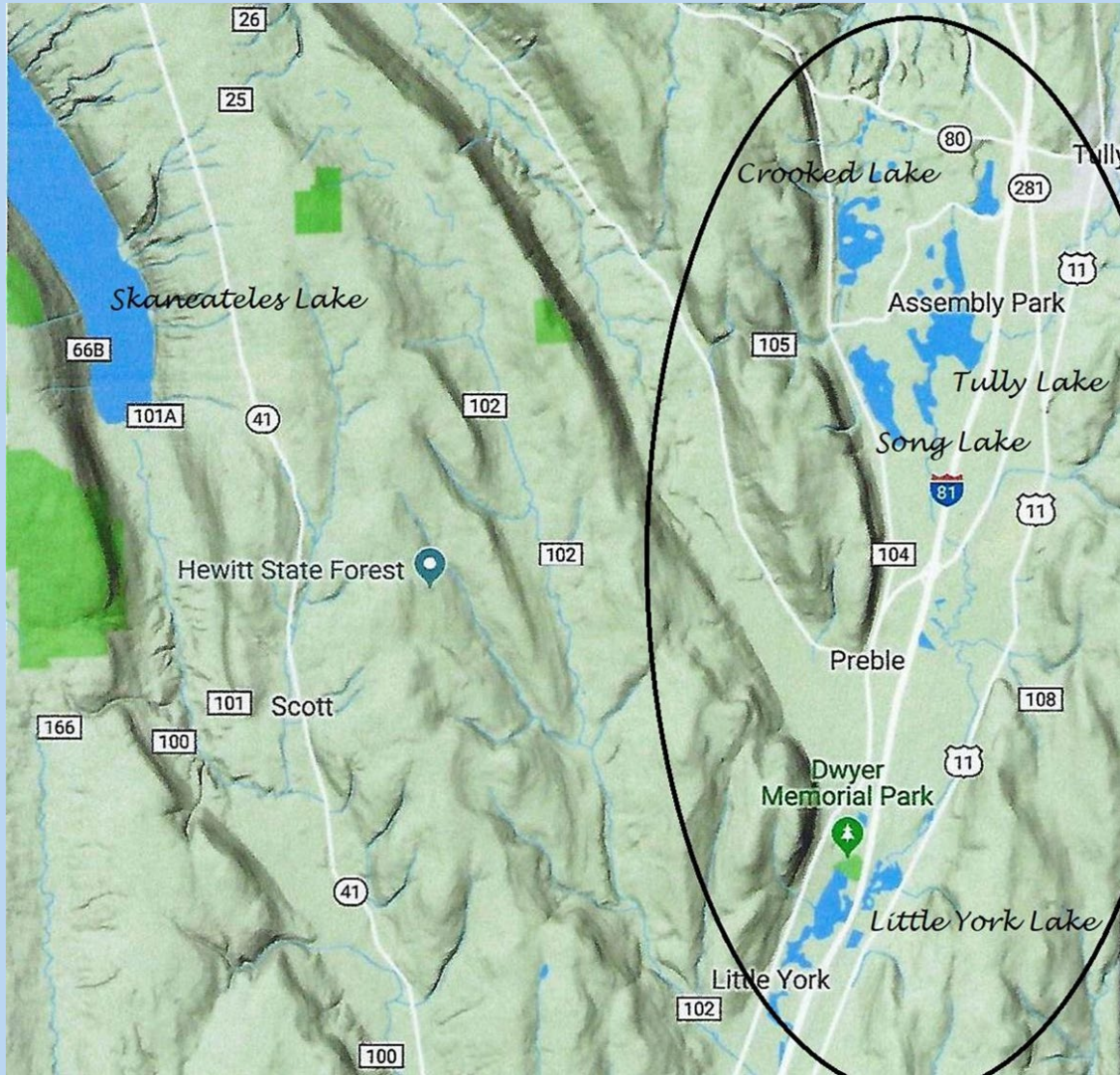
Upper Susquehanna River Basin to the Chesapeake Bay



Conceptual ground-water flow system for the Tully Lakes area, showing the interaction of kettle-hole lakes and the surficial aquifer.

USGS Hydrogeology of the Tully Lakes Area in Southern Onondaga and Northern Cortland Counties, NY - Kappel, Miller, Hetcher

# Our Lakes



## **Crooked Lake**

1,459 acre watershed,  
106 acre lake,  
14:1 watershed to lake ratio.

## **Little York Lake:**

19,296 acre watershed,  
101 acre lake,  
191:1 watershed to lake ratio.

## **Song Lake**

788 acre watershed,  
105 acre lake,  
8:1 watershed to lake ratio.

## **Tully Lake**

6,476 acre watershed,  
226 acre lake,  
29:1 watershed to lake ratio.

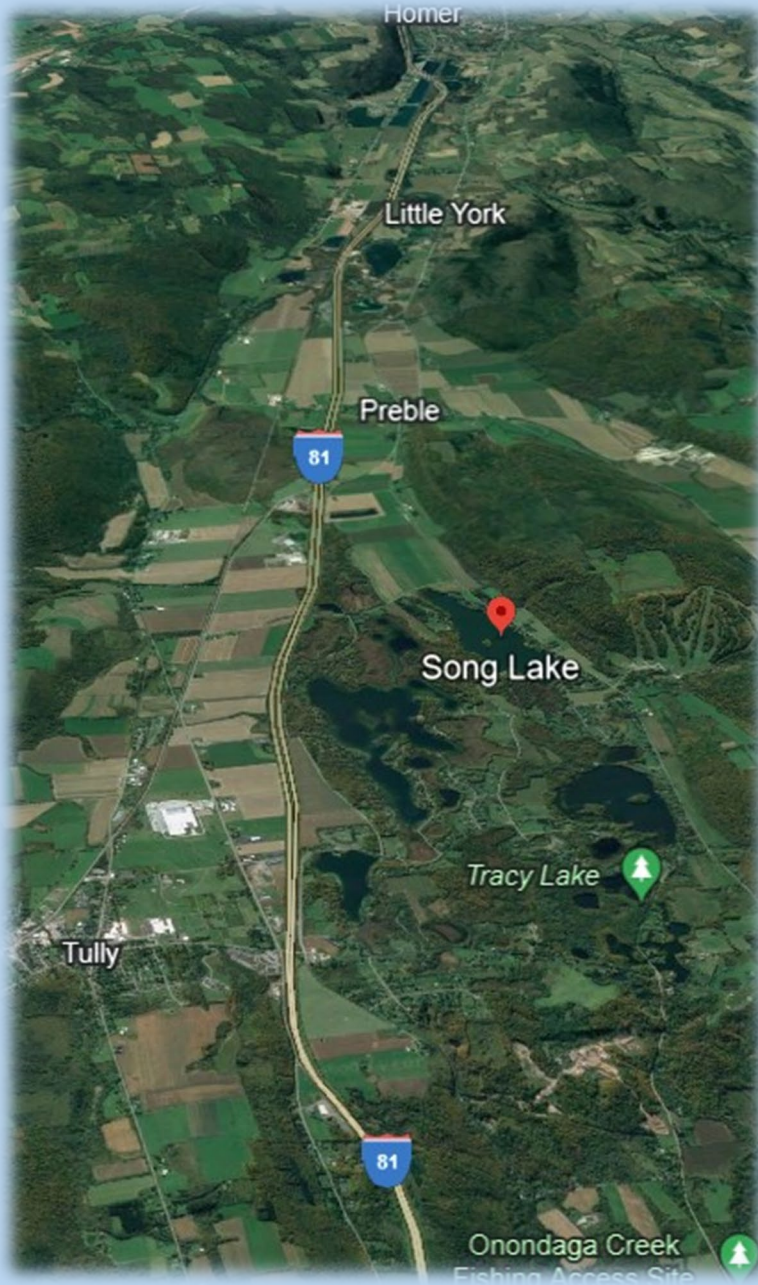
## **Tully Green Lake:**

Watershed information unknown  
35 acre lake,

Other Kettle hole Ponds:

Tracy Lake, Gatehouse Pond, Unnamed north ponds

# Current Communities



Rural Municipalities - Tully, Preble, Little York, Homer  
Proximity to Syracuse – north, Cortland – south,  
Finger Lakes connections – west  
Easy access N/S I 81  
– ON/OFF ramps – Tully, Preble, Homer  
Large and small-scale agriculture,  
Suburban homes, Tourism

# Communities of the Past

Painting and words  
by

**Eli Thomas,**

**Wolf Clan,**

**Onondaga Nation**

“Tully, NY located south of Syracuse and the Onondaga Nation Territory where I grew up with oral traditions.

Tully is the first place for forgiveness with wampum. We are earth and sky – everything is related and connected, nothing stands alone.”



# Communities of the Past

## Direct Impacts on our Lakes

1850's

- diversions for factories and mills

1880's to 1960's

- diversions and alterations for salt-brine mining

The Salt Industry, Tully Farms, N. Y.



1936



# Shared Concerns

- A growing number of aquatic invasive species,
- Climate changes - warming waters and intense storms
- Overabundant growth of plants and/or algae
- The proliferation of Cyano-HAB blooms
- Storm runoff from over- development (keyholing) and agriculture
  - Education about and practical implementation of “Best Management Practices,”
- Water quality issues – Depleted dissolved oxygen, nutrient and other chemical pollution
  - Development of undesirable infrastructure, such as gas pipelines or propane storage facilities.



Variable Leaf Milfoil on Little York Lake, 2015



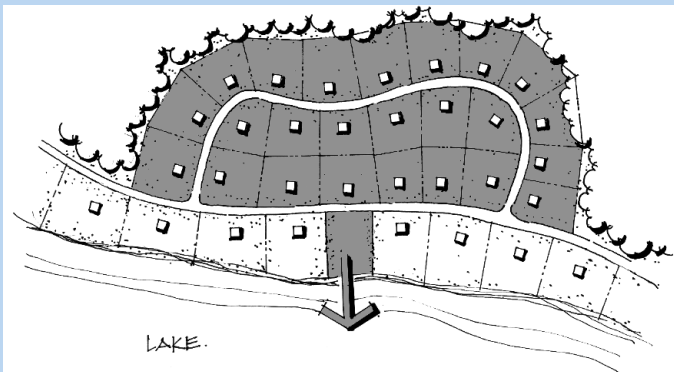
Culvert Diversion – Song Lake



Cyanobacterial bloom Song Lake, Sept. 2009



Zebra Mussel – Song Lake, 2018



Keyhole Development  
- Diet for a Small Lake



Flooding on Tully Lake, 2021

# Projects — AIS and watershed management

Cortland County – STOP the Invasion – lake stewards and elementary school education.

Tree Planting – Upper Susquehanna Coalition – Tree giveaways.

Riparian Buffer Planting with Onondaga County Soil & Water.

Tree Planting along tributary connecting Tully Sewer outflow to Tully Lake – 600 trees.

Beneficiary of \$50,000.00 National Fish & Wildlife, Chesapeake Bay Technical Capacity Grant – Syracuse University Environmental Finance Center

Gift equaling \$10,000.00 for Watershed Management Plans for Crooked Lake, Song Lake and Tully Lake.



Camp Owahta Cortland County 6<sup>th</sup> graders



Riparian Planting at Tully Lake



Lectures, Walking Field Trips, Panel Discussions and more.

# Kettle Lakes Speakers Series

Webinars

Topics, To Name a Few:  
Aquatic and Terrestrial Invasive Species  
Native Plants and Planting  
Agriculture and Storm Water  
Septic Systems  
Municipal Approaches to Lakes  
Hydrogeology of the Kettle Lakes  
Indigenous Ecological Knowledge  
Birds  
Trees  
Entomology  
Ticks and Tick-Borne Diseases  
Limnology  
Fisheries and Fish Ecology  
Angling in the Kettle Lakes  
Anthropogenic influences on Our Lakes  
Biomimicry  
Climate Change  
Harmful Algal Blooms



The following experts have presented in the past:

- **Dr. Gregory Boyer**, Chair of the Environmental Chemistry Department at SUNY-ESF and director of the Great Lakes Research Consortium on toxic algae

- **Dr. Donald Leopold**, professor of conservation biology and forest ecology at (SUNY-ESF). His work is known throughout the country. Dr. Leopold took us on a nature walk at LYL.

- **Andrew Brainard**, a SUNY-ESF Doctoral student sponsored, in part by C-OFOKLA, presented the preliminary findings from his research on Song Lake, Crooked Lake, Tully Lake, Little York Lake, and Gatehouse Pond

- **Justin Gansowski** – Wildlife Biologist, USDA – APHs on Feral Swine in Cortland and Onondaga Counties

- **Professor Tony Ingraffea** – Cornell University is the Dwight C. Baum Prof. of Engineering & Weiss Presidential Teaching Fellow with several awards for his 25 years of work in research and development, specializing in hydraulic fracture simulation and pipeline safety.

- **Scott Kishbaugh**– Director of the New York Department of Environmental Conservation Citizens Statewide Lake Assessment Program (CSLAP) since 1985. He currently serves as the Bureau Chief of the Lakes Monitoring and Assessment Section of the Bureau of Water Assessment Management.

- **Kevin Stack** – ecological builder, building scientist, and ecological literacy educator. Kevin first described the innovation of Ecological Performance Standards (EPS), as part of the uniquely adaptable Building in Nature's Image™ system. Kevin teaches at SUNY ESF and OCC, and lectures, internationally, as a Biomimicry Speaker's Guild member.

- **Mark Whitmore** – Cornell University professor and a leading expert in Forest Ecology, Biological Control of Forest Insect Pests, Forest Entomology and Non-Native Invasive Forest Pests.

- **Dr. Bill Kappel**, USGS on the hydrogeology of the kettle lakes

- **Dr. Sandra Steingraber and Professor Tony Ingraffea** – *Transforming New York State to a Fossil Fuel Free Future: Why and How*

- **David O. Brown, Maria Rizzo, Robin Kimmerer and Karen Smith** – *Art and Ecology: Artists and Their Passions*

- **Jim Cunningham**, President of the New York State Federation of Lake Associations and the Madison Federation of Lake Associations as well as founder

# Art & Ecology Artists & Their Passions

Homer Center 4 Arts and Tully Arts Center

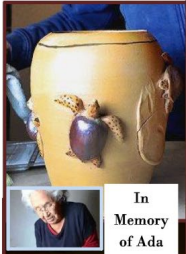
## Art and Ecology: Artists and Their Passions II

Painting, Textiles, Ceramics, Songs, and Prose

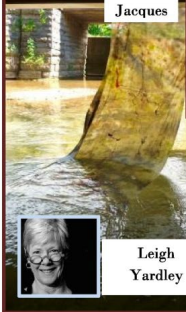
Homer Center for the Arts  
Sunday, October 23<sup>rd</sup>  
3:00 to 6:30PM

Five Extraordinary Artists in one Beautiful Location

In Memory of Ada Jacques, Presentation by Frieda Jacques  
Colleen Kattau, Renowned singer, guitarist, composer and activist.  
Kevin Mayer, Professional landscape artist, teacher and ecologist.  
Sandra Steingraber, Poet, author, biologist and environmentalist.  
Leigh Yardley, Multimedia artist, with "a sense of place."



In Memory of Ada Jacques

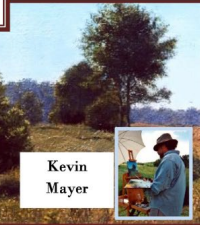


Leigh Yardley

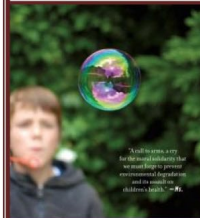


Colleen Kattau

SO MUCH GOING ON



Kevin Mayer



RAISING ELIJAH

Sandra Steingraber

## Art and Ecology: Artists and Their Passions III

Painting, Photography, Ceramics & Fine Art

Homer Center for the Arts  
Sunday, October 29<sup>th</sup>  
3:00 to 6:30PM

Four Extraordinary Artists in one Beautiful Location

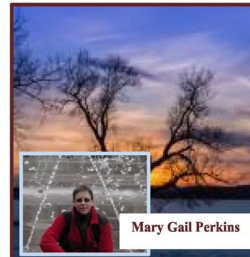
Eli Thomas, artists and wisdom keeper of the Onondaga Nation  
Mary Gail Perkins, landscape and nature photography  
Jenn Gandee, ceramics  
Mary Geihl, multimedia fine art



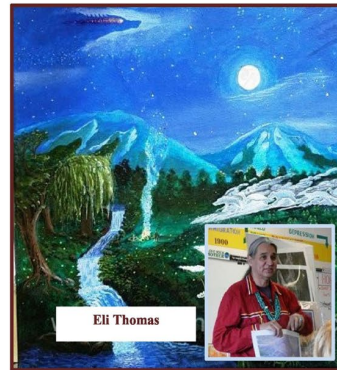
Jenn Gandee



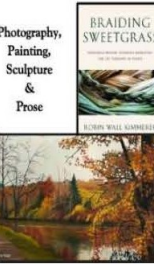
Mary Geihl



Mary Gail Perkins



Eli Thomas



Photography, Painting, Sculpture & Prose



David O. Brown is a worldwide producer, videographer, photographer and lecturer, science writer, sci-fi biologist at Peoples and for natural teacher with the water c waters of t

Talk with the artists and view  
Hear their prese

Thi



Laura Leigh Lanchantin



Tom Huff



Joan DeSimone

## Art and Ecology: Artists and Their Passions IV

Paintings from Mineral and Stone, Jewelry to Honor Nature, Indigenous Stone Carving

Tully ArtWorks Studio  
Sunday, October 14<sup>th</sup>  
1:00 to 4:00PM

Three Extraordinary Artists

Laura Leigh Lanchantin - Paints and Paintings from Stone and Earth  
Joanie DeSimone - Metalsmithing/Jewelry to Honor Nature  
Tom Huff - Indigenous Stone Carving  
Join us for this unique studio exhibit, conversations with the artists and refreshments at the newly renovated Tully ArtWorks Studio, 5 Elm Street, Tully, NY

All presentations are open to the public.  
Donations of \$2 to \$5 are suggested.



Visit [www.cofokla.org](http://www.cofokla.org) or email [contact@cofokla.org](mailto:contact@cofokla.org)

Painting, textile art, photography, ceramics, prose, music, stove carving, metallurgy.

All presentations are open to the public.  
Donations of \$2 to \$5 are suggested.



Visit [www.cofokla.org](http://www.cofokla.org) or email [contact@cofokla.org](mailto:contact@cofokla.org)

Erica Bailey, Mixed Media, Nature and Wildlife Artist



Liz Goldenberg,  
Silver Artist  
and Potter

Brandon Lazore,  
Haudenosaunee  
Painter



# Promotions



2009 Logo



2012 Logo



## Kettle Lakes:

Logo

Note Cards

Jewelry

Memberships

Photo Contests



Current Logo



This exquisite photo was taken by Tully Lake resident and professional photographer, Mark Druziak.

As eagles return to Central New York, they are frequently seen around our kettle lakes during open water season, hunting their favorite food, fish. It is heartening to witness the return of eagles to our region, however, they remain a federally protected species. The New York State Department of Environmental Conservation recommends following "Eagle Etiquette." Don't approach eagles closer than a quarter mile and avoid roosting areas. Refrain from loud noises.

Keep pets away while viewing. Use binoculars or spotting scopes instead of trying to get closer. Don't do anything to try to make the bird fly. Respect private property and avoid restricted areas. We can all appreciate and protect these magnificent birds.

Tully Lake is one of our C-OFOKLA Kettle Lakes.

**Cortland-Onondaga Federation of Kettle Lake Assoc., Inc.**

[www.COFOKLA.org](http://www.COFOKLA.org) & [www.facebook.com/cofokla](http://www.facebook.com/cofokla)

**A Couple of Birds Hanging Out in Assembly Park on Tully Lake!**

Photo ©2018 by Mark Druziak, used by permission, all rights reserved.

# Projects - Watershed Awareness



Road sign off I 81 in progress

**Webinars and Newsletters**  
Upper Susquehanna Coalition and  
Multiple Collaborators

20 June 2020  
Volume 1 Issue 1

# Kettle Lakes Watershed News

A CONSERVATION COLLABORATIVE PUBLICATION



C-OFOKLA  
CORTLAND-ONONDAGA  
FEDERATION OF  
KETTLE LAKE  
ASSOCIATIONS



Cortland SWCD



Environmental  
Finance  
Center  
Syracuse University



Onondaga SWCD



TULLY LAKE  
Property Owners Association



UPPER SUSQUEHANNA  
COALITION

Conservation partners from throughout the region developed this newsletter together to share information and strategies for protecting water quality within the Kettle Lakes watershed and beyond. We hope that by sharing information with and learning from all community members who respect and enjoy streams, river, creeks, ponds, and lakes, we can address water quality issues now and preserve water quality for the future. Within this newsletter, you will find information about current challenges and solutions to water quality issues within the Kettle Lakes Watershed, as well as find information on what watershed residents and conservation partners are doing to address these issues and how you can get involved.

## Newsletter distributed over two counties

### Four Kettle Lakes - Working Together



### Thanks to all our Presenters



**Tully Lake Presenters**  
February 2, 2021

Colleen Zawadzki – Tully Lake Property Owners Association

Teresa Link – Onondaga Soil and Water Conservation District

Tarki L. Heath – Cortland - Onondaga Federation of Kettle Lake Associations



**Crooked Lake Presenters**  
March 2, 2021

Seth Aldrich – Crooked Lake Property Owners Association

Beth Grella - Crooked Lake Property Owners Association

Tom Cappa and Tarki L. Heath – COFOKLA



**Song Lake Presenters**  
April 6, 2021

Jay Currie – Town of Preble Historian  
Marjorie Grillo and Tarki L. Heath – Song Lake Property Owners Association and COFOKLA

Joe Heath – Song Lake Resident

Colleen Zawadzki – Tully Lake Property Owners Association and COFOKLA



**Little York Lake Presenters**  
May 4, 2021

Kim Buttino– Little York Lake Preservation Society and COFOKLA

Gary Lawrence – Little York Lake Preservation Society

Don Fisher – Little York Lake Preservation Society

# Projects - Flood Awareness

## My Coast

[mycoast.org/ny](https://mycoast.org/ny)

Participation – Tools to track flooding and document storm damage.

*NYS Water Resources Institute (Cornell) and Sea Grant NY*



Tully Lake, Hoffman Road, 2021

## Kettle Lakes Storm Response Plan

To provide a rapid and coordinated response to large-scale storm events

To ensure the health and safety of residents of our Kettle Lakes community

To preserve and protect the water quality of our Kettle Lakes

Kettle Lakes Storm Response Website <https://www.kettlelakesstormresponse.org>

Funding for website development through The Freshwater Futures

&

Kettle Lakes Association Facebook Page <https://www.kettlelakesassociation.org/>

Our Warming Waters

Both at the **Tully High School Auditorium,**

5550 State Route 80, Tully, NY

Effects of Warming Waters on  
**Harmful and Toxic  
Algae**

Monday - **May 23<sup>rd</sup>**

7:00 – 9:00 PM

Dr. Gregory Boyer\*



Pictures of Lake Erie and other NYS waterways, covered with green algae have been prominent in the media. How bad is the algae and what can we expect as our waters warm? Find out from the internationally recognized, leading expert on this issue. Whether you are concerned about recreational swimming, fishing and aesthetics, or the impacts to our drinking water, this presentation will be enlightening and inform.

\*Chair of the Environmental Chemistry Department at SUNY- ESF and Director of the Great Lakes Research Consortium.

Effects of Warming Waters on

**Farms and  
Farming**

Monday - **June 20<sup>th</sup>**

7:00 – 9:00 PM

A Panel Discussion

**Amanda Barber - Cortland County Soil & Water**

**Mike McMahon – EZ Acres Farm**

**And Others**

Stewardship of land and water resources are necessary to protect farms for future generations. Join our distinguished panel as they outline current best management practices that support environmental and economically sustainable agriculture. Learn more about the progress that has been made and the challenges that farmers face in a rapidly changing environment.

Keep in touch with us on Facebook or sign up for online notices.

Save These Dates:

**Annual Water Festival & Picnic**

at the Little York Lake Pavilion in September

**Art and Ecology II: Artists and Their Passions**

at the Homer Center for the Arts, from 3 to 6 PM with gallery art showing from Oct 23<sup>rd</sup> to the 28<sup>th</sup>

To find out more go to:

[www.cofokla.org](http://www.cofokla.org), or email [cofokla@gmail.com](mailto:cofokla@gmail.com)



C-OFOKLA members are: Crooked Lake Property Owners Association, Little York Lake Property Owners Association, Song Lake Property Owners Association and Tully Lake Homeowners Association Corporate Partners: CH2M and AXI Digital

Watershed Partner: The Central New York Land Trust

# Getting the Word Out

Posters – Town halls, post offices, coffee shops, hardware stores, etc.

Website – [www.kettlelakesassociation.org](http://www.kettlelakesassociation.org)

Emails & Facebook Postings – COFOKLA (Kettle Lakes Association), Other Lake Associations, Partners, Personal

Flyers – Tabling at established events such as farmers markets, craft shows, etc.

Other Conferences

Free listings in local papers, digital news, radio, television, And community newsletters.



# 15 Years of Community Engagement



Vision:

**We are building a grassroots organization to work together to restore and preserve the Kettle Lakes and their watersheds.**

Goals: We Plan to

- ***create and conduct educational programs***
- ***create and promote individual membership***
- ***develop a plan for branding the region***
- ***develop more structured relationships with our partners to foster funding opportunities***
- ***energize our community to participate and be active stewards***
- ***strengthen our internal organization with extended leadership***



## Agencies and Institutions

- Cortland County Soil & Water Conservation District
- Onondaga County Soil & Water Conservation District
- Finger Lakes PRISM
- Town of Tully
- Town of Preble
- US Fish and Wildlife
- SUNY, College of Environment and Forestry
- Syracuse University
- Cornell - NYS Water Resources Institute
- NYS Department of Environmental Conservation

# Our Partners

## Other Groups and Individuals

- Tully Rotary
- Tully Arts Council
- Tully Action Group
- Tully United Community Church
- St. Charles Bay Cares
- The Cappa, Heath & Zawadzki Families
- AXI Digital

## NFPs and Other Organizations

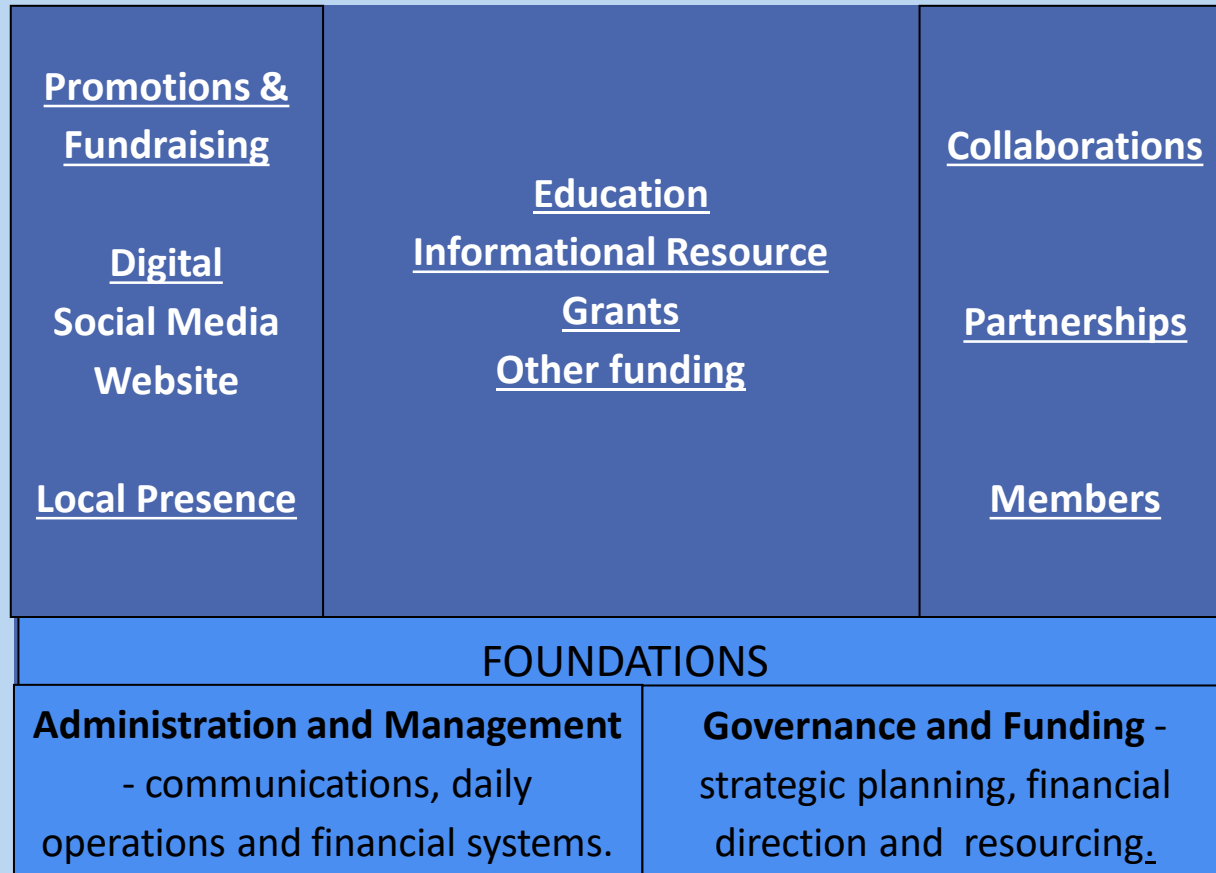
- Upper Susquehanna Coalition
- NYS Federation of Lake Associations
- Upstate Freshwater Institute
- BloomOptix (AI development)
- CNY Land Trust
- Onondaga Earth Corps
- Princeton Hydro Upper Susquehanna Conservation Alliance
- Freshwater Futures

# Our Organization

Our organization uses a multi-faceted approach to protecting our lakes. Without staffing, the board of directors remain the foundation and attend to all aspects, from governance and management to financial and administrative tasks.

## Challenges

Post COVID world  
Capacity building



## Core Board

President  
Vice President  
Treasurer  
Secretary

2 Representatives from each member lake.



# Summer - 2024

Continue Lake Steward Support for Cortland County  
Boat Launch at Song Lake  
Cortland County Water Festival  
Cortland County Conservation Field Days

AIS Education in Tully  
Angler's Garage Sale  
Farmers Markets and Craft Shows

Kettle Lake General Membership Meeting – June 20<sup>th</sup>  
Interest Survey results for 2025 planning

CNY Regional NYSFOLA Conference at Little York Lake

SUNY ESF Limnology Practicum Students

Kettle Lakes Mural Concept  
Monthly meetings  
Design with artist

Installation of road sign



**Anglers'  
Garage Sale Fundraiser**

**Saturday, June 8th, 9:00 AM to 2:00 PM**  
Tully United Community Church on Meetinghouse Road, Tully

**WE'RE FISHING FOR DONATIONS!**  
Reels, Rods, Rigs, Lures, Lines and Lots More!

**How will this work?**


**To donate:** Bring your clean donations to the Church Friday, June 7th between 4:00 and 6:00 PM or Saturday, June 8th between 8:00 and 9:00 AM

**To purchase:** Come to the Sale on Saturday, June 8th between 9:00 AM and 2:00 PM. Proceeds from your donations will go to support our Kettle Lake initiatives.

Please "Clean, Drain and Dry" any equipment brought to the sale

**IF YOU ARE INTERESTED IN MAKING A DONATION  
CALL TOM AT 315-696-6668**

[FIND OUT MORE ABOUT US BY CLICKING HERE](#)



Consider a tax deductible donation to C-OFOKLA NYS Charities Bureau Registration Number, 44-89-36  
Our Current Watershed Partners are AXI Digital, Tom and Mary Cappa, Tarki and Joe Heath, Tully Green Lake Residents & Saint Charles Bay Carew  
Partnered with NYSFOLA, Finger Lakes PRISM & Central New York Land Trust



# Projects - Watershed Awareness

## Submerge NY

A state-wide pilot flood-risk awareness and outreach effort to assist local communities in communicating flood-risk creatively.  
*NYS Water Resources Institute (Cornell) and Sea Grant NY*

## Kettle Lakes Mural Concept A work in progress

Create a unique piece of art that will reflect the Kettle Lakes region in CNY focusing on the watersheds that connect us.  
Stormwater – Heritage  
The art will be digitized so that it can be used in multiple ways from murals to prints.

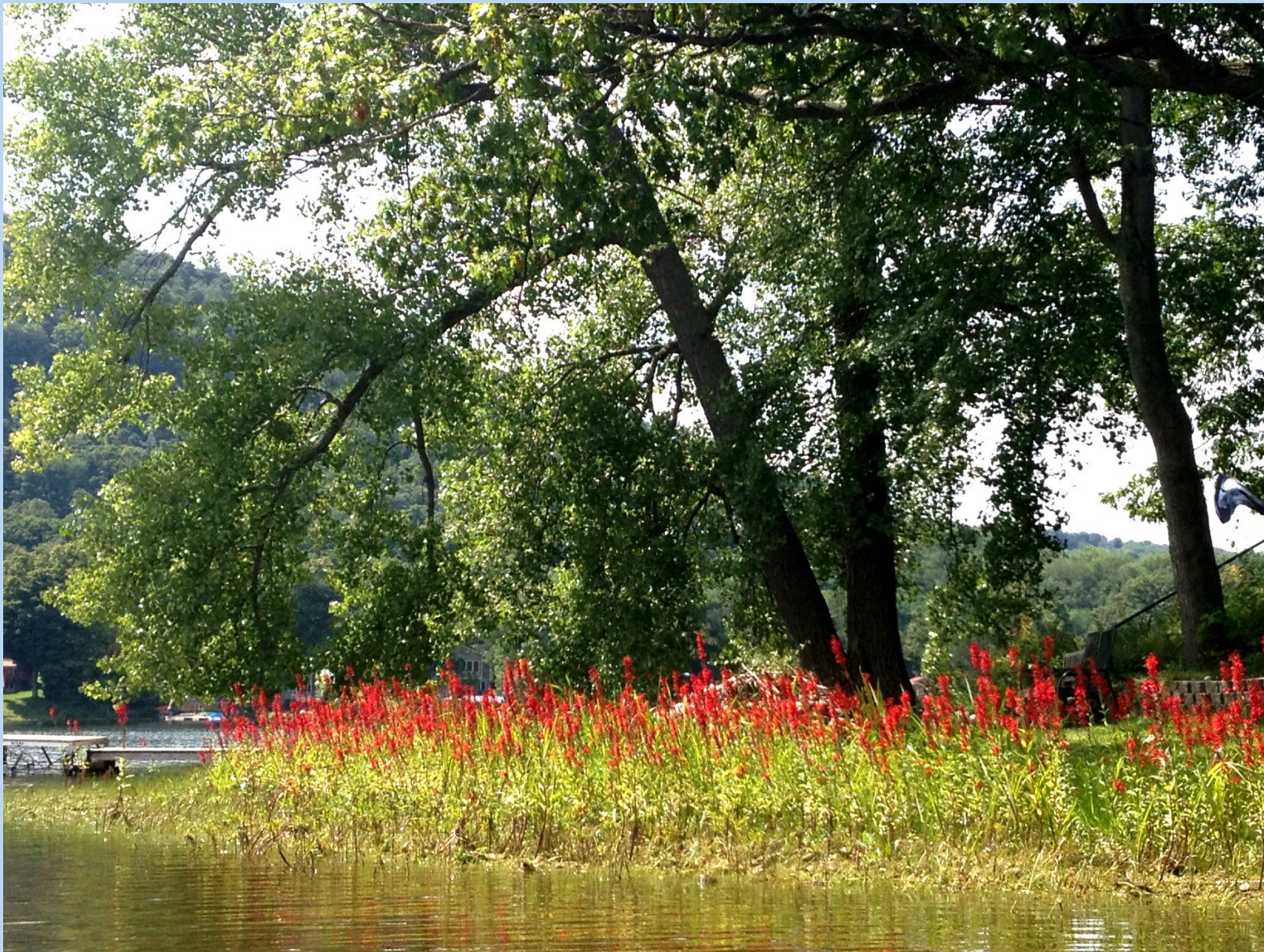
Research assistance from Cornell University Students



Syracuse University – Quadrangle  
Haudenosaunee influences



Brandon Lazore – muralist/painter  
Onondaga, Snipe Clan



[www.kettlelakesassociation.org](http://www.kettlelakesassociation.org)  
[cofokla@gmail.com](mailto:cofokla@gmail.com)

Pictures not otherwise labeled  
are from the Kettle Lake Association  
Archives.