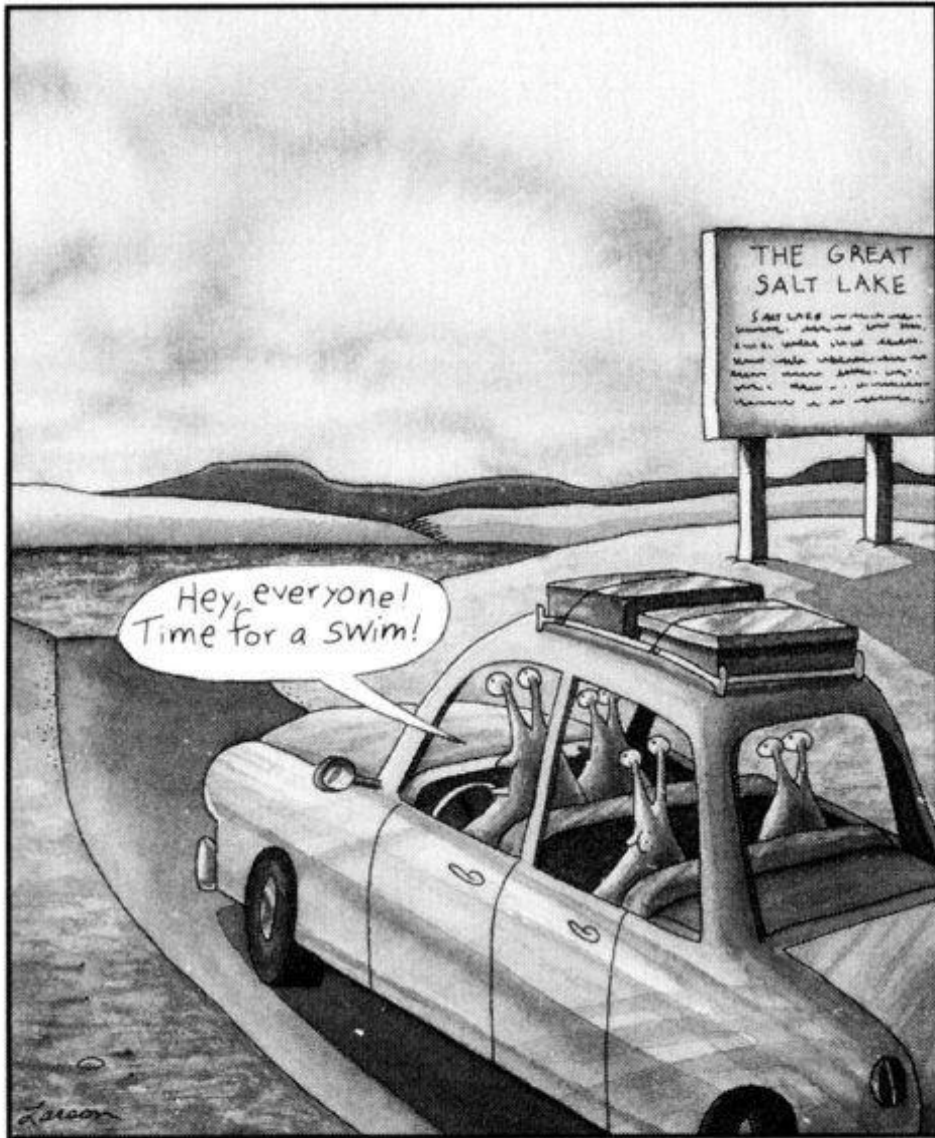


# WELCOME TO NY LAKE TRIVIA 2025



Slug vacation disasters

Gary Larson – "The Far Side"

*Where an in-depth knowledge of limnology is not required and may be only somewhat useful. However, everyone should learn something today!*

# Meet Our Contestants



Dr. Fred Lubnow, Senior Technical Director of Ecological Services, Princeton Hydro, LLC (Photo shamelessly pilfered from the archives of Princeton Hydro's website)



Laurel Wolfe, NYSFOLA BOD and Association Manager, APO Sleepy Hollow Lake



Chris Mikolajczyk, Senior Project Manager-Aquatics, Princeton Hydro, LLC

# Question 1:

## What lake am I?

This lake was originally called “Andia-ta-roc-te” (*the lake that the mountains close in*) by the Mohawk people.

In 1646, French Jesuit missionary Isaac Jogues named it “Lac du Saint Sacrement” – supposedly because its waters were as clear as holy water.

We know the lake by the name given to it in 1755 by General William Johnson.

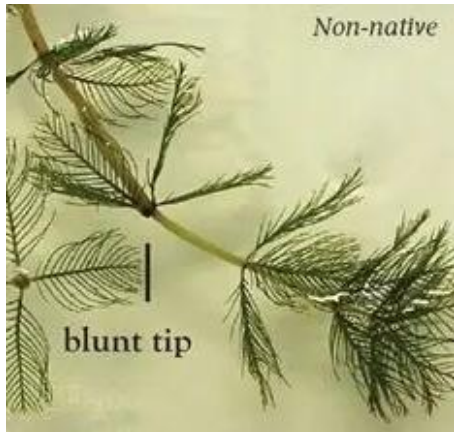




Answer: Lake George







Chinese Mystery Snail



*Corbicula fluminea*, open, showing both valves.  
Photo Jacksonville Shell Club @ [www.jaxshells.org](http://www.jaxshells.org)

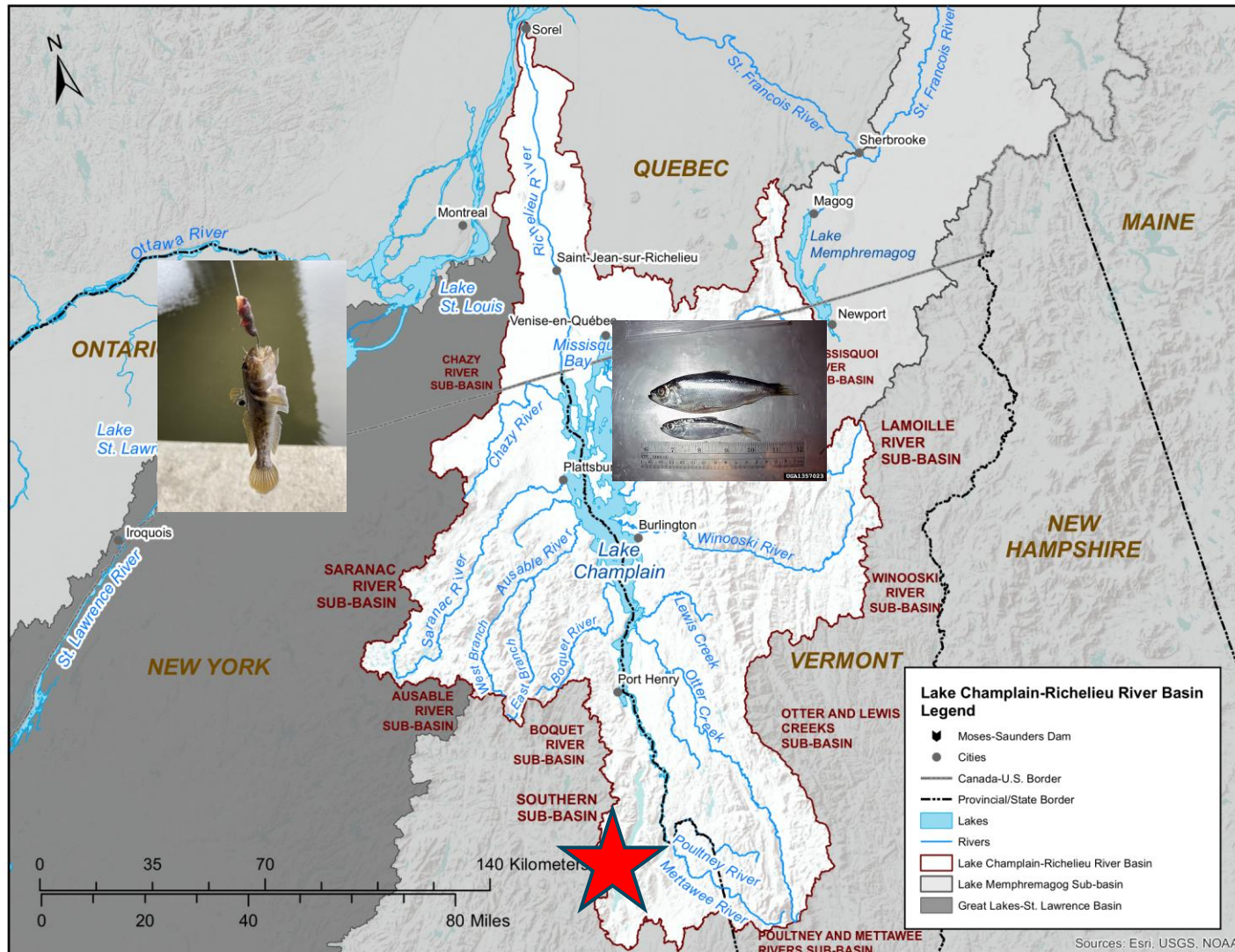
## Question 2: Which two of the following AIS have not (yet) been found in Lake George?

- Alewife
- Asian clam (photo: [www.nyis.info/species/asian-clam](http://www.nyis.info/species/asian-clam))
- Chinese mystery snail (photo: [www.lhprism.org/Chinese-mystery-snail-bellamya-chinensis/](http://www.lhprism.org/Chinese-mystery-snail-bellamya-chinensis/))
- Curly leaf pondweed (photo: [www.adkwatershed.org/curlyleaf-pondweed](http://www.adkwatershed.org/curlyleaf-pondweed))
- Eurasian water milfoil (photo – [www.lakegeorgeassociation.org](http://www.lakegeorgeassociation.org))
- Round goby
- Spiny water flea
- White Perch
- Zebra mussel

## Question 2:

# Answer: Round Goby and Alewife

So far, neither of these invasive fish have been found in Lake George. Alewives are present in Lake Champlain, and the round goby is present in the St. Lawrence River. Both species are a threat to invade Lake George.





## Question 3: Pinky Finger?

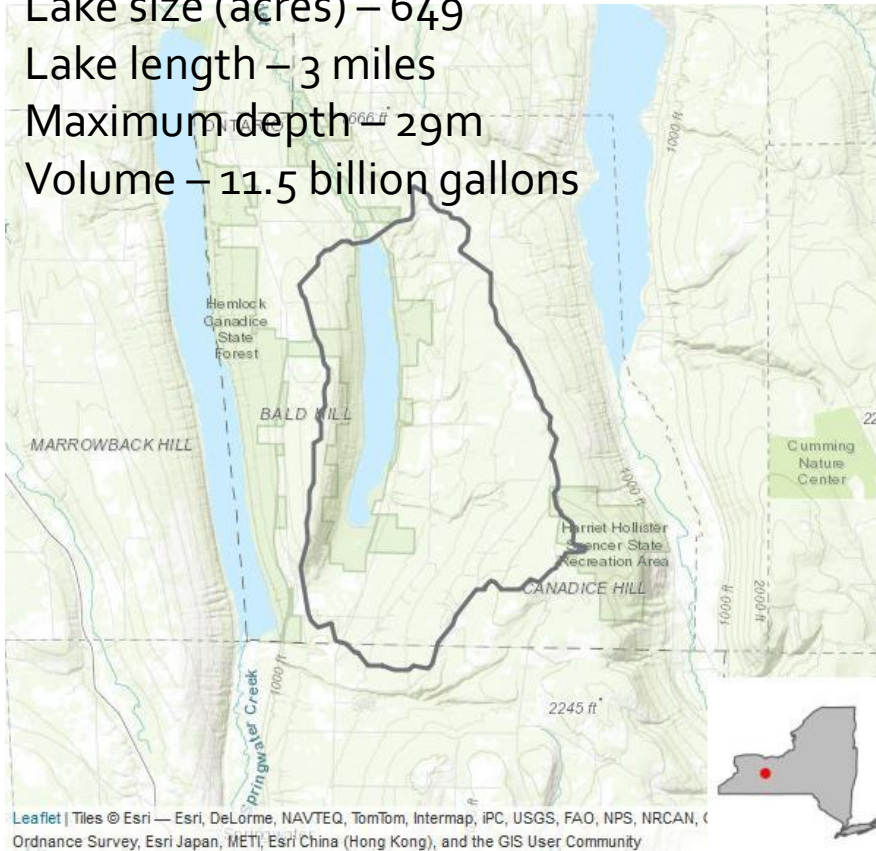
Of the 11 Finger Lakes, which one is the smallest?



Hint: This lake has sampled as part of the Citizens Statewide Lake Assessment Program since 2017.

# Answer: Canadice Lake

Lake size (acres) – 649  
Lake length – 3 miles  
Maximum depth – 29m  
Volume – 11.5 billion gallons



Canadice Lake has been a water reservoir for the City of Rochester since 1876. Because of this, there is no development permitted along the shoreline and certain activities on the lake are either banned (such as swimming) or restricted.

At 1196 ft above sea level, Canadice is also the highest of the Finger Lakes. No pumps are needed to transport the water into the city.

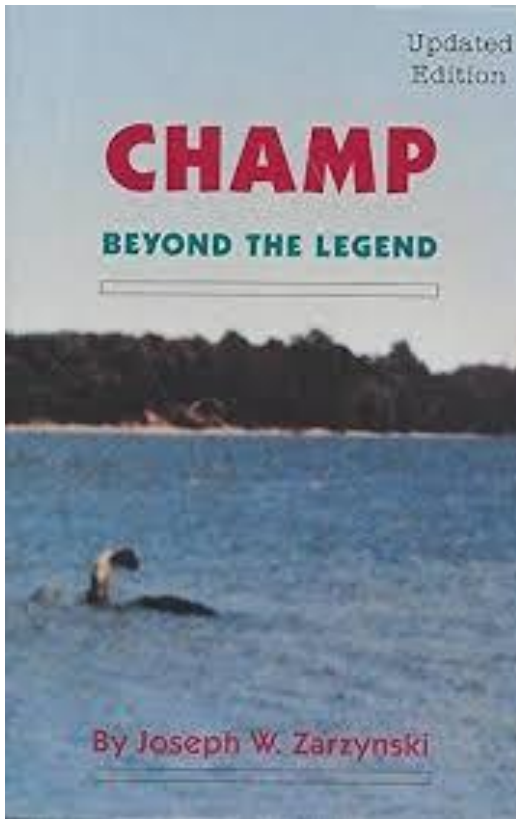
Boats are limited to 17 feet in length and can have a maximum of a 10 horsepower engine, which makes Canadice Lake an ideal spot for canoeing, kayaking, and fishing.

[https://extapps.dec.ny.gov/data/IF/CSLAP/2023\\_Lake\\_Report\\_Canadice%20Lake\\_0402CAN0043.html](https://extapps.dec.ny.gov/data/IF/CSLAP/2023_Lake_Report_Canadice%20Lake_0402CAN0043.html)



## Question 4: Cryptozoology in NY

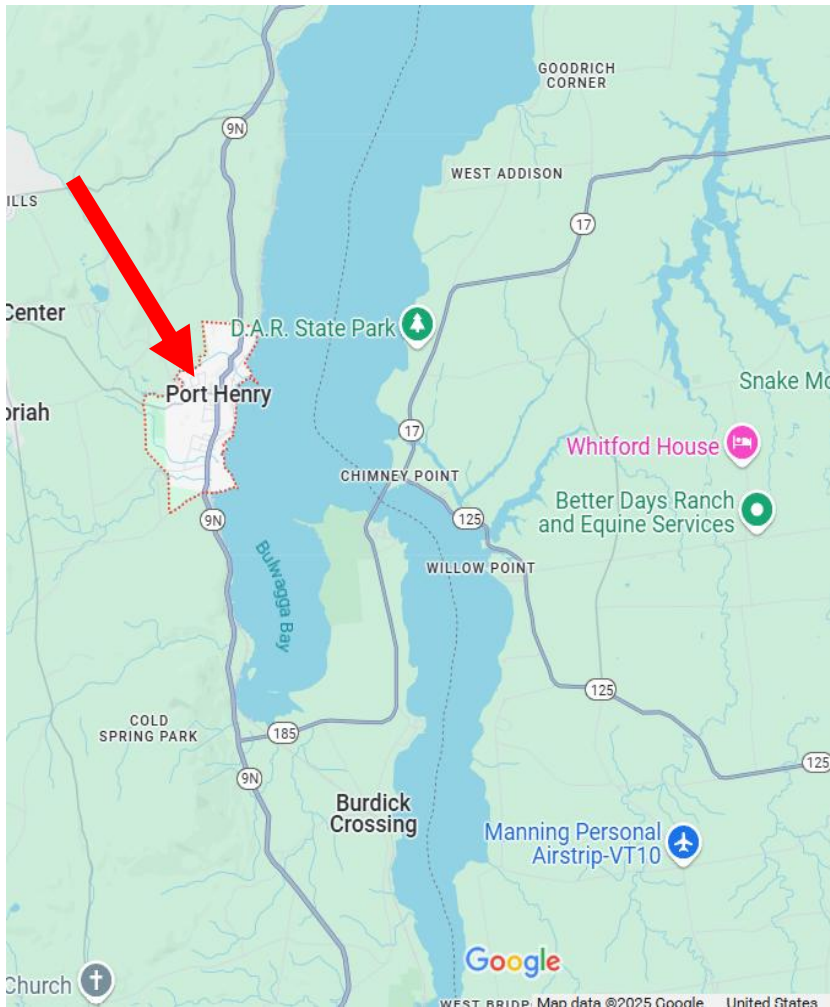
What New York village calls itself the “Home of Champ”  
(aka the Lake Champlain monster)?



Note: The author of “Champ Beyond the Legend”, Joseph Zarzynski, was the banquet speaker at the 2024 NYSFOLA conference.



# Answer: Port Henry, NY



Port Henry is located in Essex County on Lake Champlain's Bulwagga Bay.

The town celebrates "Champ Day: The Lake Champlain Monster Festival" on the first Saturday in August.







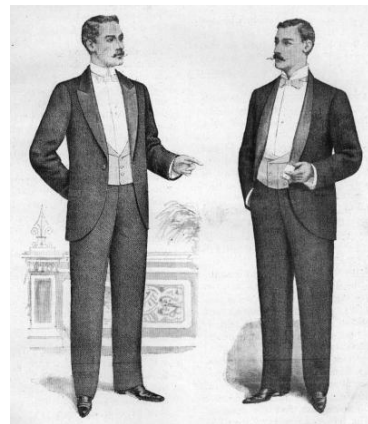
## Question 5: Puttin' On the Ritz

This NY lake community was originally founded by tobacco heir Pierre Lorillard IV in 1885 as a private hunting and fishing retreat for his Gilded Age friends.

There are three lakes in the community. One of them derives its name from an indigenous word in the Munsee language and is said to mean 'crooked water'.

**What men's formal evening wear also takes its name from this Lenape word, the locality itself, and the lake? 2 PT BONUS: Name the other 2 lakes**

# Answer: The tuxedo



Pierre Lorillard's family were wealthy tobacco magnates who owned country property in Tuxedo Park, just outside New York City. At a formal ball held at the Tuxedo Club in October 1886, the young Lorillard wore a new style of formal wear for men that he designed himself when men only wore Tailcoats with white bowties. Lorillard had the tails removed from his Tailcoat and wore the Satin Lapel Dinner Jacket to the First Autumn Ball. He named his tailless black jacket the tuxedo after Tuxedo Park. The tuxedo caught on and became fashionable as formal wear for men.





# And the other two lakes are...

Wee Wah Lake

Little Wee Wah Lake

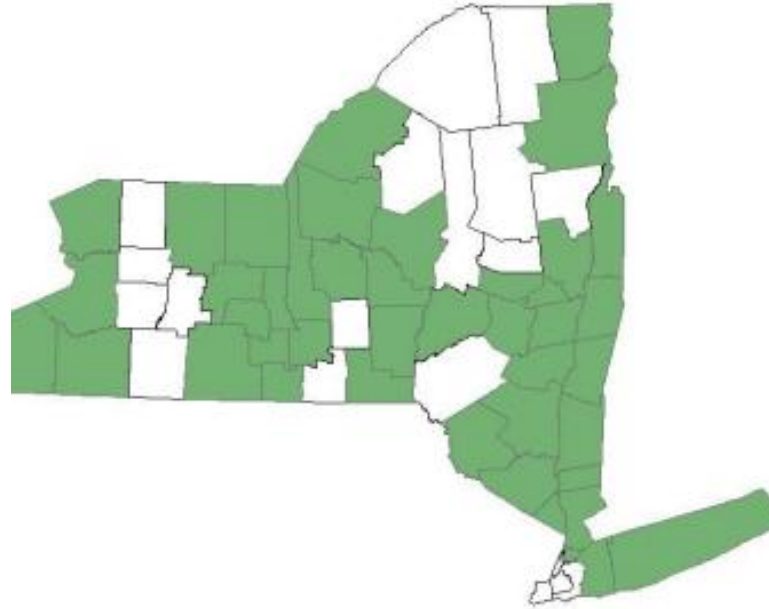
You can read the CSLAP reports for all 3 lakes on the CSLAP Dashboard at:

[https://experience.arcgis.com/experience/c32878596aoa47deb5f97ea5e07ec9c5/page/Dashboard#data\\_s=id%3AdataSource\\_1-1886db6c5a2-layer-4%3A173](https://experience.arcgis.com/experience/c32878596aoa47deb5f97ea5e07ec9c5/page/Dashboard#data_s=id%3AdataSource_1-1886db6c5a2-layer-4%3A173)



**CLEAN  
DRAIN  
DRY**

Prevent the Spread of Aquatic  
Invasive Species



## QUESTION 6: AIS

**WHAT AQUATIC INVASIVE SPECIES WAS FIRST DISCOVERED IN A NEW YORK LAKE IN 1884? (IT HAS SINCE SPREAD ACROSS THE STATE TO AT LEAST 43 COUNTIES.)**

---

**BONUS - 2 POINTS:  
NAME THE NY LAKE IN WHICH  
IT WAS FIRST FOUND.**



# Answer: Water Chestnut

Water chestnut is an aquatic invasive plant that is native to Eurasia and Africa.

Introduced in the United States in the mid-1800s as an ornamental plant, water chestnut was soon found growing in **Collins Lake** near Scotia, NY. Water chestnut colonizes areas of freshwater lakes, ponds and slow moving streams and rivers where it negatively impacts aquatic ecosystems and water recreation.



## Question 7: Who knew?

Before her death last year, celebrity sex therapist Dr. Ruth Westheimer owned a house on what NY lake?



<https://www.realtor.com/news/celebrity-real-estate/dr-ruth-westheimer-lake-house-rent-death/ate/dr-ruth-westheimer-lake-house-rent-death/NY.com>



# Answer: Lake Oscawana in Putnam County

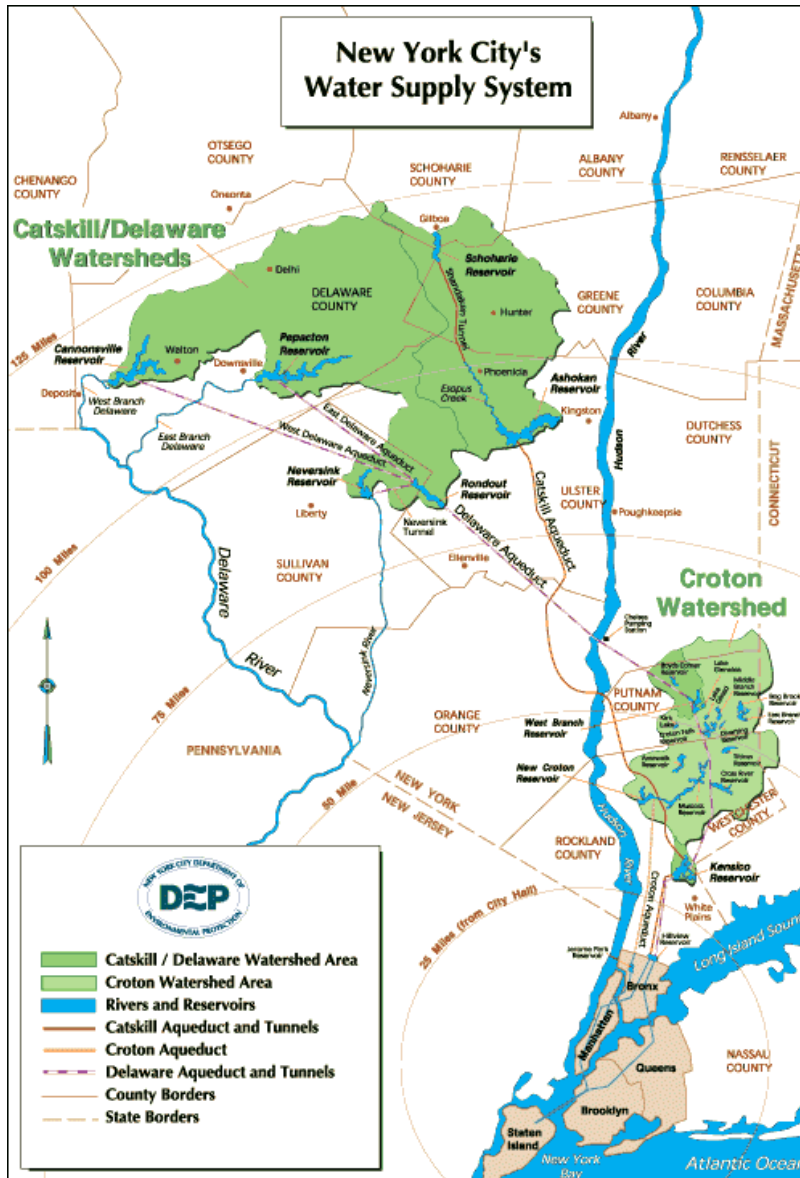
The house went on the rental market in September 2024, shortly after the Dr. Westheimer's death, with a rental price of \$6500/month.

Renters beware! Water quality is in significant decline in Lake Oscawana. The data show that in 2023, most metrics used to define the lake's condition showed serious deterioration. Evidence from the data suggests that the decline started in 2021 and intensified in 2022

(Northeast Aquatic Research, 2024)

<https://www.putnamvalley.gov/wp-content/uploads/2024/04/Oscawana-2023-Lake-Management-Report.pdf>





## Question 8:

What is the storage capacity of the NYC Reservoir System?

- 55 billion gallons
- 250 billion gallons
- 550 billion gallons



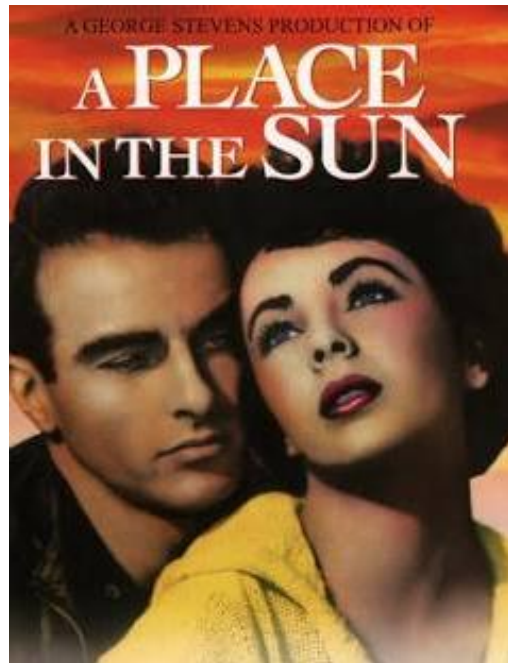
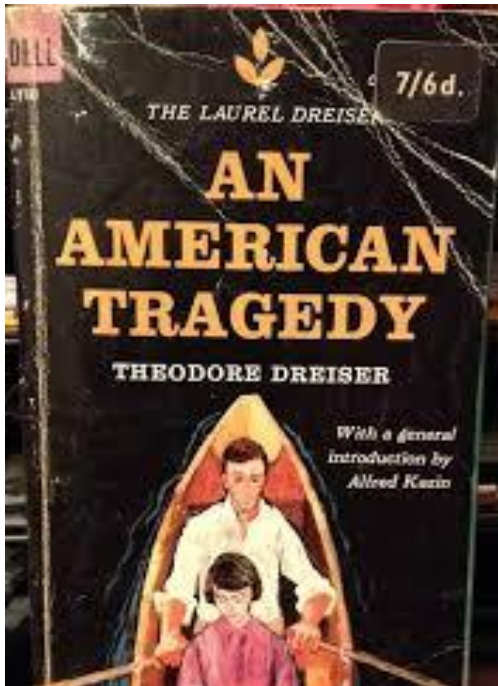


Answer:

- **550 billion gallons**

Each day, more than 1.1 billion gallons of fresh, clean water is delivered from large upstate reservoirs – some more than 125 miles from the City – to the taps of nine million customers throughout New York state.

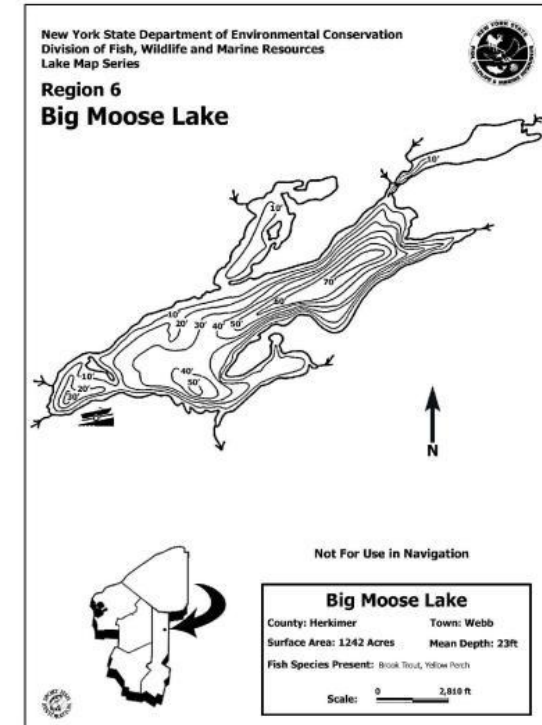
<https://www.nyc.gov/html/nycwater/html/drinking/reservoir.shtml>



QUESTION 9: THE BOOK "AN AMERICAN TRAGEDY" AND THE FILM "A PLACE IN THE SUN" ARE BOTH BASED ON THE 1906 MURDER OF GRACE MAE BENNETT BY HER BOYFRIEND CHESTER GILLETTE.

ON WHAT NY LAKE DID THE MURDER TAKE PLACE?





# ANSWER: BIG MOOSE LAKE

# QUESTION 10: WHERE IN THE WORLD?

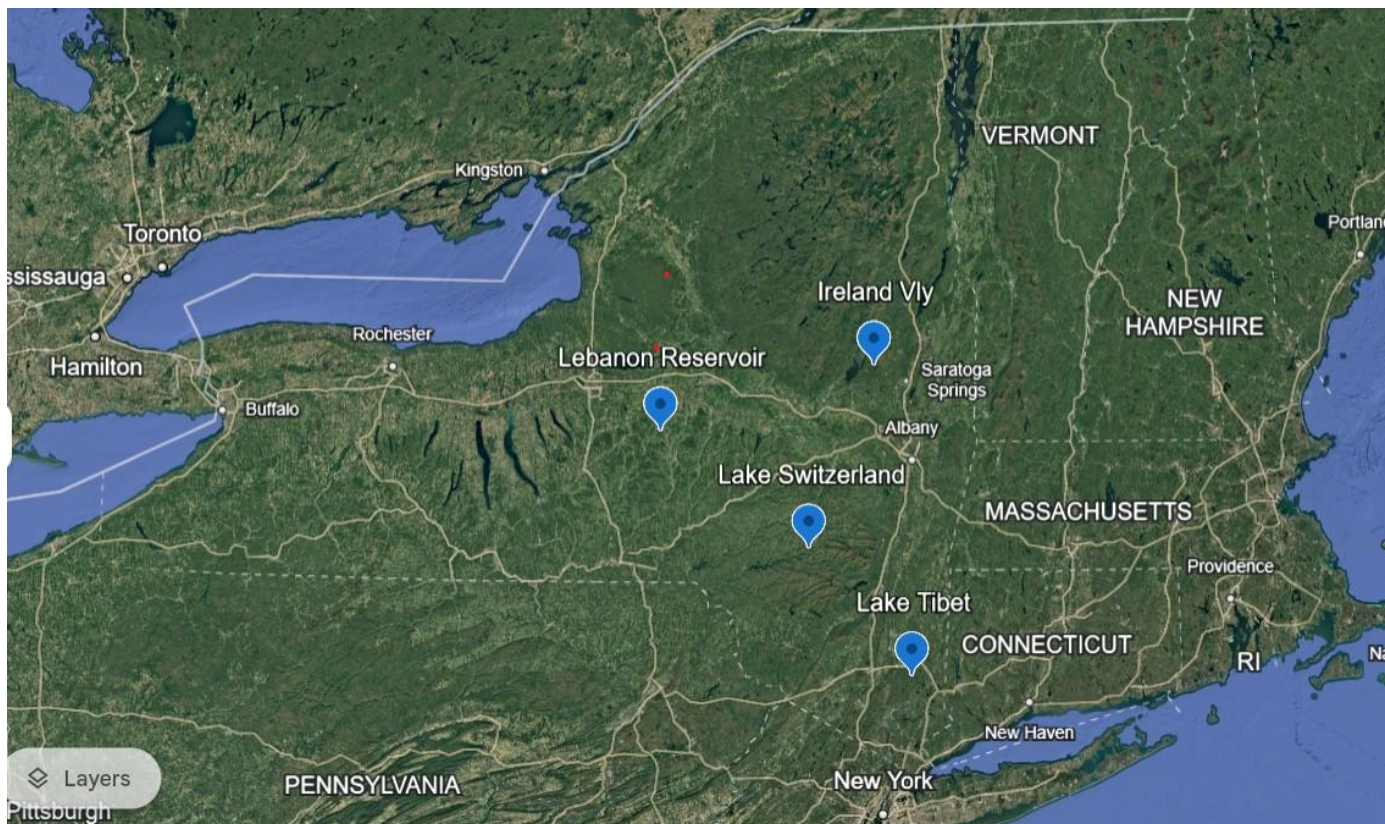
Ireland, Italy, Lebanon, Switzerland, Tibet...Which country does NOT have a NY lake named after it?

(According to "Characteristics of New York State Lakes Gazetteer of Lakes, Ponds and Reservoirs, Third Edition, October 1987, NYS DEC)



<https://gisgeography.com/high-resolution-world-map/>





This map includes data from Google, Landsat/Copernicus, Data SIO, NOAA, U.S. Navy, NGA, GEBCO NOAA

## QUESTION 10: WHERE IN THE WORLD?

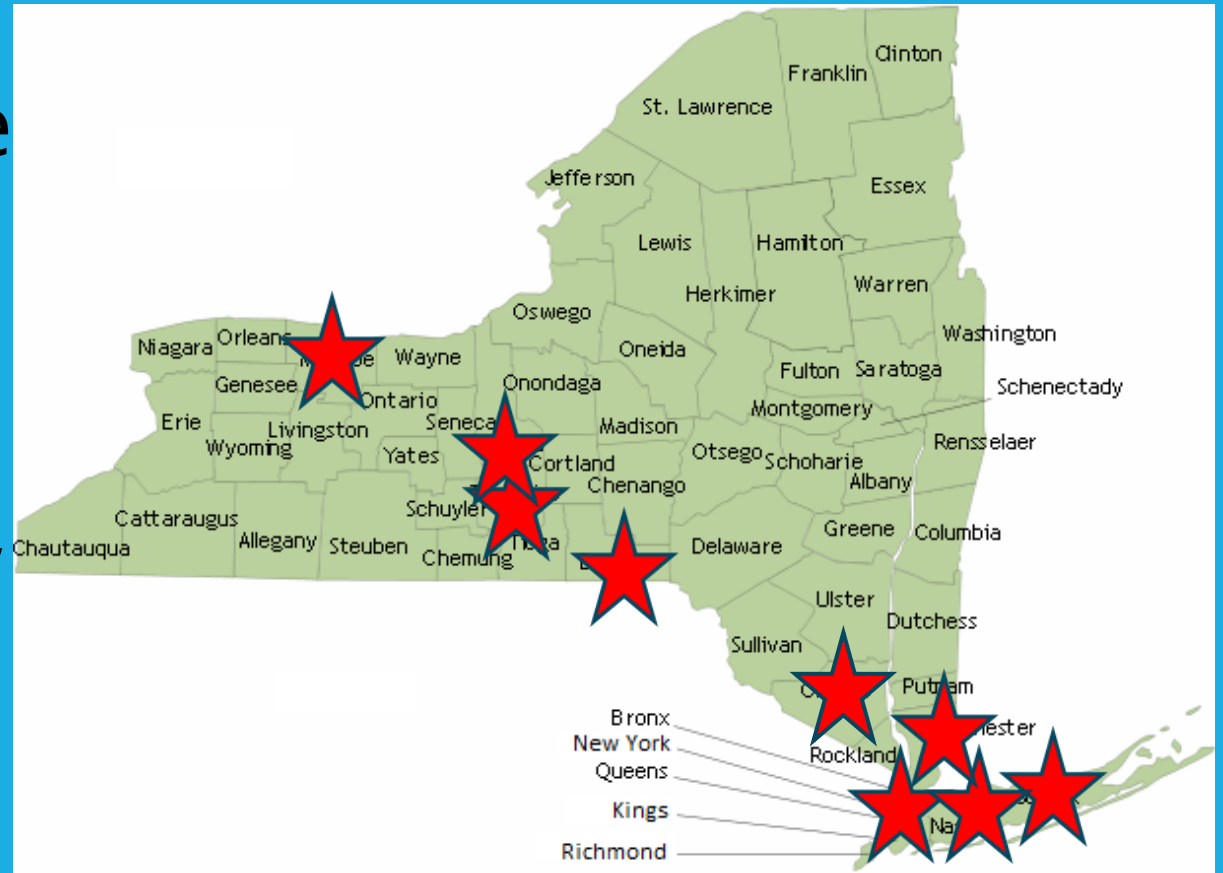
NY has Ireland Vly, Lebanon Reservoir, Lake Switzerland, and Lake Tibet – but Italy does not have a namesake lake in NY.

---

(According to “Characteristics of New York State Lakes Gazetteer of Lakes, Ponds and Reservoirs, Third Edition, October 1987, NYS DEC)

# Question 11: Stop the Spread!

According to the NYS DEC website, this aquatic invasive species was first discovered in 2008 in a small pond in Orange County. It has since been found in Broome, Cayuga, Erie, Kings, Monroe, Nassau, Suffolk, Tioga, Tompkins, and Westchester Counties. What is it?





# Answer: Hydrilla

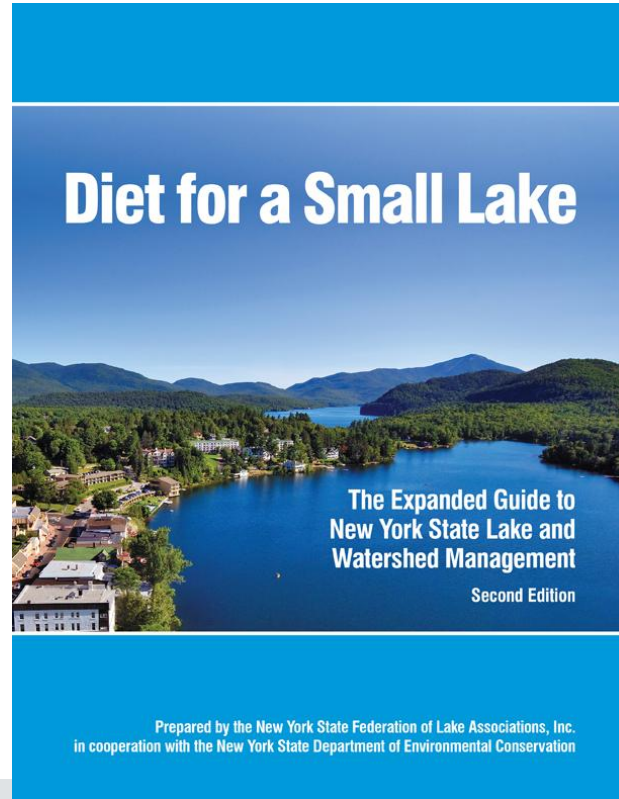
Hydrilla or "water thyme" (*Hydrilla verticillata*) is an aquatic plant from Asia that is one of the most difficult aquatic invasive species to control and eradicate in the United States. Infestations can have negative impacts on recreation, tourism, and aquatic ecosystems. It is a federally listed noxious weed which means that its movement between states and in foreign commerce is prohibited. It is a popular aquarium plant, but it was recently prohibited from sale or possession in New York State.

<https://dec.ny.gov/nature/animals-fish-plants/hydrilla>



<https://nysfola.org/hydrilla/> - Photos by Jon Reis for NYSFOLA

The photo on the cover of “Diet for a Small Lake” shows the lake commonly mistaken for its namesake town. Photo by Carl Heilmann II – our guest speaker tonight.



This is Lake Placid. It is accessible from the village, but you need to walk a few blocks.

## QUESTION 12:

**CONTRARY TO POPULAR  
TOURIST BELIEF, THE LAKE IN  
DOWNTOWN LAKE PLACID IS  
NOT LAKE PLACID. WHAT LAKE  
IS IT?**

---

Bonus Point: In what years did Lake Placid host the Olympics?





**ANSWER: MIRROR LAKE**

Bonus Point: In what years did Lake Placid host the Olympics?

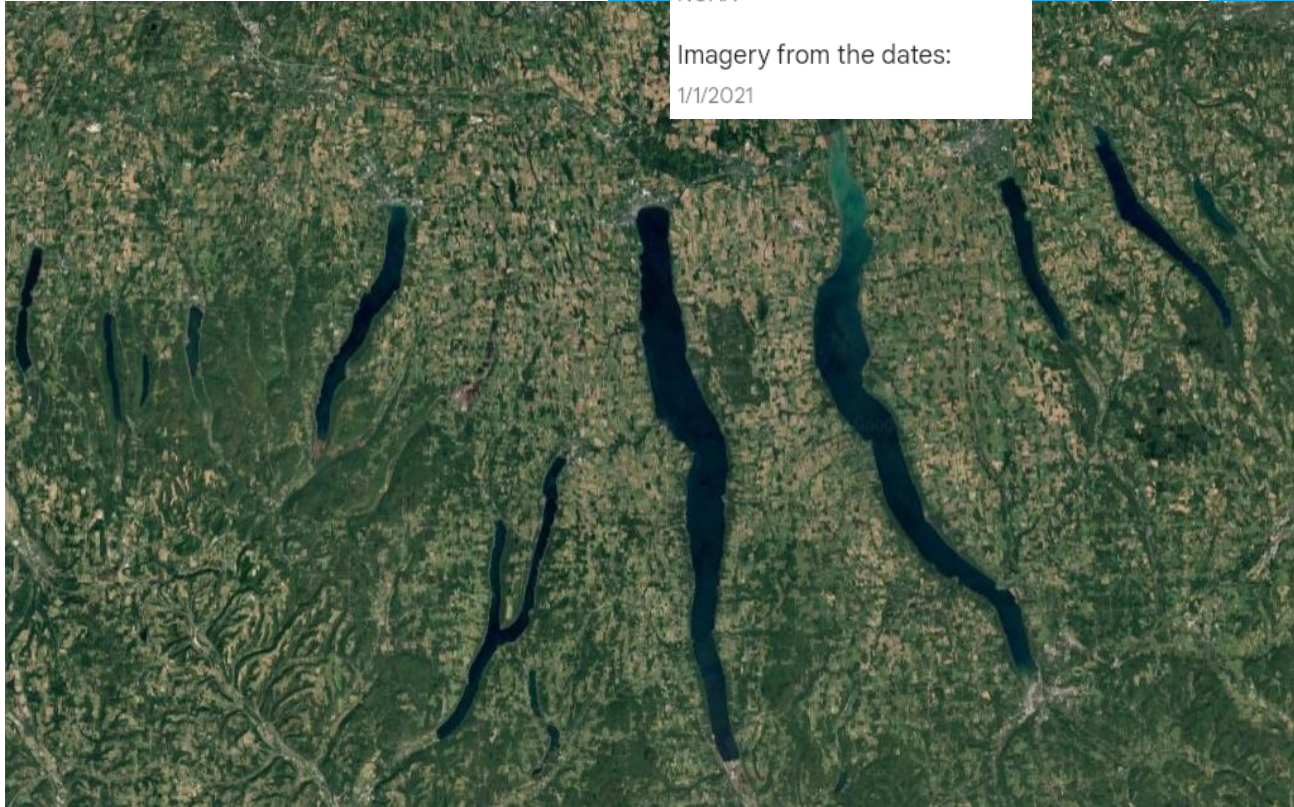
**1932 and 1980**

This map includes data from:

Landsat / Copernicus  
NOAA

Imagery from the dates:

1/1/2021



**QUESTION 13:**

**CAN YOU NAME THE 11 FINGER  
LAKES IN ORDER FROM EAST TO  
WEST?**

---





Conesus

Hemlock

Honeoye

Canadice

Canandaigua

Keuka

Seneca

Cayuga

Owasco

Otisco

Skaneateles

This map includes data from:

Landsat / Copernicus  
NOAA

Imagery from the dates:

1/1/2021



This map includes data from:

Landsat / Copernicus  
Data SIO, NOAA, U.S. Navy, NGA, GEBCO  
NOAA

Imagery from the dates:

12/14/2015–1/1/2021

Note, some visible imagery has unknown date information.



**QUESTION 14:**

**WHAT IS THE LARGEST LAKE  
COMPLETELY IN NY (BY AREA)?**

---



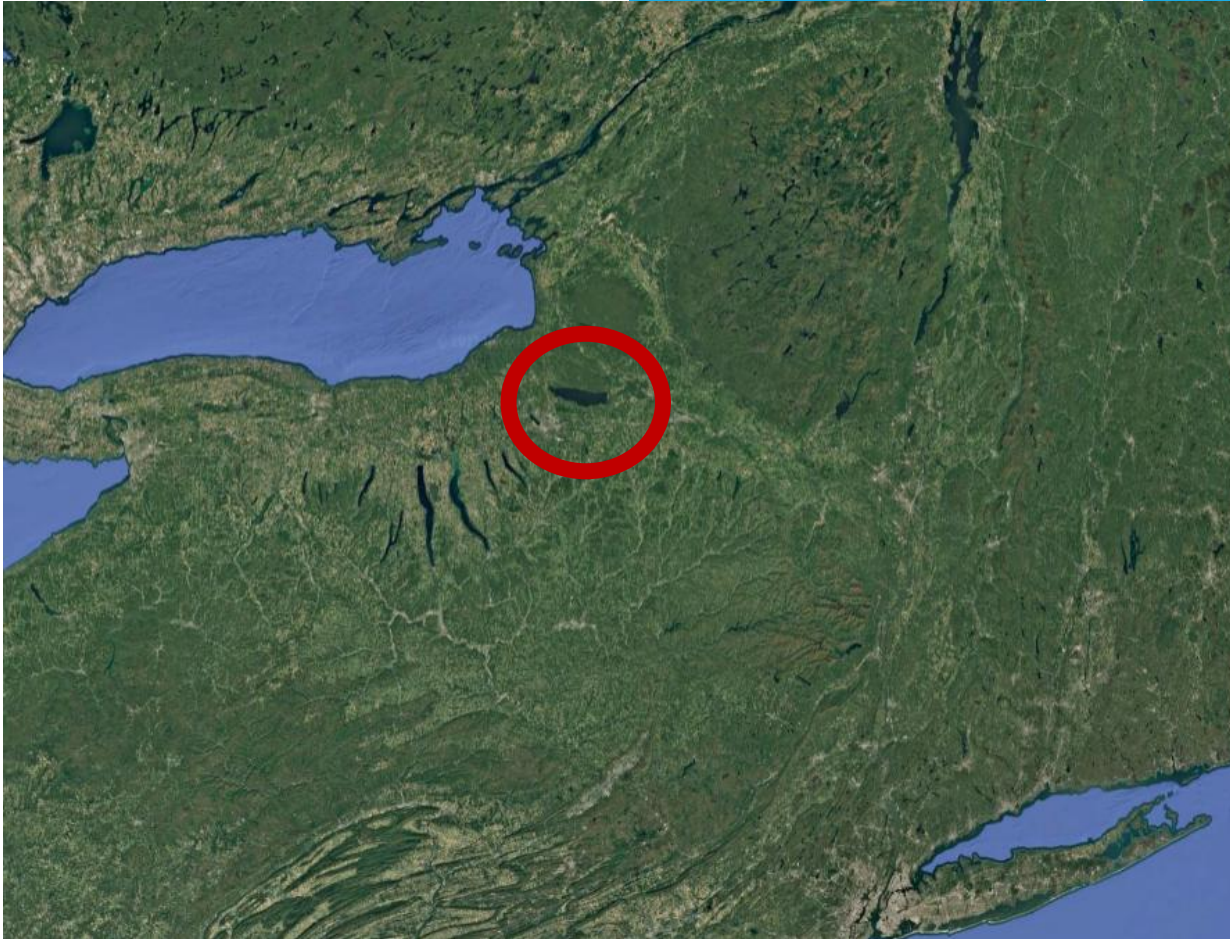
This map includes data from:

Landsat / Copernicus  
Data SIO, NOAA, U.S. Navy, NGA, GEBCO  
NOAA

Imagery from the dates:

12/14/2015–1/1/2021

Note, some visible imagery has unknown date information.



## ANSWER: ONEIDA LAKE

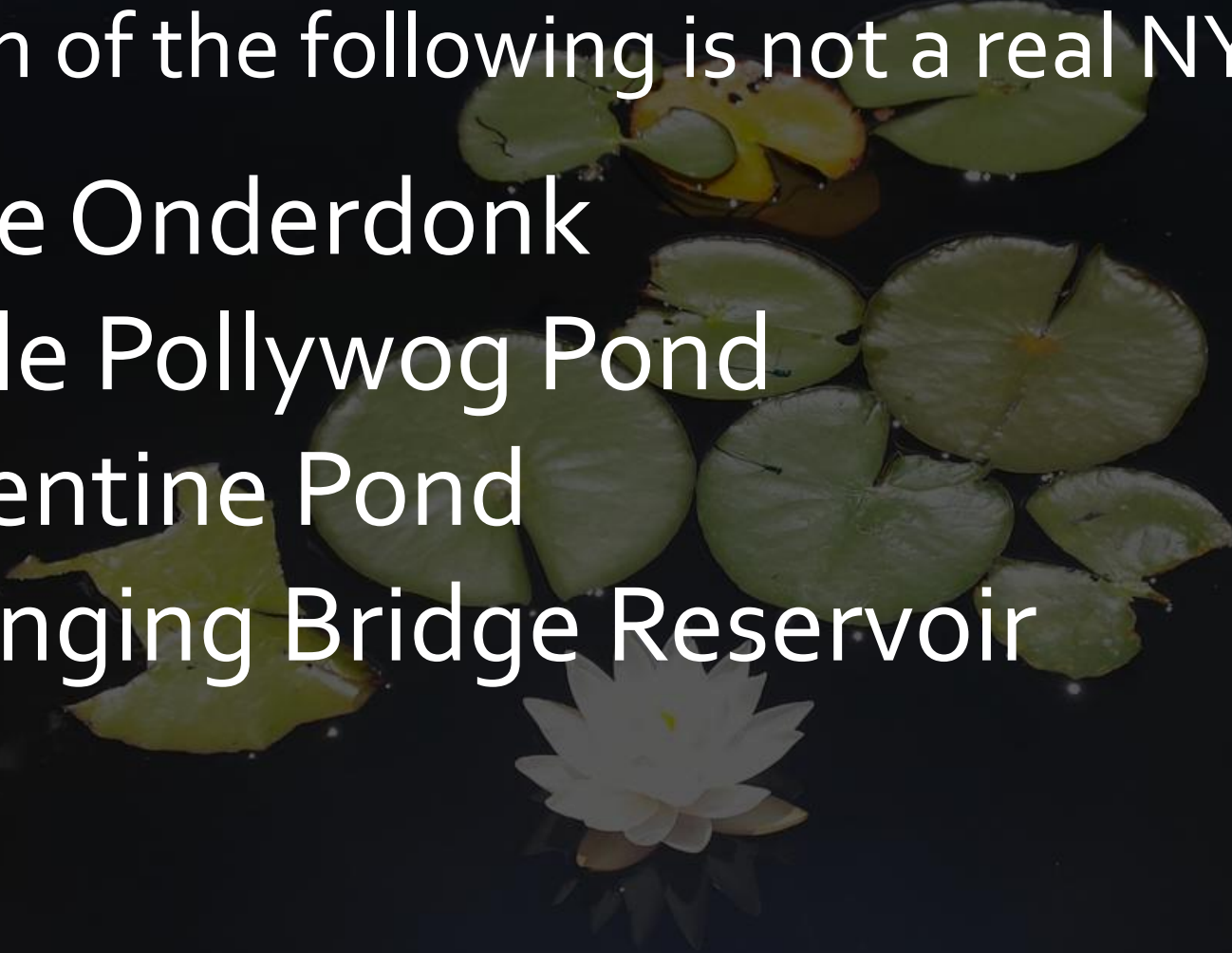
---

Oneida Lake is the largest lake entirely within New York state, with a surface area of 79.8 square miles (207 km<sup>2</sup>).

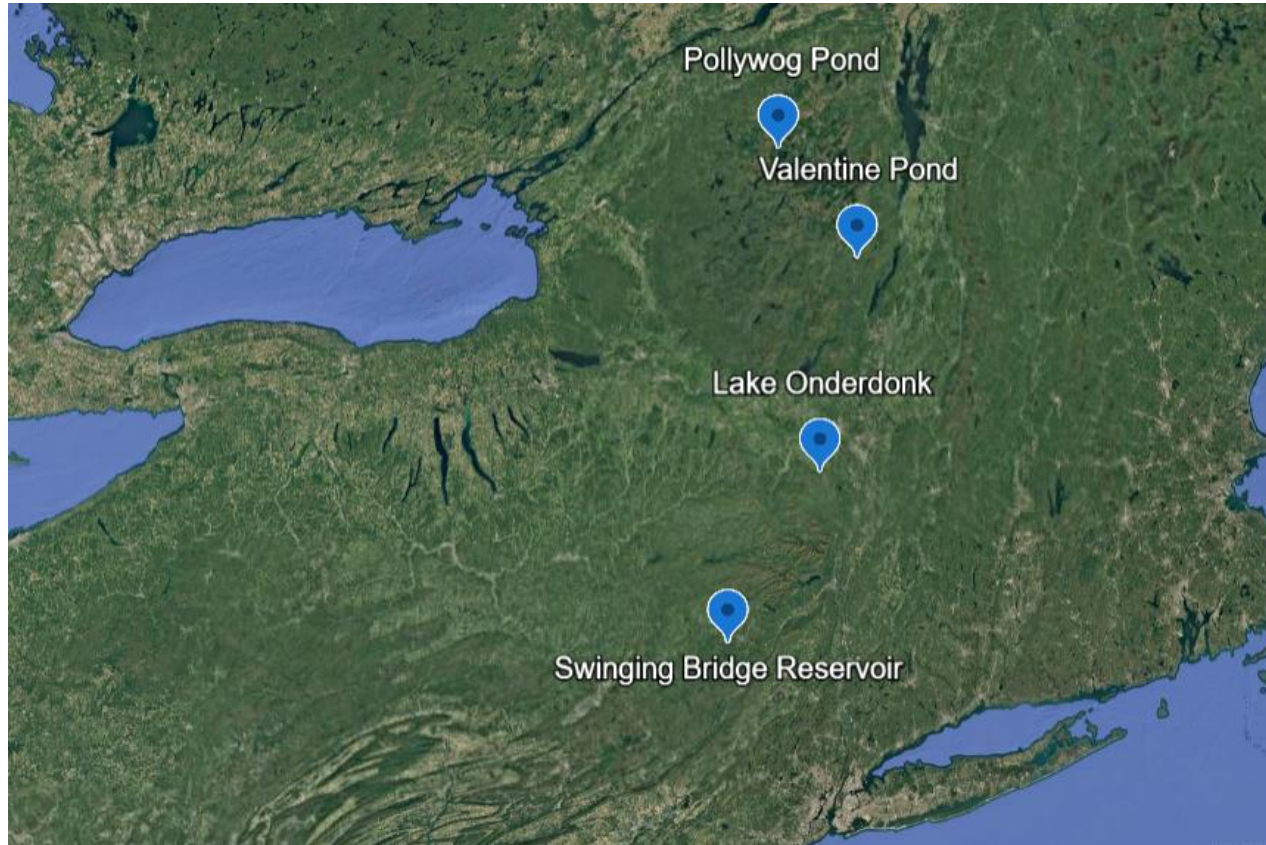
Question 15:

Which of the following is not a real NY lake name?

- Lake Onderdonk
- Little Pollywog Pond
- Valentine Pond
- Swinging Bridge Reservoir







**ANSWER:**

**THEY'RE ALL  
NY LAKES!!**

# Thank you!!



Dr. Fred Lubnow, Senior Technical  
Director of Ecological Services,  
Princeton Hydro, LLC



Laurel Wolfe, NYSFOLA BOD  
and Association Manager, APO  
Sleepy Hollow Lake



Chris Mikolajczyk, Senior  
Project Manager-Aquatics,  
Princeton Hydro, LLC