



Department of
Agriculture and Markets
Soil and Water
Conservation Committee

Agricultural Environmental Management



CNMPs, Planners, and Framework

Greg Albrecht, NYS AGM / SWCC

Comprehensive Nutrient Management Plan (CNMP)



M. **Comprehensive Nutrient Management Plan (CNMP)** means a plan, done in accordance with all applicable Natural Resources Conservation Service - Conservation Practice Standards that includes structural practices, management activities, and land management practices for an AFO associated with crop or livestock production that collectively ensures that the purpose of crop or livestock production and preservation of natural resources are compatible. Implementation of a CNMP is implementation of Best Available Technology Economically Achievable (BAT). The system of practices detailed in the facility's CNMP must address, but is not limited to the transfer, handling, storage and treatment of manure, litter, process wastewater generated from the production areas, food processing waste, and digestate as well as, precipitation on open structures, storage capacities based on the site specific nutrient management plan, details of storage designs and certifications of practices based on NRCS standards and operation and maintenance requirements. In addition, the site-specific nutrient management plan for application of manure, litter, food processing waste, digestate, and process wastewater shall be compliant with NRCS NY 590 to include compliant application methods, rates and timing based on manure and soil analyses, field specific risk assessments for nutrient and sediment transport potential, sheet, rill, and gully erosion control and application setbacks.



ECL CAFO
General Permit

Comprehensive Nutrient Management Plan (CNMP)

- *Simplified Description* -

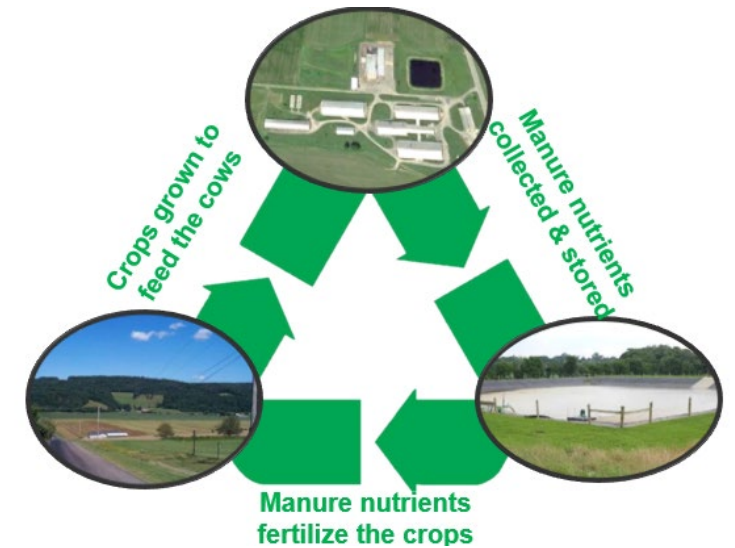
The CNMP is a dynamic, farm-specific plan to assess farmstead areas and fields on livestock farms and address and prevent resource concerns with integrated systems of NRCS conservation practices.

Farmstead Areas

- Feed Storage Wastes
- Process Waters (e.g., Milking Center Washwater)
- Barnyard Areas
- Manure Handling, Transfer & Storage
- Animal Mortalities
- Operation & Maintenance
- Record Keeping
- Emergency Action Plan

Field & Pasture Areas

- Land Application of Manure & Fertilizer
- Soil Conservation / Health
- Operation & Maintenance
- Record Keeping



CNMP – Systems of NRCS Conservation Practice Standards

- Waste Storage Facility (NY313)
- Nutrient Management (NY590)
- Manure Transfer (NY634)
- Animal Mortality (NY316)
- Compost Facility (NY317)
- Vegetated Treatment Area (NY635)
- Waste Facility Closure (NY360)
- Anaerobic Digester (NY366)
- Karst Sinkhole Treatment (NY527)
- Heavy Use Area Protection (NY561) and more...

...supported by additional technical guidelines and engineering standards.



NRCS (NY) Field
Office Technical
Guide

Comprehensive Nutrient Management Plan (CNMP)



AEM Certified Planners

- Administered through NYS AGM through AEM Law
 - Managed by CNMP Specialists on staff
- Required for NYS DEC CAFO Permit (and other work in voluntary programs)
 - Planner of record signature for CNMP Development and Updates

Step 1: Become Certified Crop Adviser (CCA)

- education, training, professional experience, exams, and continuing education requirements

Step 2: Participate in a 4-day AEM / NRCS CNMP Training

Step 3: Complete the CNMP 3-Plan Review Process

Once Certified: Do good work, maintain CCA via continuing education units, and successful QA/QC reviews.



Current Directory
of the 52 AEM
Certified Planners

Agricultural Environmental Management – Core Concepts

Open to all farmers

Voluntary, incentive-based

Locally-led & delivered

- Farmers
- Soil & Water Conservation Districts
- Natural Resources Conservation Service
- Cornell Cooperative Extension
- Farm Service Agency
- AEM Certified Planners and PEs
- Ag Businesses
- Farmer Organizations
- NGOs

Prioritized based on natural resource needs, local AEM Strategic Plans, and farmer goals

Customized with farm-specific plans

- Science-based (NRCS Standards)
- Wide range of practice systems available

Trust-based and relationship building

- Farmers choose from planned practices to benefit their farms and the environment

Leads to practice adoption

Promotes teamwork

Coordinates assistance

Adaptive to future priorities



AEM 5-TIER APPROACH

AEM Tier	Purpose	People
Tier 1 – Inventory (Questionnaire)	Basic info and interests from the farmer	Farmers, Districts, Planners
Tier 2 – Environmental Assessment (“Tier 2 Worksheets”)	Walk the farm and discuss stewardship, management concerns, and opportunities for improvements	Farmers, Districts, Planners
Tier 3 – Conservation Planning	Develop conservation plans	Farmers, Districts, Planners, Specialists
Tier 4 – Practice Implementation	Implement conservation practices based on the plans	Farmers, Districts, Planners, Specialists, Engineers, Contractors, Permitters
Tier 5 – Evaluation and Updates	Evaluate/update plans, practices, and programs	Farmers, Districts, Planners



AEM Resources



AEM TIER 3 PLANS AND PROJECT EXAMPLES

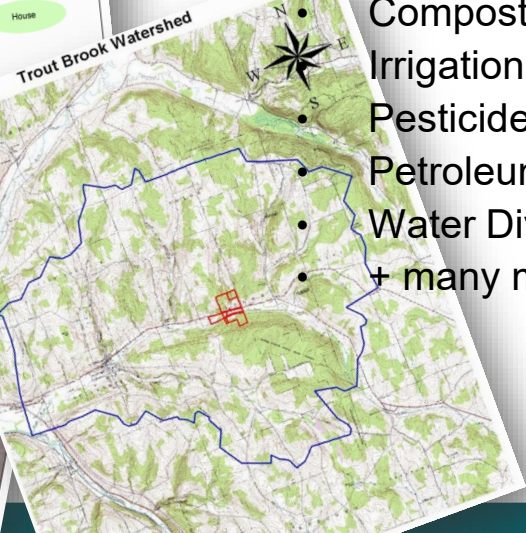
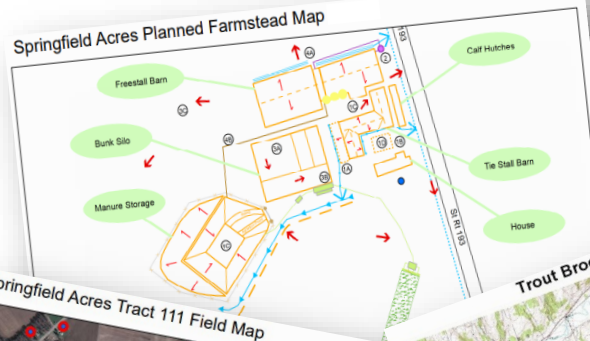
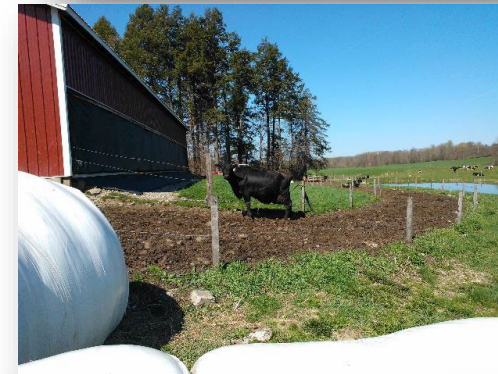
AEM Tier 3 Plan Types

- Farmstead
- Soil Health
- Nutrient Management
- Pasture / Grazing
- Forest
- Stream Corridor
- Pest
- + combinations (e.g., CNMP)



AEM Tier 4 Practices (examples)

- Cover Crops
- Rotational Grazing
- Nutrient Management
- Conservation Crop Rotation
- Grassed Waterways
- Water and Sediment Basins
- Tree Planting
- Stream Corridors/Buffers
- Wetlands
- Forestry/Tree Planting
- Pollinator Habitat
- Barnyards
- Composting
- Irrigation / Ponds
- Pesticide Facilities
- Petroleum Storage
- Water Diversions
- + many more



FUNDING PROGRAMS TO ADVANCE AEM ON FARMS



SWCD Directory

- Locally-led and sponsored by your **Soil & Water Conservation District** to support planning, implementation, and adoption of BMP Systems
 - Funded through via the NYS AGM / NYS Soil and Water Conservation Committee
 - New rounds offered annually
 - AEM participation is a pre-requisite for cost-share funding
 - **AEM Base Program**
 - **Agricultural Non-Point Source Pollution Abatement and Control Program (AgNPS)**
 - **Climate Resilient Farming (CRF)**
 - **CAFO Enhanced Nutrient and Methane Management Program (CAFO ENMP)**
 - **Ecosystem Based Management (EBM) Programs**
- Other Programs from NYSAGM (Farmland Protection Grants), NYSDEC, USDA-NRCS (EQIP, CSP), USDA-FSA, Cornell PRO-DAIRY (Dairy Advancement Program), USEPA, and others....

+ Significant, on-going investment by farmers.

WATERSHED COLLABORATION

Collaboration is the best tool in the toolbox....

- Support each other in the long-term pursuit
 - Work the watershed plan, its priorities, its sectors, and its complementary actions
 - Allow each other space to operate their specialties
- Local funds help leverage state and federal funds
 - Help with District staff capacity; build long-term, skilled, trusted conservation staff
 - Relationships are key for practice adoption
- Invite Districts, CCE, farmers, planners, etc. to present
- Recognize / lift successful, local examples
 - Continuing to make practices more normal, common in the community
 - Share what you learned at meetings with others



Greg Albrecht

Div. of Land and Water Resources

Dept. of Agriculture and Markets / NYS Soil and Water Conservation Committee

Greg.Albrecht@agriculture.ny.gov

Thank you!