

# The Evolution of a Town-Lake Association Partnership

Mike Schaffer  
Rose O'Boyle  
Jane Oppenlander  
Kurt TeKolste  
Mark Schaffer  
Aileen Sheil

Lake Luzerne Association  
Environmental Committee

Jim Niles, Supervisor  
Town of Lake Luzerne

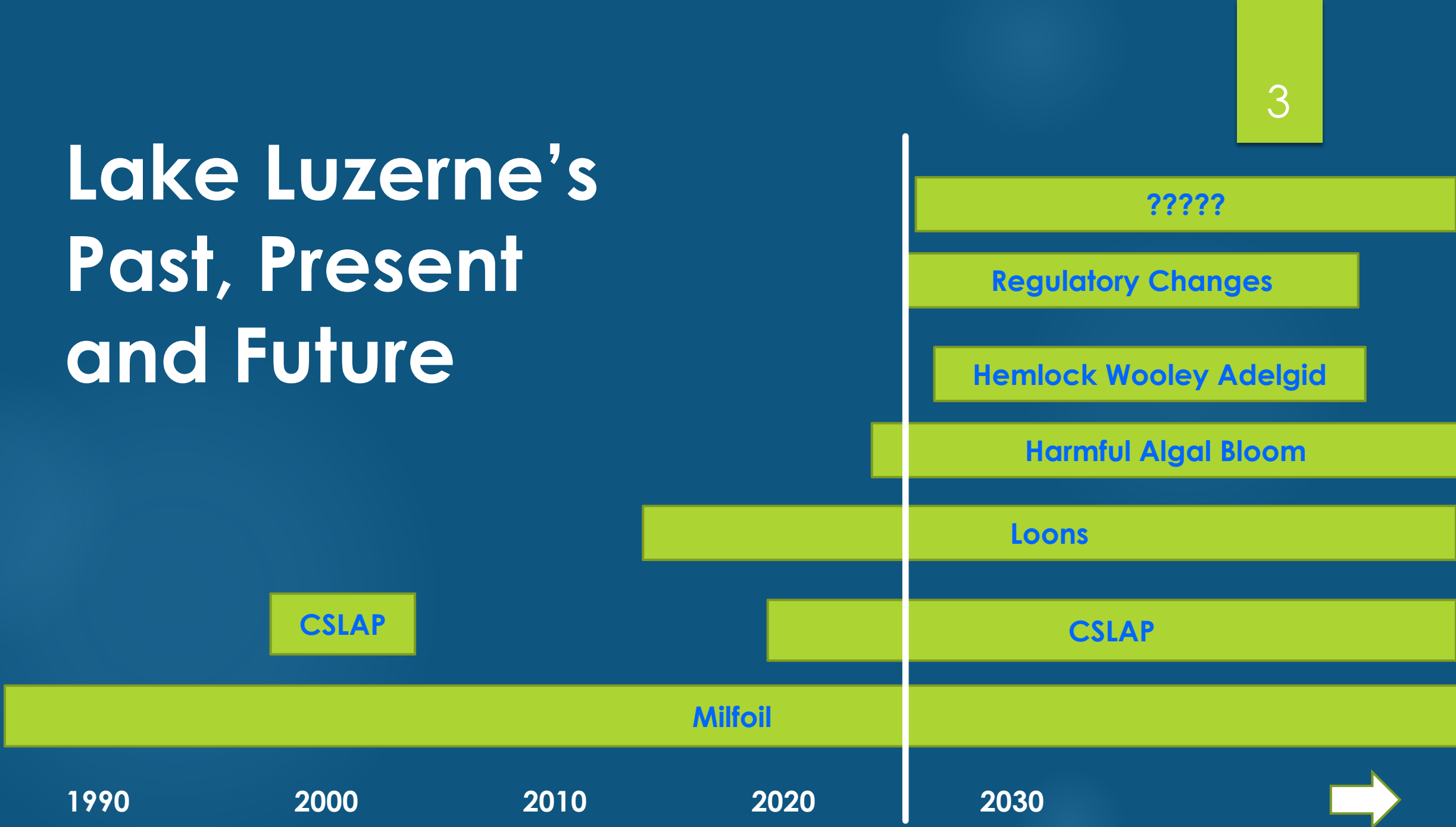


# Outline

- ▶ Evolution of Lake Management
- ▶ Lake Management Examples
- ▶ Evolution of Community Education
- ▶ Community Education Example
- ▶ Town Perspective
- ▶ Lake Association Perspective
- ▶ Questions and Discussion



# Lake Luzerne's Past, Present and Future



1990

2000

2010

2020

2030



CSLAP

Milfoil

Loons

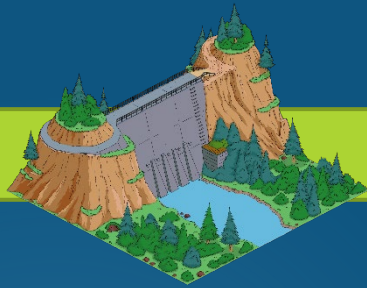
Harmful Algal Bloom

Hemlock Wooley Adelgid

Regulatory Changes

?????

# Partners in Lake Conservation



Northwoods Association

Fourth Lake Community



School District

Public Library



Town Government



Lake Luzerne Association



1990

2000

2010

2020

2026

# Evolution of Lake Management

5

- Early detection of invasive species
- Seek solutions and follow through
- Keep up with technological & regulatory changes in lake management



# Example #1: Preparing for ProcettaCOR Treatment

- ▶ Determine and demonstrate why using an herbicide is desired
- ▶ Permitting and education process



# Example #2: HAB Reporting Protocol

7

## Responsibility

### Lake users

If you observe a potential HAB, take a picture and report it to the DEC via [Suspicious Algal Bloom Report Form](#) and call Town of Lake Luzerne 51(518) 696-2711, ext. 1  
Check the [DEC HABs Interactive Map](#) for confirmation a few days after your report



## Town

Town contacts NYS DEC and DOH for guidance and takes recommended action  
Notifies Lake Luzerne Association Environmental & Education Committee



## Lake Association

If instructed by the town, Lake Luzerne Association notifies membership via email and Facebook page

# Example #2: HAB Reporting Protocol

– cont.

**Harmful Algal Blooms**  
**Know it, Avoid it, Report it!**

 [www.dec.ny.gov](http://www.dec.ny.gov)

**KNOW IT!**  
**WHAT ARE HARMFUL ALGAL BLOOMS (HABs)?**

Most algae are harmless, but exposure to toxins and other substances produced by *harmful* algal blooms can make people and animals sick. HABs can impact drinking water, and cause discolored water, floating scums, and unpleasant odors that can reduce the value of a lake or river. HABs are sometimes called blue-green algal blooms even though they can be various colors.

  
**Keep yourself, your family and your pets out of water that is discolored or has scum on the surface.**

**CAUSES, PREVENTION & RESPONSE**

Scientists do not fully understand the exact causes of HABs. They occur most often in waters high in phosphorus and/or nitrogen. New York State has many programs and activities to reduce phosphorus and nitrogen from entering the water from surrounding lands.

DEC's HABs Program, in cooperation with the NYS Department of Health and the NYS Office of Parks, Recreation and Historic Preservation, works to identify and respond to HABs. DEC and DOH investigate HABs reports, sample blooms and conduct research to learn more about HABs.

**WHAT DO HABs (USUALLY) LOOK LIKE?**

The appearance of HABs can vary. Colors can include shades of green, blue-green, yellow, brown, red, or white

<b>SPILLED PAINT APPEARANCE</b> 	<b>PEA SOUP APPEARANCE</b> 
<b>STREAKS ON SURFACE</b> 	<b>FLOATING DOTS OR CLUMPS</b> 

**WHAT TO DO**  
**AVOID IT!**

It can be hard to tell a harmful algal bloom from a non-harmful algal bloom, so it is best to avoid swimming, boating, fishing or other recreation in discolored water that looks like it might have a bloom. Avoid eating fish caught from areas with a bloom. Never drink, prepare food, cook, or make ice with untreated surface water, even if there is no visible bloom.

**IF CONTACT OCCURS**

- Rinse thoroughly with clean water.
- Stop using the water.
- Seek medical attention if vomiting, nausea, diarrhea, skin, eye or throat irritation, allergic reactions or breathing difficulties occur.
- Report symptoms to local health department or the NYS Department of Health.
- Take care to remove algae from pet fur.

**REPORT IT!**

If you think you see a harmful algal bloom, fill out a **Suspicious Algal Bloom Report Form** and submit it with any pictures to: [on.ny.gov/habform](http://on.ny.gov/habform).  
-or-  
call: **518-402-8179**

If you experience any health effects from a HAB, report them to your local health department:  
-or-  
email: [harmfulalgae@health.ny.gov](mailto:harmfulalgae@health.ny.gov)

**CONTACT & LINKS**

For updates about the location and status of HABs from spring through fall, see [www.dec.ny.gov/chemical/83310.html](http://www.dec.ny.gov/chemical/83310.html)  
-or-  
sign up for DEC's email newsletter **Making Waves** at [www.dec.ny.gov/about/661.html](http://www.dec.ny.gov/about/661.html)

For information on the NYS HABs Initiative and funding opportunities, see: <https://on.ny.gov/HABsAction>

DEC: [on.ny.gov/hab](http://on.ny.gov/hab)  
NYSDOH: [www.health.ny.gov/environmental/water/drinking/bluegreenalgae](http://www.health.ny.gov/environmental/water/drinking/bluegreenalgae)  
EPA: <https://www.epa.gov/cyanoalgaes>

NYS Department of Environmental Conservation  
Division of Water  
625 Broadway, Albany, NY 12233-3508  
Phone: (518) 402-8179 | email: [HABsinfo@dec.ny.gov](mailto:HABsinfo@dec.ny.gov)



# Example #3: Dam Restoration

9

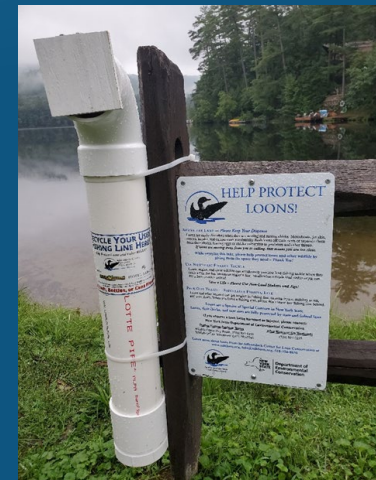
- ▶ Town of Lake Luzerne and the Northwoods Association collaborate to form and maintain a Tax District.
- ▶ Allows the Town to “lend” money to the Association for capital projects. The “loan” is repaid through residents’ property taxes, assuring every resident pays their fair share.
- ▶ Tax District is currently being used to repair damage to the drawdown channel used to control nuisance aquatic vegetation.



# Evolution of Community Education

10

- ▶ Following matting, town funded and contracted for herbicide and DASH harvesting.
- ▶ Lake Association turned their focus to community education
  - ▶ Adult programs, library story time, high school citizen science program
  - ▶ Added loon conservation and became a certified loon-friendly lake



# Example #4: Lake Day

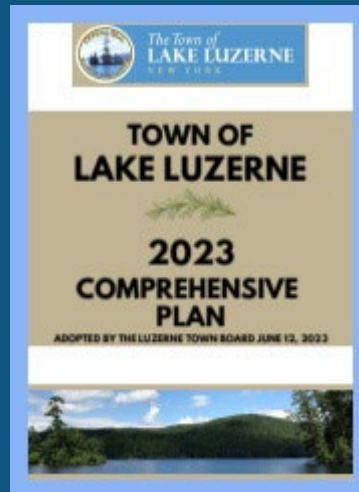
11

- ▶ Joint venture across the Lake Luzerne watershed including all 3 lake associations
- ▶ Leveraged existing community events and had educational activities and information available
- ▶ Engages all ages



# Town Perspective

- ▶ Develop regular dialogs with supervisor and town councilmen
- ▶ Develop dialogs and regular meetings with other stakeholders
- ▶ Review town's masterplan and connect its planned objectives to watershed maintenance
- ▶ Consider economic implications of watershed preservation
- ▶ Be familiar with the town budget process, revenue streams, and calendar
- ▶ Consider grant opportunities



# Sustaining Lake Protection

## A Framework for Association Leadership

13

### Leadership Pipeline

#### Recruit Younger Members

- Involve early: data collection roles
- Work with experienced members
- Low barrier entry via monitoring tasks

### Town + Association

#### Shared Continuity

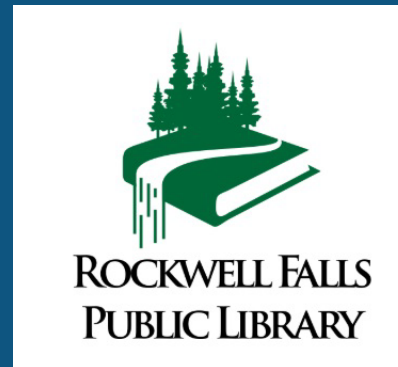
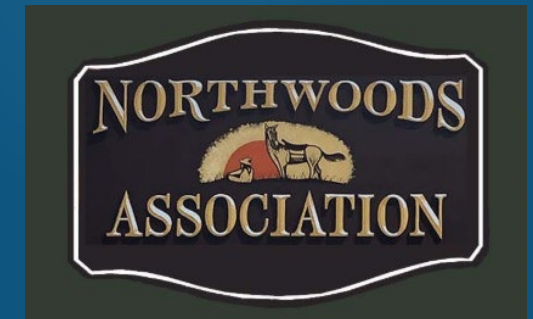
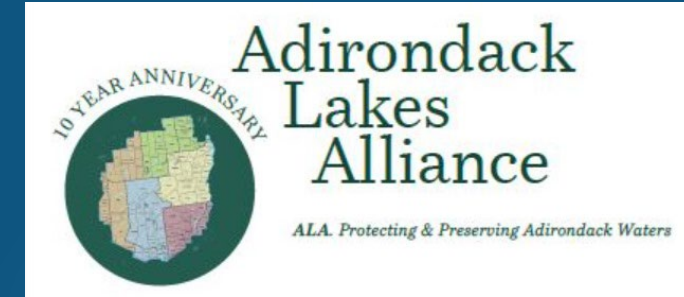
- Joint ownership of the monitoring
- Town staff + volunteers = resilience
- Handoffs documented, not improvised

### Annual Water Quality Monitoring — Why Consistency Matters

- PercellaCOR treatment released phosphorus to deep water
- Detectable only via deep readings — needs prior baseline
- **Annual cadence = early warning system**
- Sampling is low-cost, high-value
- Multi-year data = real, actionable knowledge
- **Program outlasts any single volunteer or board**

**Foundation: A Low-Cost Baseline — Agreed Upon, Understood, and Protected by Everyone**

# Lake Luzerne's Past, Present & Future



# Questions & Discussion

# Example: Peach blossom Jellyfish

16

- ▶ Rockwell Falls Public Library librarian wrote a book about peach blossom jellyfish which served basis for a storytime
- ▶ Grant from Warren County Soil and Water Conservation District enabled the book and story time craft kits to be distributed to all libraries in Warren County



Source: Adirondack Council

