



Department of
Environmental
Conservation

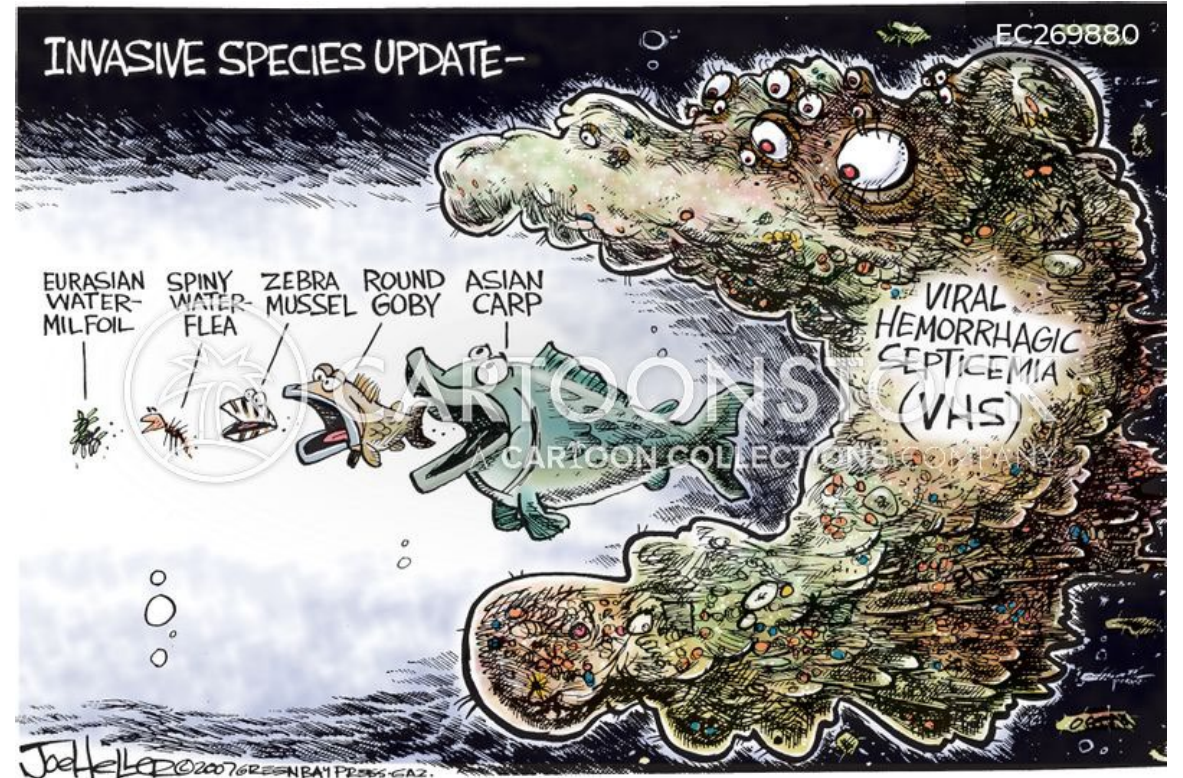
A Smorgasbord of AIS Information

New York State Federation of Lake Associations

May 8, 2026

Overview of Presentation

1. EDRR Species – newly arrived species and some expected arrivals
2. Updates on water chestnut management
3. Funding resources



Joe Heller 2007

EDRR - Plants

Water Soldier (*Stratios aloides*)

Water Violet (*Hottonia palustris*)

Water Spangles (*Salvinia minima*)

Fanwort (*Cabomba caroliniana*)

Water Lettuce (*Pistia stratiotes*)

Water Hyacinth (*Pontedaria crassipes*)

Floating Water Primrose (*Ludwigia peploides*)

*Not currently listed in Part 575

Prohibited and Regulated Species



New Arrival

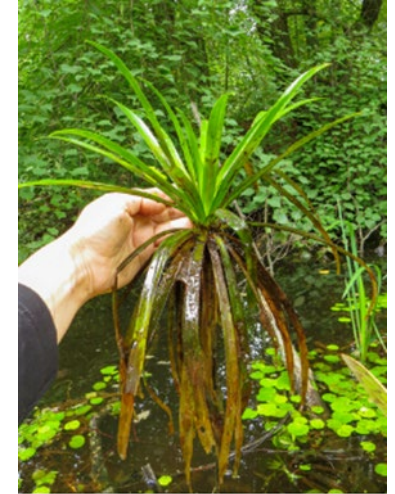
Water Soldier (*Stratiotes aloides*)

- Native to Europe and NW Asia
- Ornamental
- First detection in U.S. and New York (Putnam County)
- In North America previously found only in Ontario

Two forms:

- Submerged during cooler months
- Emergent in summer (perennial)
- Can be spread by turions and offsets (like spider plants)
- Prefers slow-moving, eutrophic and mesotrophic areas
- May loosely root in sediment but can also be found free floating

- <https://storymaps.arcgis.com/stories/51ee8af9aab34ce49100fe4ac2f6dfe7>



Water Soldier

Identifying characteristics

- Rosette of rigid, thin, sharply serrated leaves
- Leaves can be up to 2 feet in length
- Resembles an aloe plant or the top of a pineapple
- May produce a white flower with three petals which becomes a fruit with seeds
- No flowers seen in Ontario or NY
- **Not listed in Part 575**



- <https://storymaps.arcgis.com/stories/51ee8af9aab34ce49100fe4ac2f6dfe7>

Water Soldier Status

- Used rakes in 2025 (mid-May) to remove plants from both the surface and the bottom of the pond.
- Location will be surveyed and monitored this season. Will any turions have survived the winter?

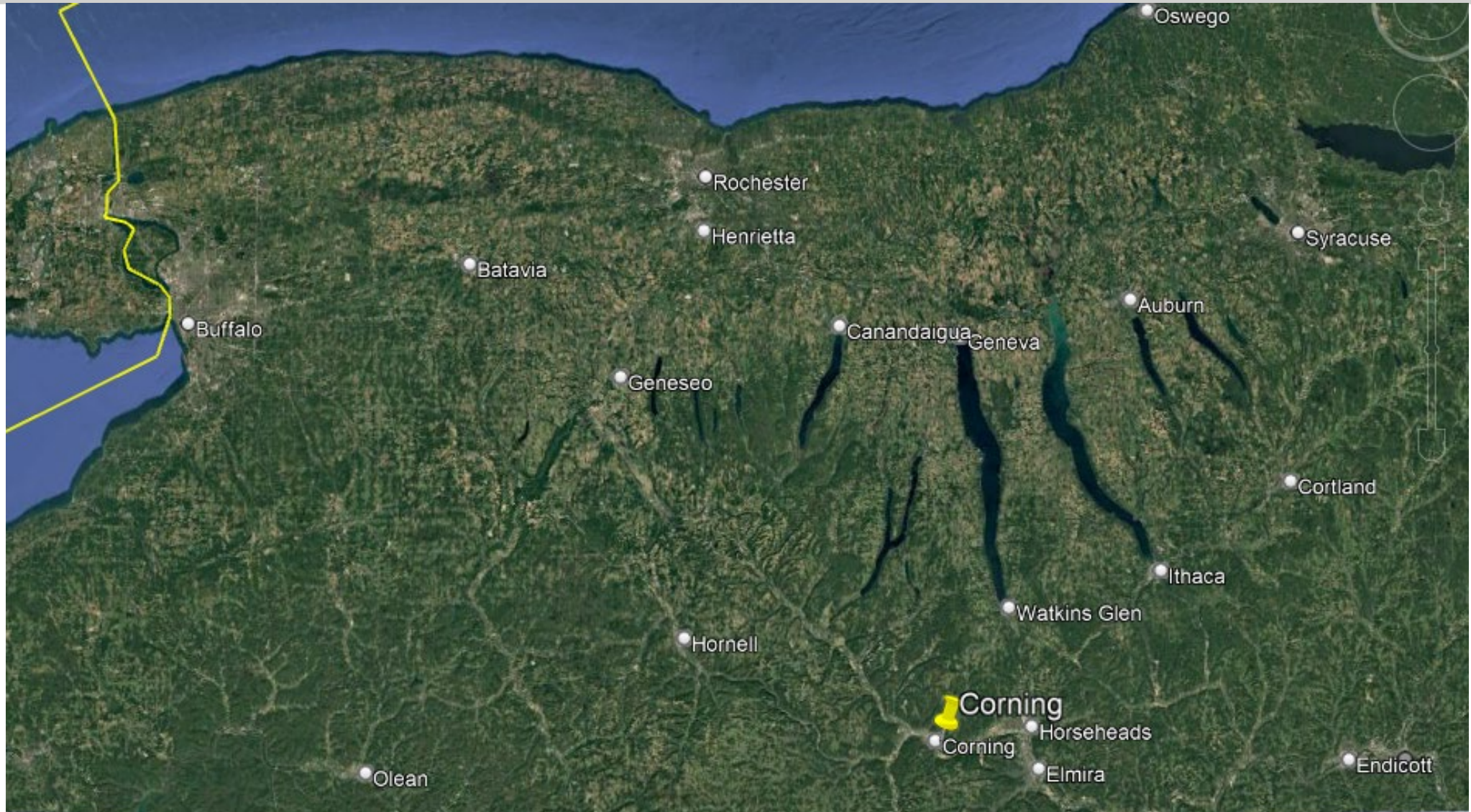


Water violet (*Hottonia palustris*)

- Native to Europe
- Ornamental plant
- Rooted, submerged perennial
- Leaves are submerged, alternate or whorled, pinnate
- Leaves are similar to those of parrot's feather (*Myriophyllum aquaticum*)
- Slow moving waters, lake margins, ditches, and marshes
- Spreads through fragmentation
- First detection in NY (Corning) in small ornamental pond with no outlets
- **Not listed in Part 575**



Water violet reports

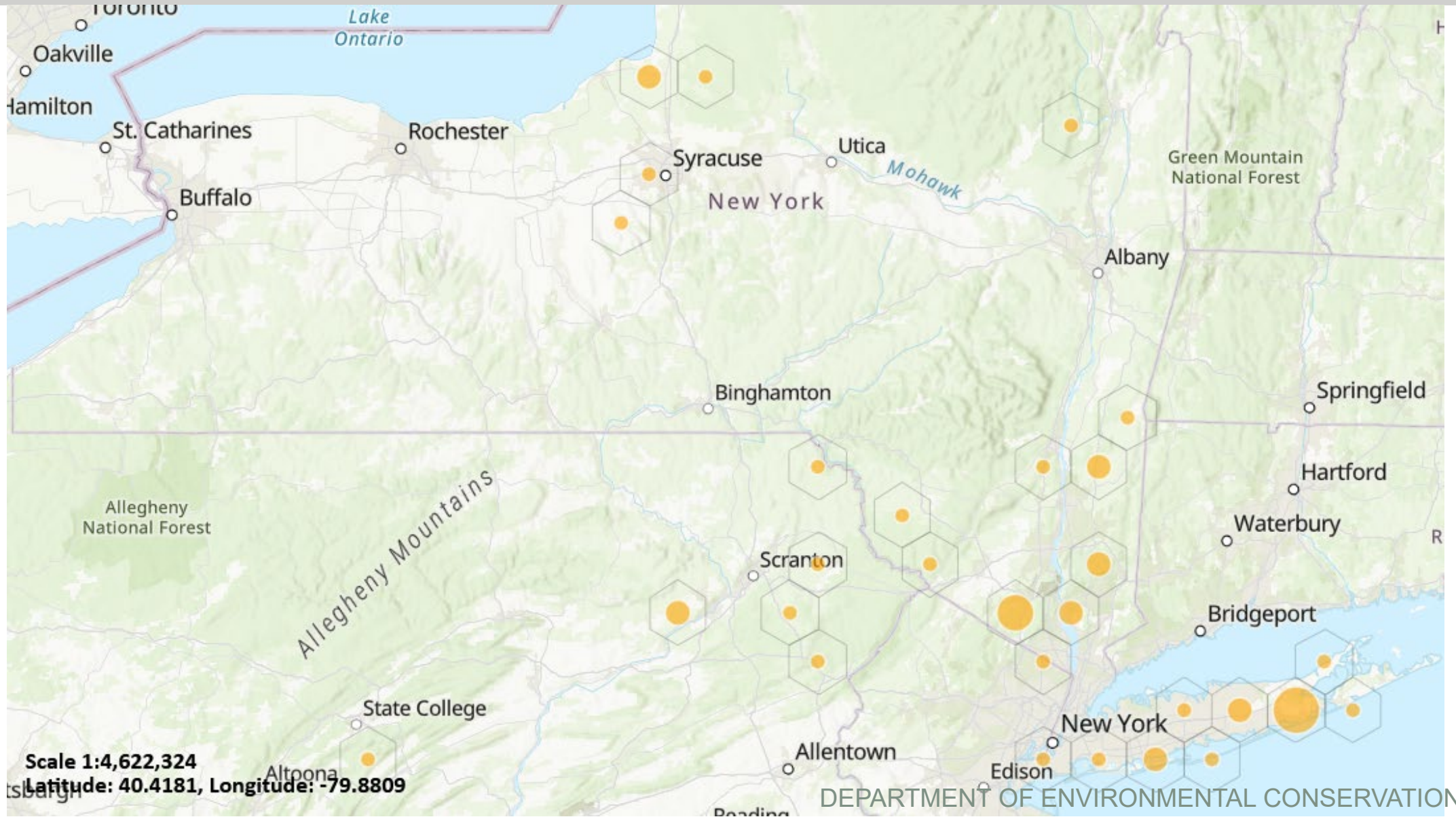


Fanwort (*Cabomba caroliniana*)

- Native to South America and Southeast U.S.
- Aquarium and ornamental plant
- Submerged and rooted
- Underwater leaves are divided into fine branches
- Flowering stems grow above water surface with white flowers with yellow centers
- Stagnant or slow flowing water
- Spreads through fragmentation
- Generally found in SE NY but recently detected in the Seneca River and Little Salmon River which is downstream from 2024 detection in Black Creek.
- **Prohibited in New York (Part 575)**



Fanwort Reported Locations

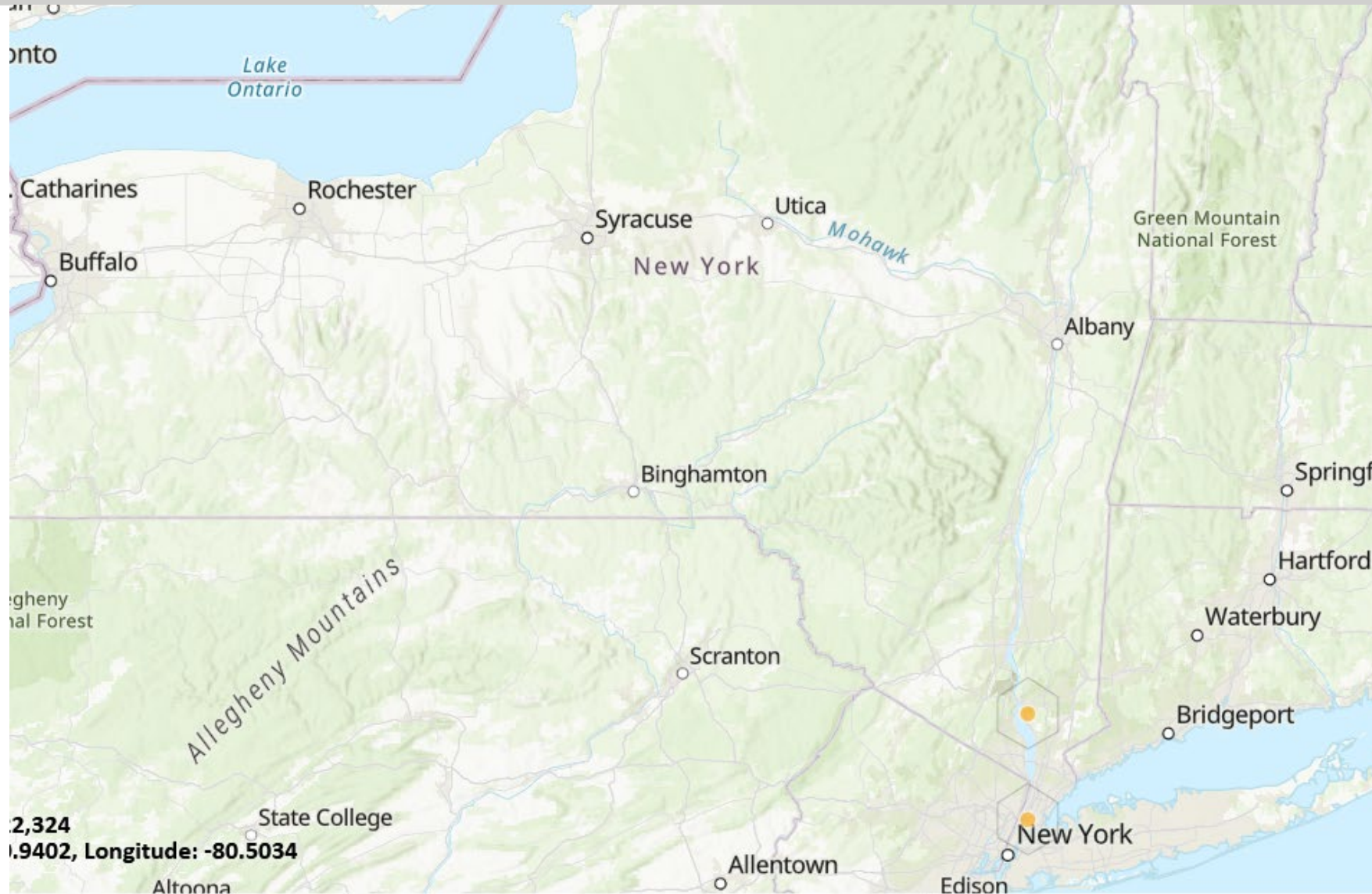


Water Spangles (*Salvinia minima*)

- Native to Central and South America
- Aquarium and ornamental plant
- Free floating, rootless
- Floating leaves are oval with heart-shaped bases and rounded to notched tips
- Smaller leaves lie flat on the water surface while larger leaves fold upright on the mid-rib
- Leaves are uniformly covered with white hairs
- Spreads by rhizome fragmentation
- Found in Richmond County (Staten Island) and Westchester County
- 2025 first report in Western NY
- **Not listed in Part 575**



Water Spangles Confirmed Locations

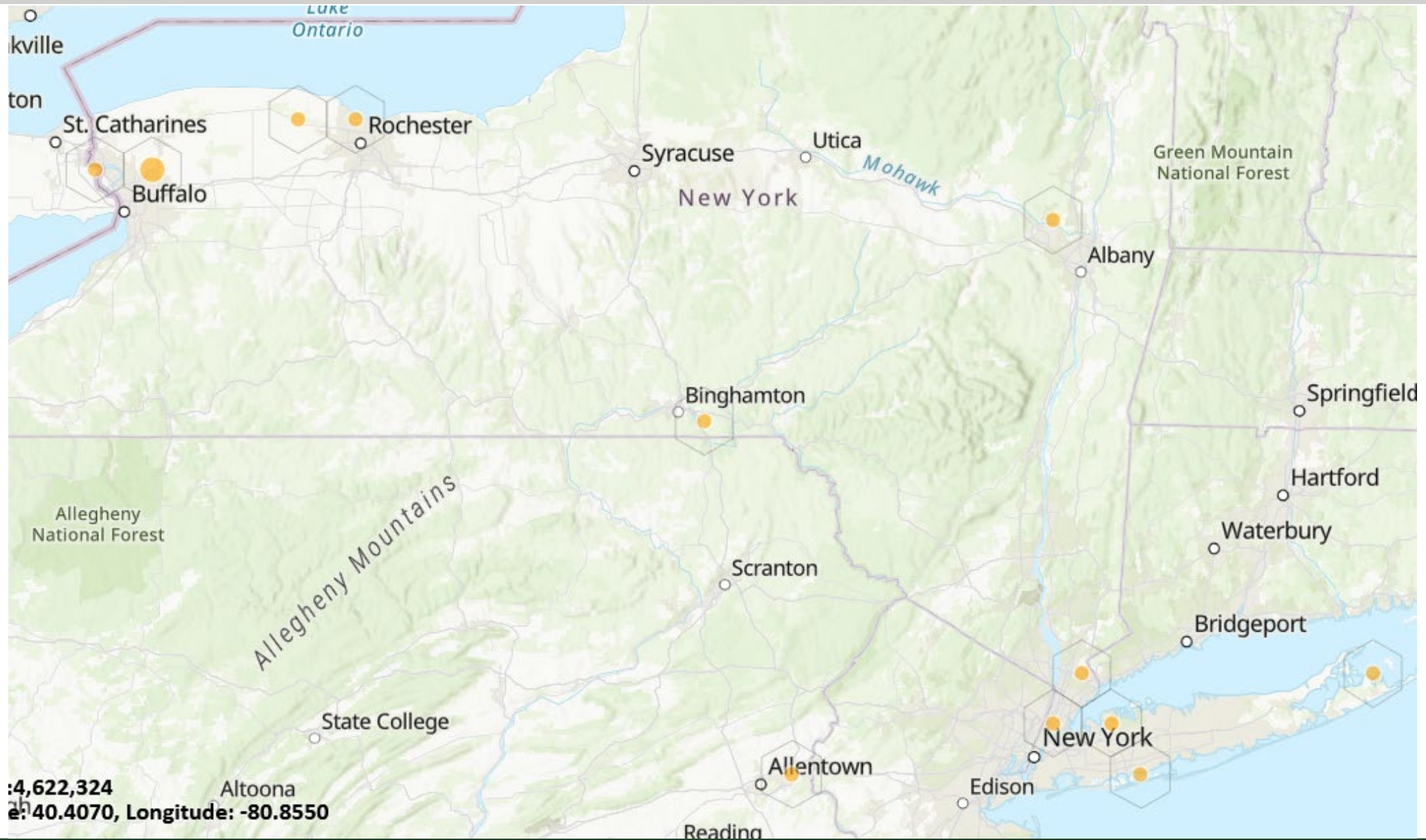


Water Lettuce (*Pistia stratiotes*)

- Native to Africa
- Ornamental
- Spreads by fragmentation, seeds, and water dispersal
- Multiple reports from Erie, Nassau, Suffolk, Onondaga, Westchester, and Queens Counties
- No known overwintering populations but will observe at recorded locations
- **Not listed in Part 575**



Water Lettuce Confirmed Summer Reports

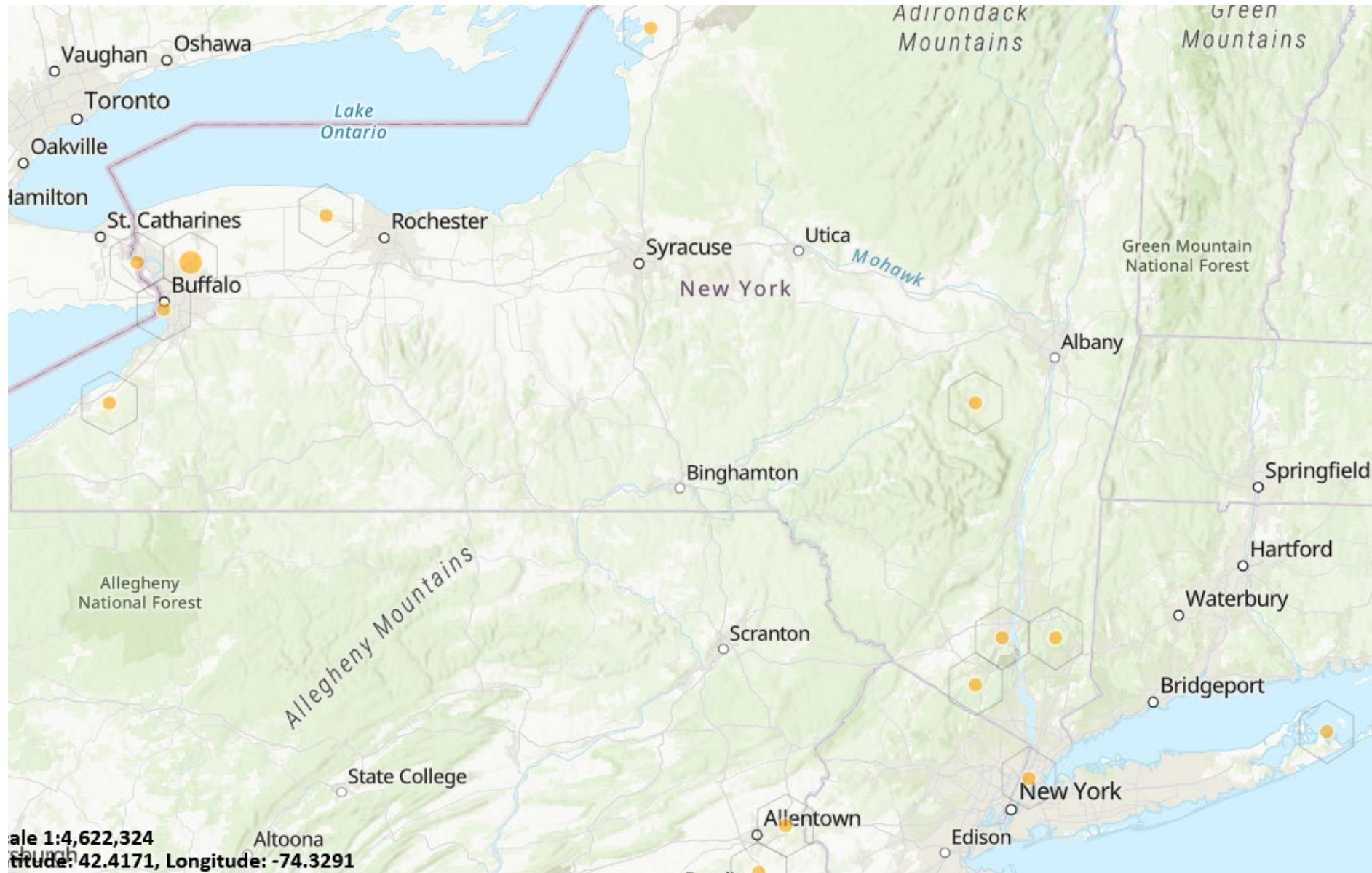


Water Hyacinth (*Pontedaria crassipes*)

- Native to South America
- Ornamental
- Prefers slow-moving waters
- Has inflated petioles which are distinctive
- Still getting frequent summer reports in western (Erie and Niagara Counties) and southeastern (Nassau and Suffolk Counties) New York
- Have not seen it overwintering. But did get a winter report which could not be verified due to inaccessibility caused by snow and ice.
- **Not listed in Part 575**



Water Hyacinth Confirmed Summer Reports



Floating water primrose

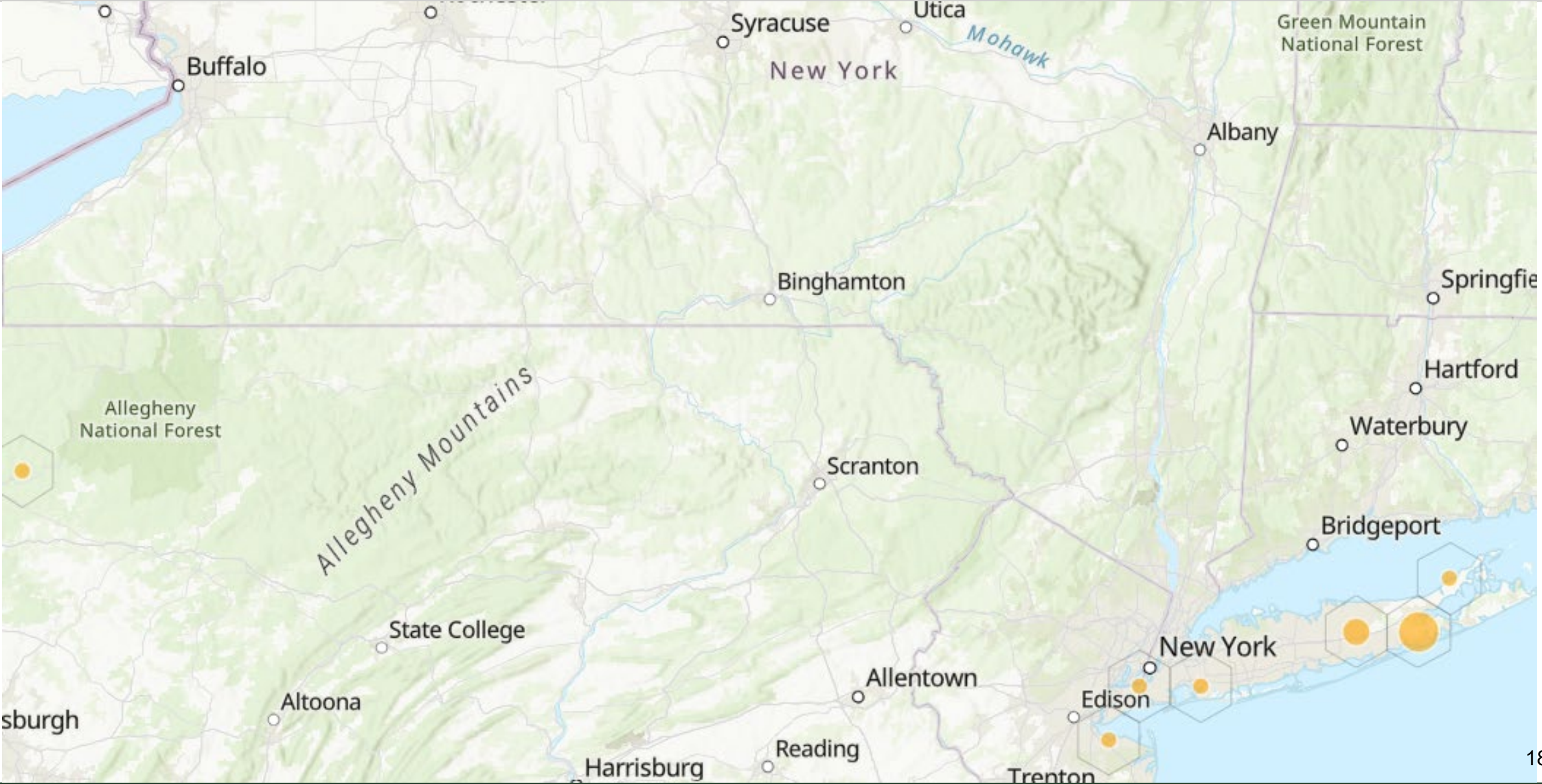
- Native to U.S. but outside its range
- Ornamental
- Herbaceous with creeping stems
- Spreads mainly through fragmentation
- Seed viability is still something we need to research
- Has been managed at all reported locations (but some patches on the Peconic River on LI are making a comeback)
- **Prohibited in New York (Part 575)**



USGS

2008 Gerald D. Carr

Floating water primrose (*Ludwigia peploides*) Reports



Animals

Round Goby (*Neogobius melanostomus*)

Northern Snakehead (*Channa argus*)

Marbled Crayfish (*Procambarus virginalis*)



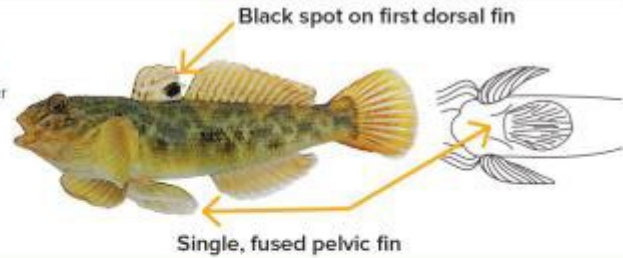
Ontario's Invading Species Awareness Program

Round Goby (*Neogobius melanostomus*)

Invasive

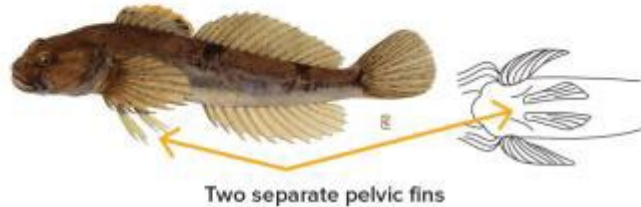
Round goby

Photo Credit: © Peter van der Sluijs/Wikimedia Commons/
CC-BY-SA-3.0/GFDL



Native look-alike

Sculpin

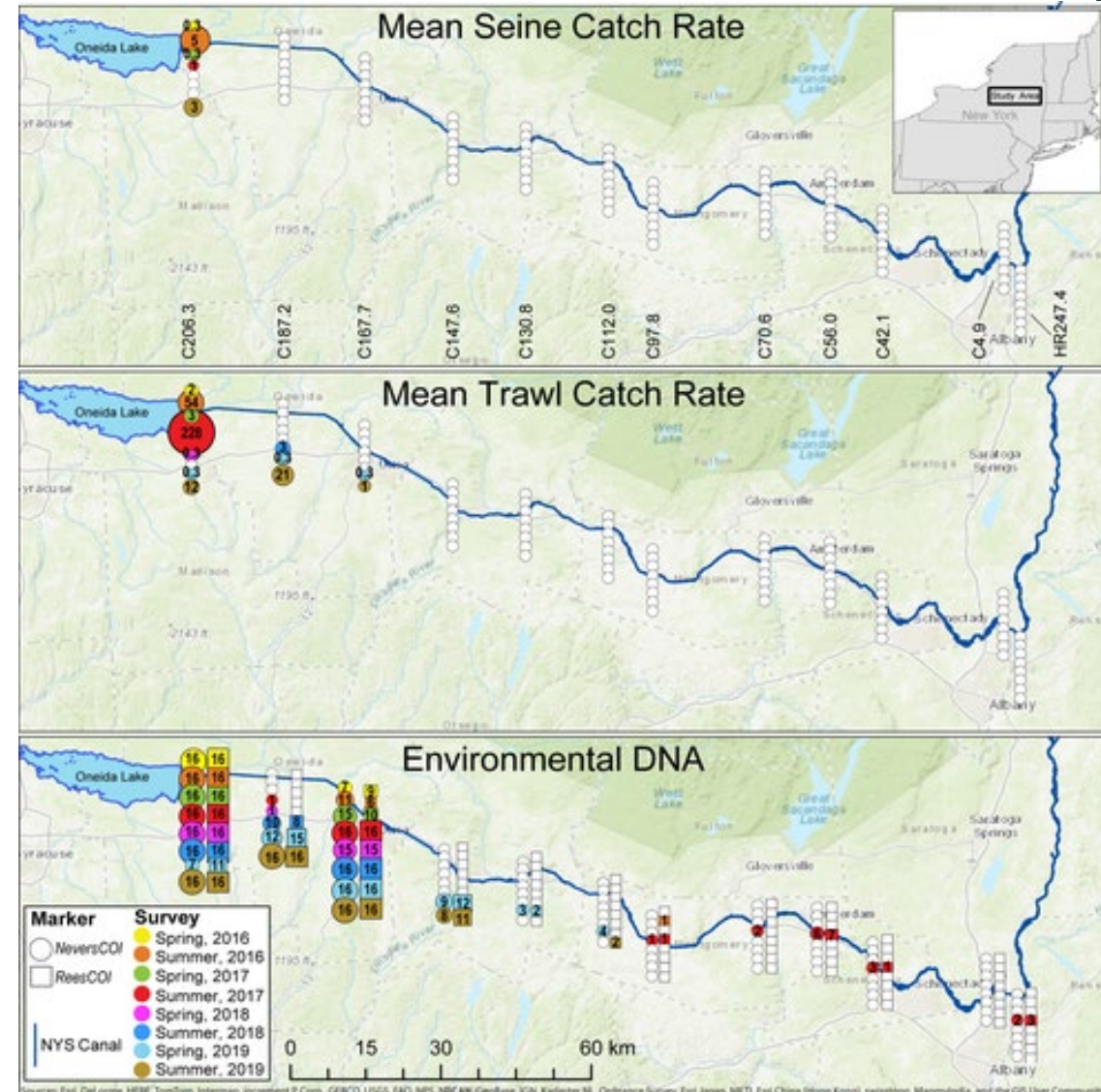


- Native to Black and Caspian Seas (Central Asia)
- Originally introduced in ballast water
- 4-10 inches
- Puffy cheeks
- Prominent black spot at the base of the first dorsal fin
- Single fused pelvic fin
- Significantly increase mercury content of sportfish that consume them
- Vector for viral hemorrhagic septicemia (VHS)

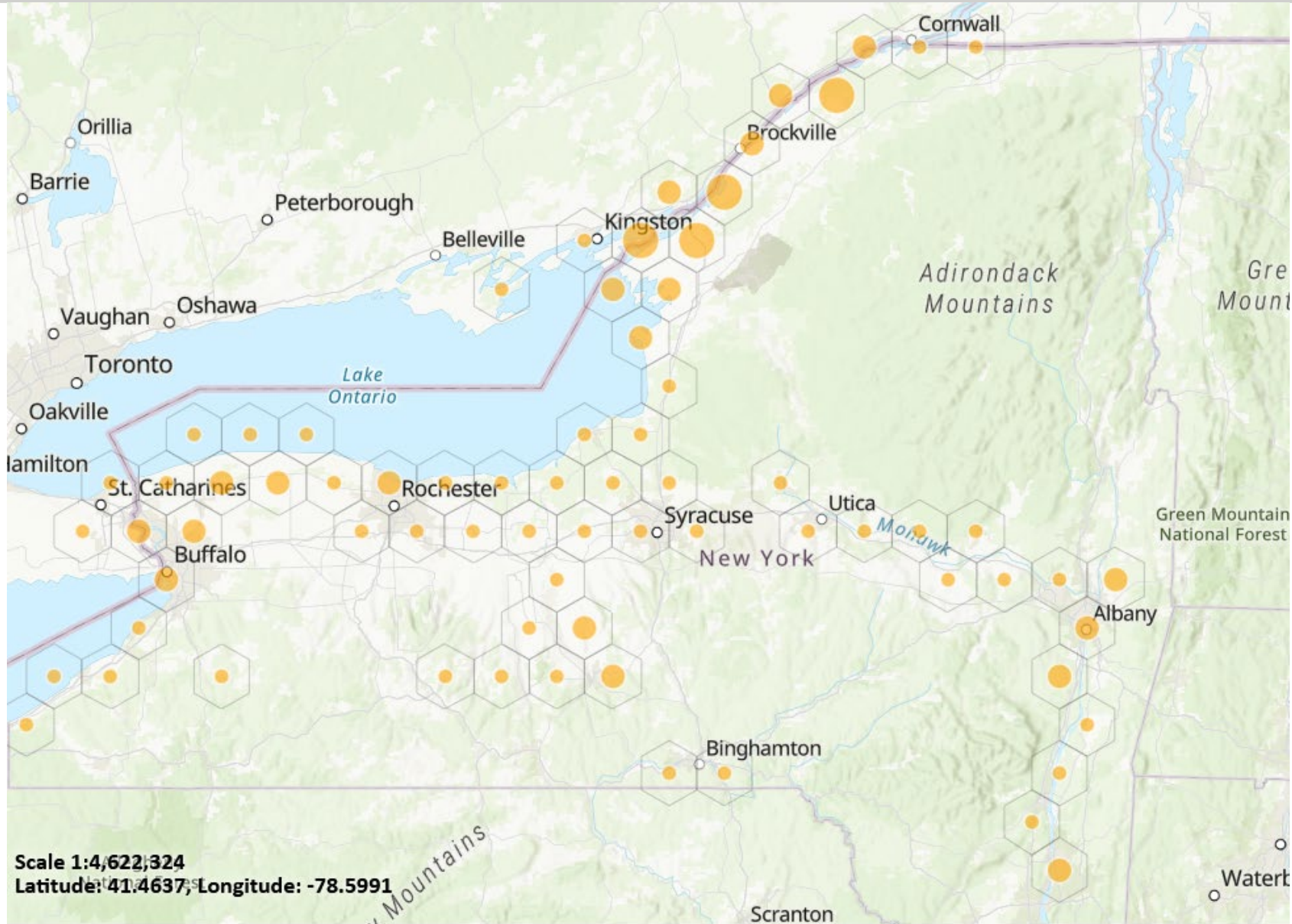
Round Goby dispersal into the Hudson River

United States Geological Survey

- Tracked dispersal through United States
- Erie Canal
 - Traditional gears
 - Environmental DNA
- Live fish captured at river confluence in spring 2021
 - Rapid downstream dispersal
 - ~ 60 miles downstream by fall
 - By 2025 furthest downstream
 - Fish in hand: Newburgh, NY
 - eDNA – George Washington Bridge

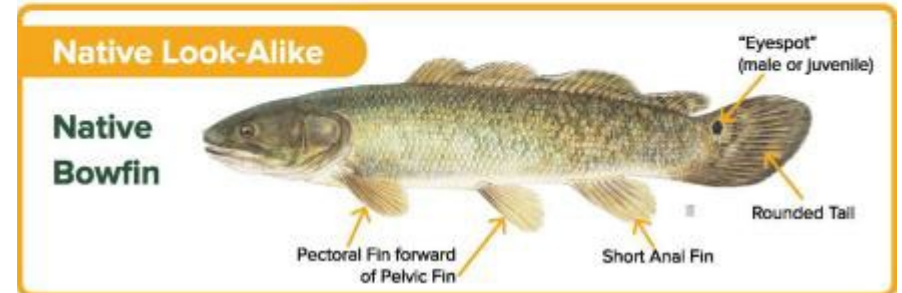
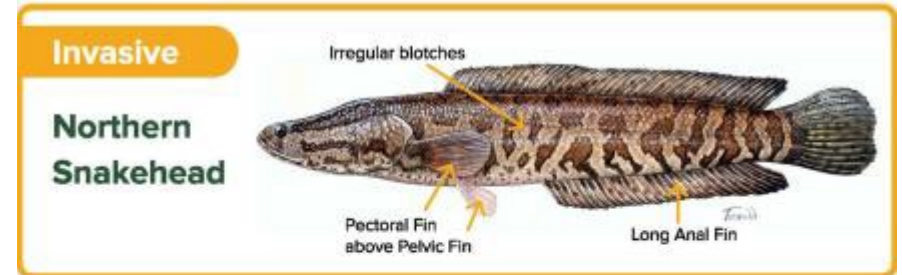


Round Goby reports

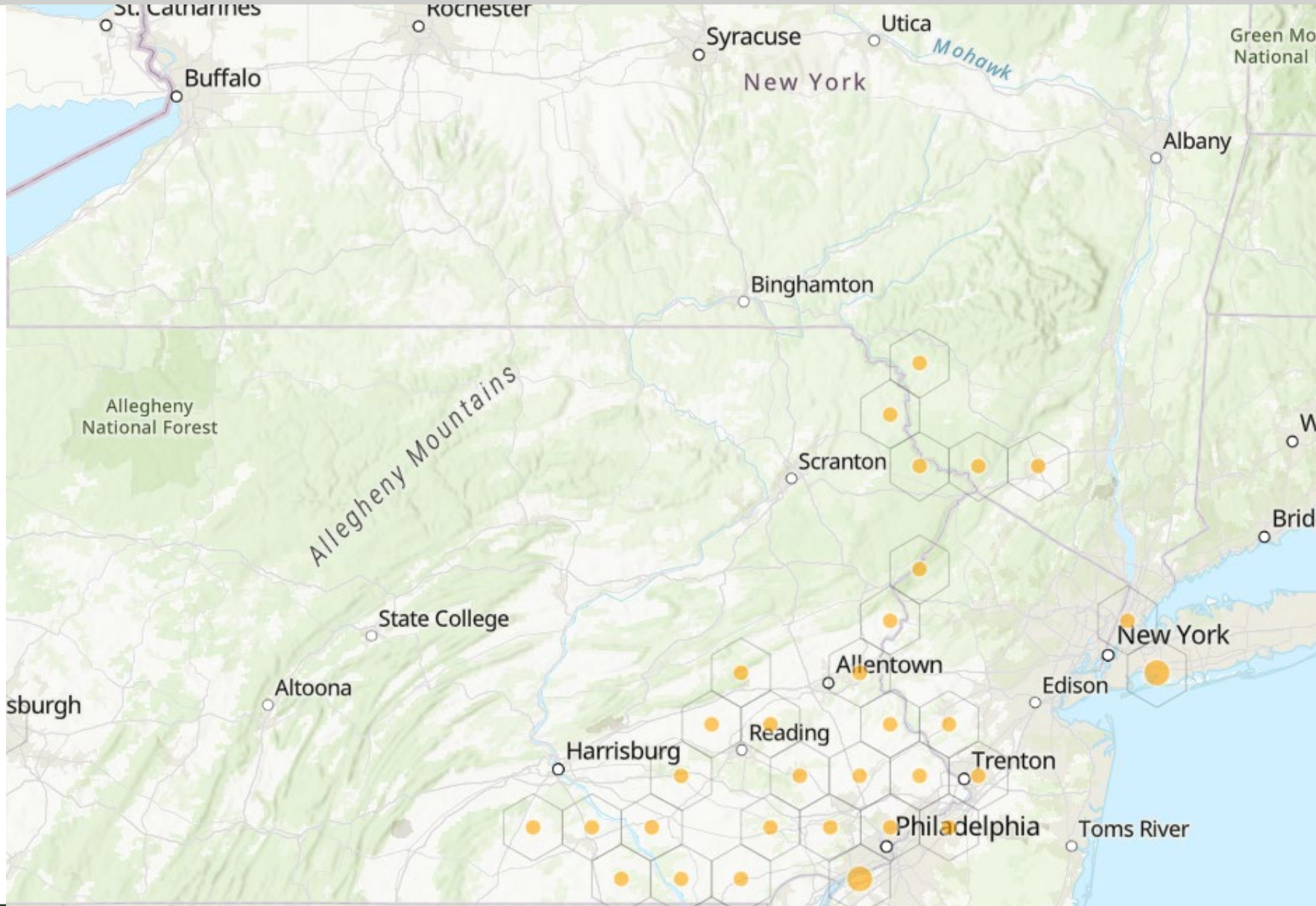


Northern Snakehead (*Channa argus*)

- Native to Asia
- Long, thin fish with a single fin running down the back
- Brown background color with dark splotches
- Somewhat flattened head and large mouth with many teeth
- Prefers stagnant shallow ponds or swamps but will inhabit canals, reservoirs, lakes, and rivers
- Compete with native fish for food and prey upon native fish species



Northern Snakehead reports



Marbled Crayfish (*Procambarus virginalis*)

- Not native to any location; originated in pet trade
- 4-5 inches in length
- Carapace has marble or streaked pattern in tan, blue, red, olive, or brown
- Able to self-clone; all populations are female
- One viable population found in a NYC waterbody
- **Not listed in Part 575**



Important Update!

- NYS Part 575 list is being updated based on multiple years-worth of assessment of proposed species
- The Invasive Species Advisory Committee has been leading the effort



Water chestnut (*Trapa natans*)

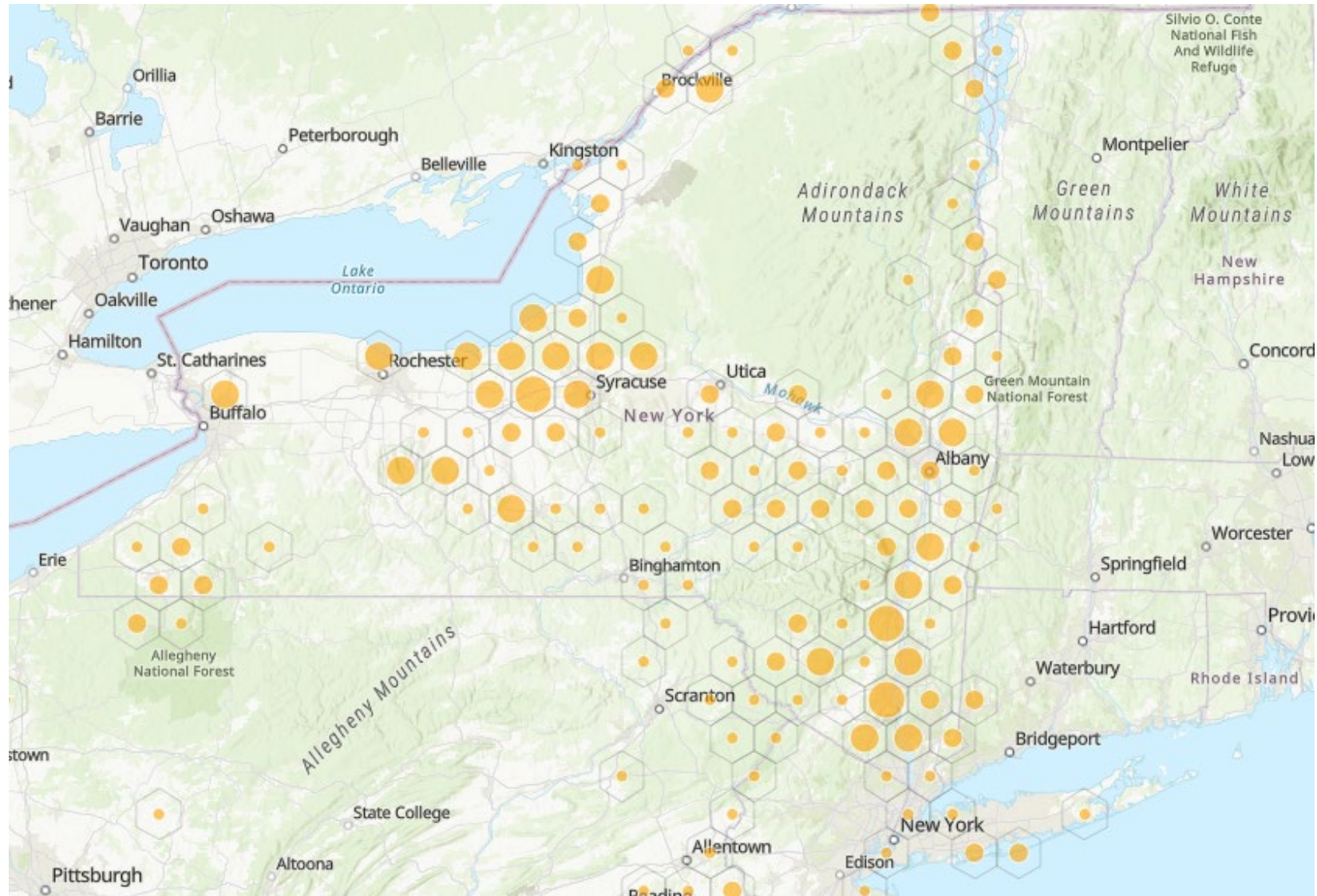
- Native to Europe, Asia, and Africa
- Triangular, toothed leaves with saw-toothed margins with submerged roots
- Fruit is a sharply, barbed nutlet
- Forms dense mats of floating vegetation
- First introduced to Scotia NY in the late 1800's
- Found in more than 40 counties



Mark Naylor, MD DNR



Water Chestnut Reports



Focus on Water Chestnut Management

Given its distribution is not a high priority species for control but is managed on a case-by-case basis

Small scale (< 0.50 acres)

- Combination of hand pulling and harvesting to create navigation paths at emergency access locations and to assist marinas along the Mohawk River (Region 4) and in Region 6 (Lakeview Wildlife Management Area) – Water Chestnut Strike Teams 2026-2027



Focus on Water Chestnut Management

Given its distribution is not a high priority species for control but is managed on a case-by-case basis

Large scale (> 0.50 acres)

- Harvesting in Lake Champlain continues (collaboration between NY, VT, and USACE) (began early 1980s)
- Herbicide application by aerial drone in CNY (300 acres) to improve navigability and recreation access in the Erie Canal and Cross Lake (2027-2029)



Resources for Water Chestnut Management

NYSDEC: <https://dec.ny.gov/nature/animals-fish-plants/water-chestnut>

NYIS Info: <https://nyis.info/species/water-chestnut/>

Guidelines for Management

Manual Removal: https://www.capitalregionprism.org/uploads/8/1/4/0/81407728/cr-prism_water_chestnut_response_guidelines_for_manual_removal.pdf

Mechanical Removal: https://www.capitalregionprism.org/uploads/8/1/4/0/81407728/cr-prism_water_chestnut_response_guidelines_for_mechanical_removal.pdf

Water Chestnut Management Planning Guide: <https://fingerlakesinvasives.org/wp-content/uploads/2020/10/Waterchestnut-planning-guide.pdf>

Funding Sources

Federal/Regional

- **U.S. Department of the Interior Funding Guide for Invasive Species Management:** https://www.doi.gov/sites/doi.gov/files/doi-funding-guide-for-invasive-species-issued-september-2022_0.pdf
- **USDA-USFS Cooperative Weed Management Areas** - <https://www.fs.usda.gov/r09/working-with-us/grants-agreements>
- **NFWF Sustain Our Great Lakes Program** - <https://www.nfwf.org/programs/sustain-our-great-lakes-program>
- **NFWF Five Star Grant Program** - <https://www.nfwf.org/programs/five-star-program>
- **Restore America's Estuaries (Great Lakes Restoration Community Grants Program)-** <https://estuaries.org/grants/#>
- **Great Lakes Panel Landing Blitz Small Grants Program** - <https://www.glc.org/work/blitz>

Funding Sources

NYS

- **DEC Invasive Species Grants Program:** <https://dec.ny.gov/nature/invasive-species/resources-regulations/invasive-species-grant-program>
- **DEC Water Quality Improvement Project (WQIP) Program:** <https://dec.ny.gov/nature/invasive-species/resources-regulations/invasive-species-grant-program>
- **DEC Mohawk River Watershed Grants Program:** <https://dec.ny.gov/nature/waterbodies/lakes-rivers/mohawk-river-watershed/grants>
- **DEC Hudson River Estuary Program Grants:** <https://dec.ny.gov/nature/waterbodies/oceans-estuaries/hudson-river-estuary-program/grants-funding-opportunities>
- **DOS Local Waterfront Revitalization Grant Program:** <https://dos.ny.gov/local-waterfront-revitalization-program>

Acknowledgements – Many thanks for our AIS Team!

Cathy McGlynn – AIS Coordinator
Steve Pearson – Research Scientist
Scott Jamieson – Watercraft
Inspection Steward Program
Coordinator
Regional AIS Coordinators:
Carlos Morantes-Ariza – Region
Ashley Morris – Region 3
Hannah Diebboll – Region 5
Jayla White - Region 6
Emily Timkey-Benzinger – Region 7
Lindsay Yoder – Region 9



Thank you!



Cathy McGlynn
NYSDEC
Invasive Species Coordination Section
catherine.mcglynn@dec.ny.gov



**Department of
Environmental
Conservation**