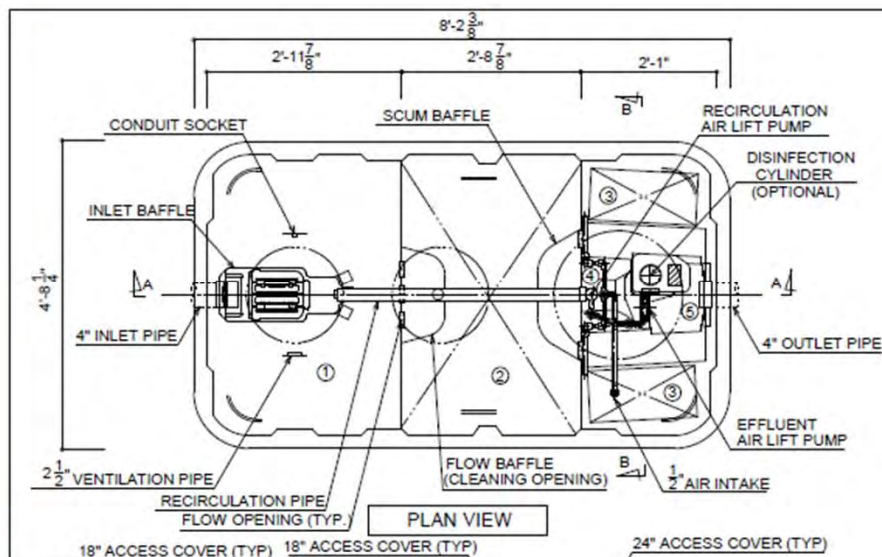


*Advanced
treatment and
it's Value for
lake
communities*





CRX II-7

①	Sedimentation Chamber	Volume	397 gal
②	Anaerobic Filtration Chamber	Volume	396 gal
③	Aerobic Contact Filtration Chamber	Volume	181 gal
④	Clarification Chamber	Volume	90 gal
⑤	Disinfection Chamber	Volume	6 gal
Total Volume		Volume	1069 gal
Specification			
Anaerobic Media	PP/PE	Filtration Rate	4.6 %
Board Type Aerobic media	PVC/PP/PE	Filtration Rate	1.7 %
Aerobic Media	PP/PE	Filtration Rate	5.5 %

Laboratory ID#: 23236472-01

Sample #:
Collection Address: BARN-Bla125-Fuj Dbox
Sample Location:

Matrix: Water - Waste Water
Sampled: 01/09/2023 12:30 By: BH
Received: 01/09/2023 12:35 By:
Turn Around: Standard

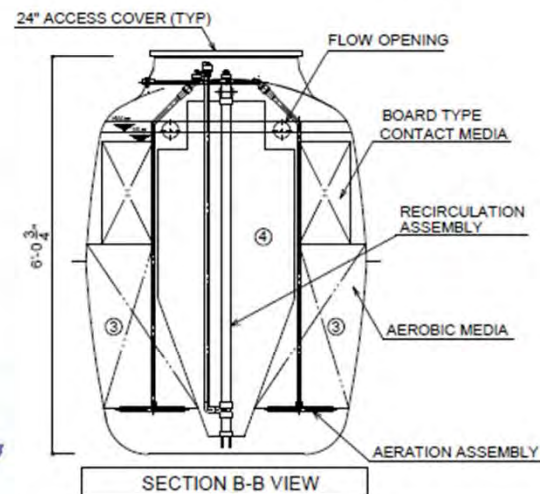
Test Parameters

ITEM	RESULT	UNITS	RL	MCL	METHOD #	ANALYST	TESTED	TIME
BOD (5 DAY) TEST	7.3	mg/L	2.0		SM 5210 B	CL	01/10/2023	
Phosphorus - Total	0.48	mg/L	0.020		SM 4500-P	CL	01/12/2023	

BOD sample was incubated 14 hours longer than allowed by the method. All Quality Control was within acceptance criteria. Re-analysis could not be performed due to the expiration of the method required holding time

Attached please find the laboratory certified parameter list.

Approved By: 
(Lab Manager)



			DATE: 09-14-2020
			DRAWN BY: SAIKA

FUJI CLEAN CRX II-7



FUJI CLEAN USA, LLC
41 GREENWOOD ROAD
BRUNSWICK, ME 04011
(207)406-2927
WWW.FUJICLEANUSA.COM