

# Forming a Coalition of Lake Associations

May 3rd, 2019  
NYSFOLA Conference

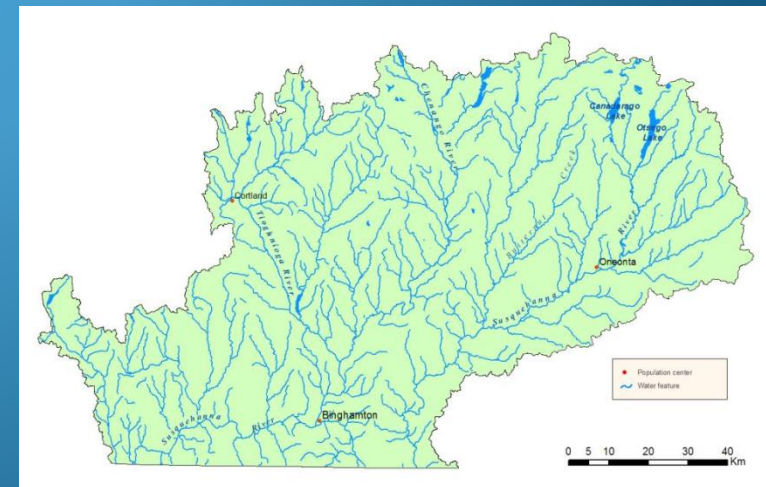
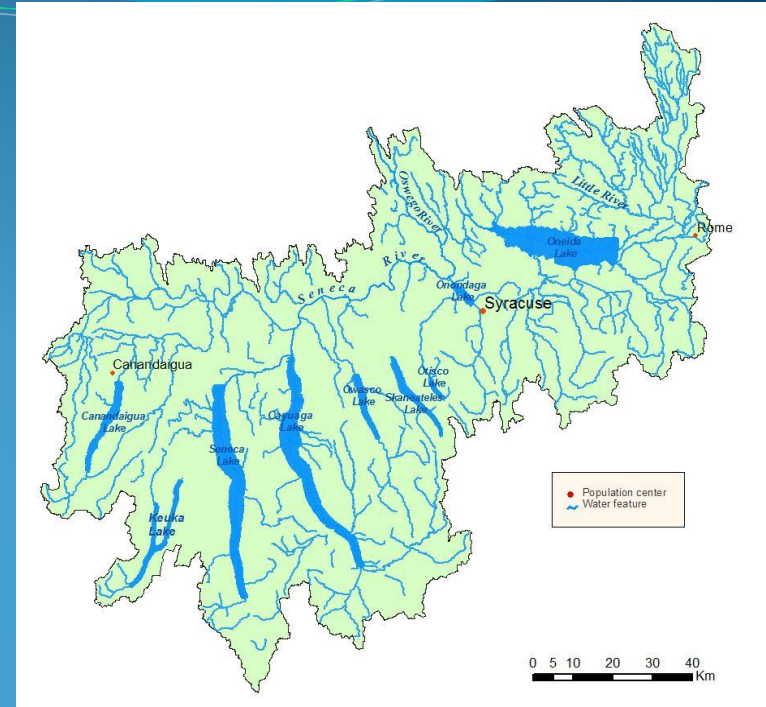


The Cortland-Onondaga Federation of Kettle Lake Associations, Inc.

# Our Watersheds



Upper Susquehanna River Basin  
Tioghnioaga River – Headwater s of the  
Susquehanna River to the Chesapeake Bay

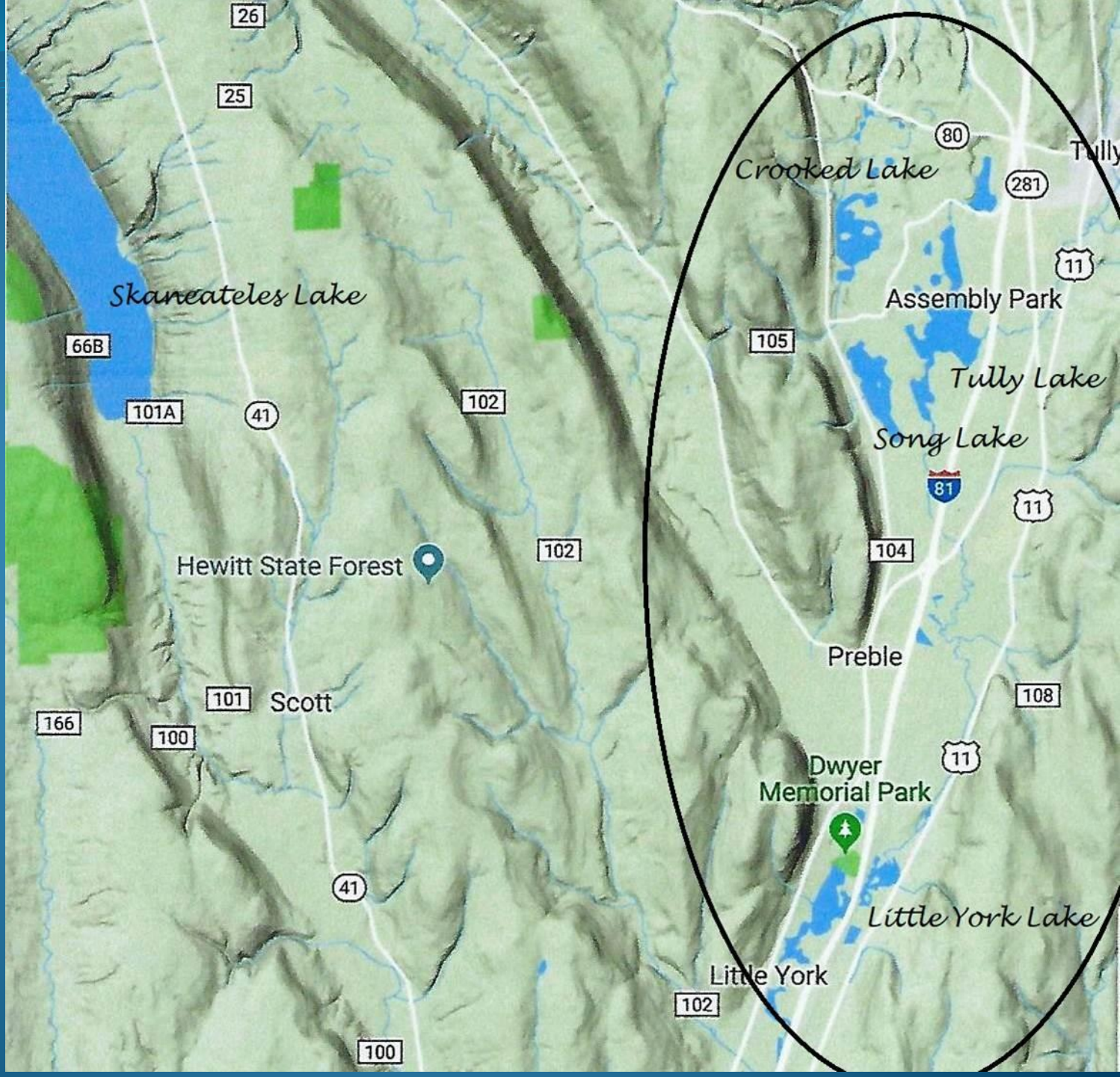


Upper Susquehanna River Basin



# Four Kettle Lakes

Our Kettle Lakes were formed at the same time as the Finger Lakes during final glacial retreat.





# Individual Associations

## Crooked Lake - Private

Homeowners Association began as a development, with Covenants – Early 1970s – from mandatory participation to 60%

## Little York Lake – County Boat Launch

Evolution will be described by Don Fisher

## Song Lake - Private

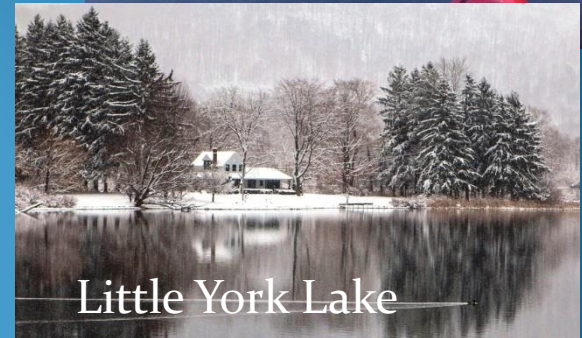
Formed in 1956 with recreational goals  
Membership is variable at around 60%.

## Tully Lake – DEC Boat Launch

Two associations  
One historical and  
one recreational .



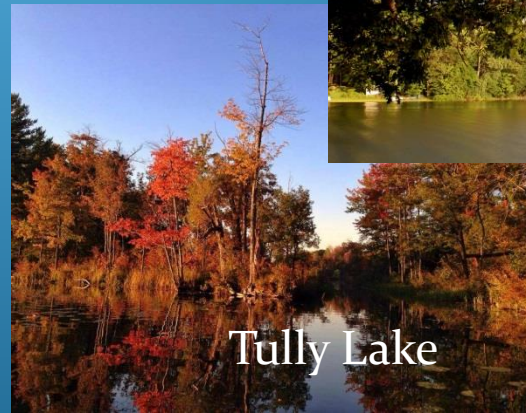
Crooked Lake



Little York Lake



Song Lake



Tully Lake



# The Concept and Structure

Work together to find solutions for common  
and individual lake issues through

- education and outreach
- collaboration
- mutual support

**Incorporated as 501 (c)(3) – Charitable/ Environmental  
September 9, 2009**

**NYS Charities Bureau Registration # 44-89-36**



# Why a 501 (c) (3)?

## Song Lake

Can only take donations from dues paying members.

Confined to work within the municipalities where we reside.

Cannot procure grants.

## One Time

NYS Corporate Filing

Annually – IRS 1099 - N

## C-OFOKLA

Can openly fundraise .

Donations may be tax deductible.

Wider Networking opportunities.

Could procure grants.... If your organization has the capacity for that.

## One Time

NYS Corporate Filing

NYS Charities Bureau Filing

Annually – IRS 1099 – N (depending on income and property ownership.)

If not exempt, would require NYS Charities Bureau annual filing (Char 500).

NOT required, but recommended – Annual reports to members, partners and donors.

Disclaimer – I am not a lawyer.

Always work with legal counsel.



## OBJECTIVES

## By-Laws

- To pool local resources, to provide an organized approach to grant writing, to improve educational programming, and to improve regional efficiency by working together on mutual goals.
- To collaborate on efforts to improve and protect water quality.
- To research and when possible, to implement cooperative lake improvement projects.
- To provide educational literature and opportunities to participating lake associations.
- To support efforts to secure private, local, state, and federal funds for lake management programs.
- To seek the support of local, county, and state agencies to develop and implement water quality management programs.
- To provide environmental awareness within and beyond the lake boundaries.
- To act and support efforts to address any adverse conditions affecting the quality of our water.

## Extend and Enhance Collaborations

- NYS DEC / NYSFOLA Coordinated Programs
  - including CSLAP
- SUNY Oneonta
- FL PRISM Program Partner – imap training and new macrophyte ID program
- EPA Programs – HABs Reporting through Cynoscope project and Bloomwatch
- SUNY – ESF – consultation and teaching
- Syracuse University – Environmental Finance Center Funding Assistance
- Cortland County Soil and Water
- Onondaga County Soil and Water



## Address Our Shared Concerns

- Threats from a growing number of aquatic invasive species,
- Stormwater - agricultural & suburban runoff
- Challenges of over development and Keyholing
- Overabundant growth of plants and/or algae
- The proliferation of harmful algal blooms (HABs),
- Education about, and practical implementation of, “Best Management Practices”
- Outdated septic systems
- All water quality issues
- Understanding Climate Changes
  - Preparing for warming waters and intense storms
- Development of undesirable infrastructure, such as gas pipelines or propane storage facilities

# Outreach and Education/ Communication

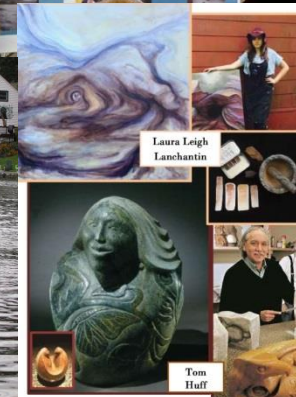
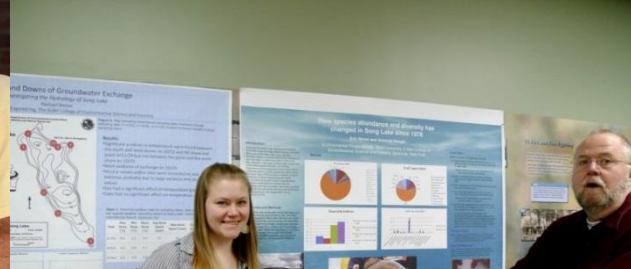
## Kettle Lakes Speakers Series

Presentations by professionals on a variety of topics impacting our watersheds, from AIS to Septic Systems.

Educational Walking Field Trips led by professionals.

Annual Art and Ecology Exhibits to educate, illustrate and excite others about our watershed work.

## Website and Facebook Page



**Art and Ecology:  
Artists and Their Passions IV**  
*Paintings from Mineral and Stone, Jewelry to Honor Nature, Indigenous Stone Carving*  
**TullyArtWorks Studio**  
**Sunday, October 14<sup>th</sup>**  
**1:00 to 4:00PM**  
*Three Extraordinary Artists*  
**Laura Leigh Lanchantin** - Paints and Paintings from Stone and Earth  
**Joanne DeSimone** - Metalworking Jewelry to Honor Nature  
**Tom Huff** - Indigenous Stone Carving  
Join us for this unique studio exhibit, conversations with the artists and refreshments at the newly renovated TullyArtWorks Studio, 5 Elm Street, Tully, NY





# Collaborations for Funding to Address the Threat of Invasive Species

## A comprehensive program to Address Aquatic Invasive Species

- Watercraft stewards at boat launches
- Signage and community outreach
- School programs
- Web site and social media

Funded by a 3-year, \$130,000 grant from DEC in partnership with a \$30,000 match.

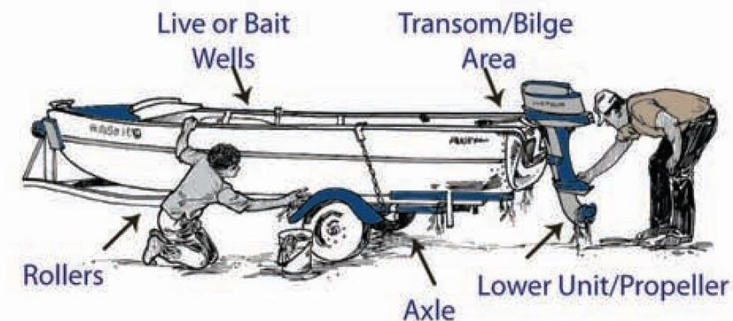
Cortland County

- Soil and Water
- C-OFOKLA
- SUNY-ESF
- Finger Lakes Institute



- Check for and remove any visible plants or debris
- Clean and drain your boat and equipment
- Dry everything that came into contact with water

### WATERCRAFT CHECK POINTS





# National Fish and Wildlife Foundation

## Technical Capacity Grant for the Chesapeake Bay

One Year - \$50,000

## Created Watershed Implementation Plans for mitigating stormwater in a chain of Kettle Lakes

### Grant Administrator

Syracuse University Environmental Finance Center

### Grant Contract

Princeton Hydro

### Other Participants

Cortland County Soil and Water  
Cortland-Onondaga Federation of Kettle Lake Assoc.

### Beneficiaries

Crooked Lake, Little York Lake,  
Song Lake & Tully Lake

## Collaborations for Funding to Address Stormwater Runoff



### **Song Lake Watershed Implementation Plan** Town of Preble, Cortland County, New York

#### **Prepared for:**

Cortland -Onondaga Federation of Kettle Lake Associations  
Attn: Ms. Tarki Heath  
1900 Rittenhouse Square  
Tully, New York 13159

#### **Prepared by:**

Princeton Hydro, LLC  
203 Exton Commons  
Exton, Pennsylvania 19341  
(P) 610.524.4220  
(F) 610.524.9434  
[www.princetonhydro.com](http://www.princetonhydro.com)  
Offices in New Jersey, Pennsylvania, Maryland  
and Connecticut



**November 2017**



*Funding: This report was funded by the National Fish and Wildlife Foundation Chesapeake Bay Technical Grants Program for Stormwater Management*

# Next – Finding the right Partners

## Onondaga County Soil and Water District 2018

- Piloted two SHORESCAPING projects
- Procured funding through Soil and Water for \$6,800.00
- Planning done by Upper Susquehanna Coalition
- Planting done by Onondaga Earth Corps

2019

- Two more projects now being planned

## Cortland County Soil and Water District

- Planning to roll out pilot project this year



# Collaborations to Address Informed Decision-making

## Watershed Improvement Plans for Three Lakes

*The Tully Kettle Lakes Area –  
What a Unique Watershed!*  
Stradder Caves – 10:15 - Saturday

SUNY-Oneonta

NYSFOLA

## Extended Lake Sampling and Studies

National Science Foundation Study on Contaminants of Emerging Concern

***Empowering Citizen Scientists to  
Monitor Chemicals of Emerging  
Concern in NY Lakes***

Dr, Teng Zeng and  
MaryGail Perkins  
2:00 Today

Syracuse University  
Upstate Freshwater Institute

SUNY - College of  
Environmental Science and Forestry  
Contaminants of Emerging Concern



# Collaborations to Address Keyhole Developments

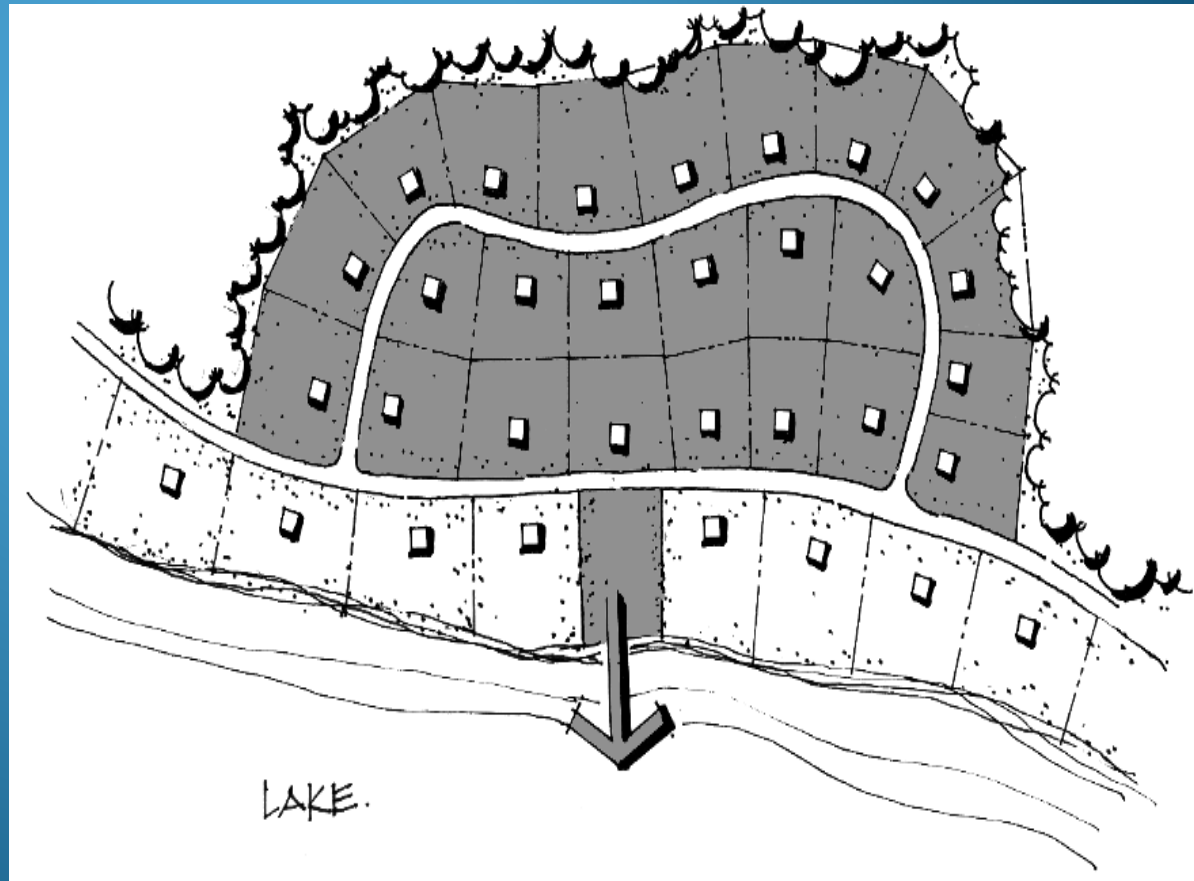
## Reach out to Town and Planning Boards

Keyholing Ordinances provide guidelines for towns to protect lakes

When a single waterfront lot is used to permit access to a larger development located away from the lake.

This allows a large number of individuals to gain access to the lake through a small corridor of lake property.

**This action exceeds the natural access that the existing shoreline provides.**



# Find an organization that will help....

## Public

Soil and Water Districts  
Towns and Municipalities

## Private

Syracuse University – Environmental  
Finance Center: [kadodson@syr.edu](mailto:kadodson@syr.edu)

**Resources at this  
conference!**



# Our Corporate and Watershed Partners

CNY Land Trust – local - Owns and manages over 49 properties in CNY including Tracy Lake and Part of Mud Pond.



Tully Arts Council



Crooked Lake  
Family

*The Cappa  
Family*

Saint Charles Bay  
Tully Lake

**Saint Charles  
Bay Cares**

AXI Digital – Promotes sustainable options through a range of services including digital promotions and communications consulting on Little York Lake.





Know your watershed(s) – hydrologically and politically,  
Work with the experts,  
Know your needs,  
Collaborate, collaborate, collaborate!  
Be open to ideas.

[www.COFOKLA.org](http://www.COFOKLA.org)

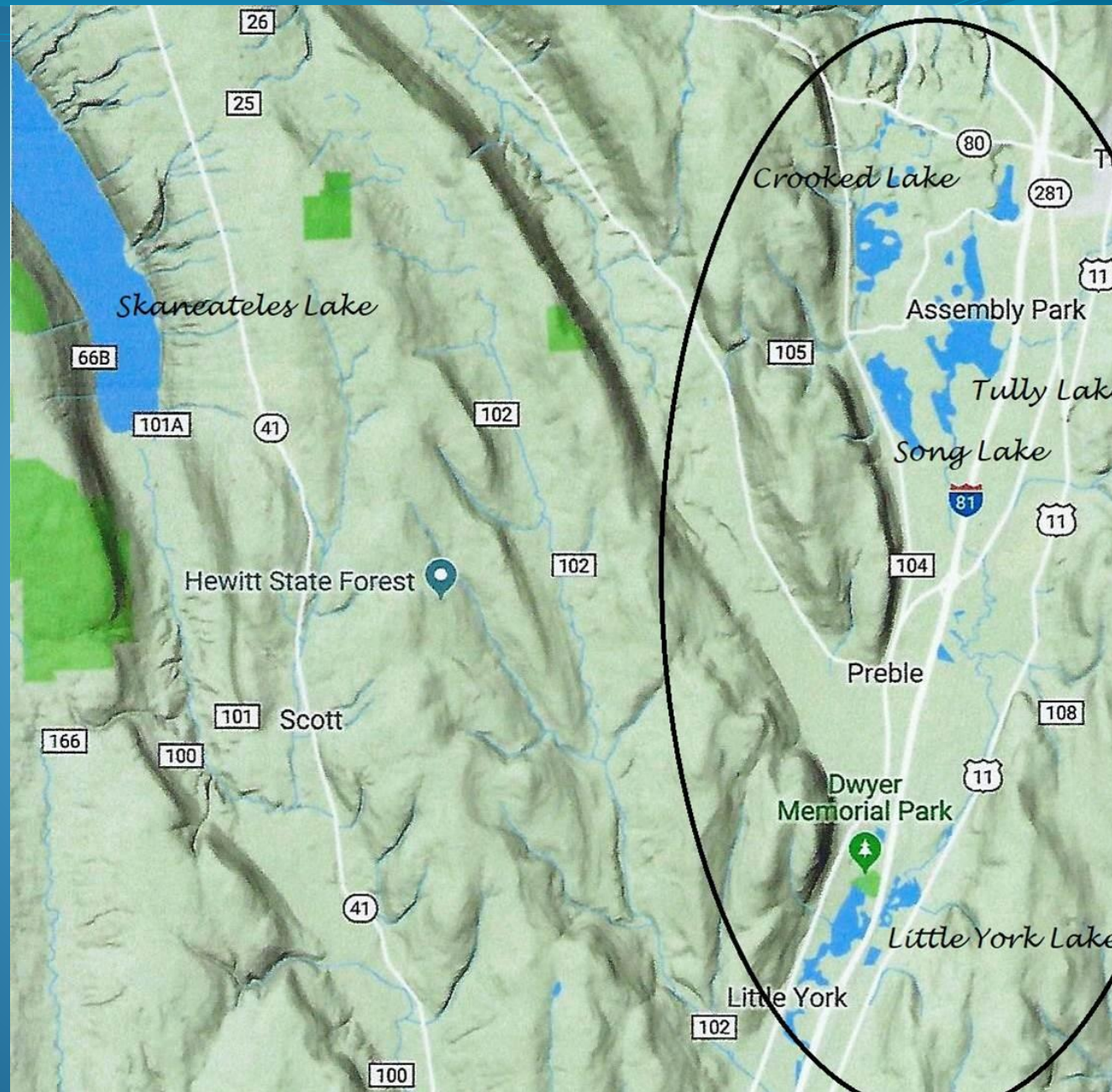
**Let's Talk!**

Tarki Heath  
cofokla@gmail.com

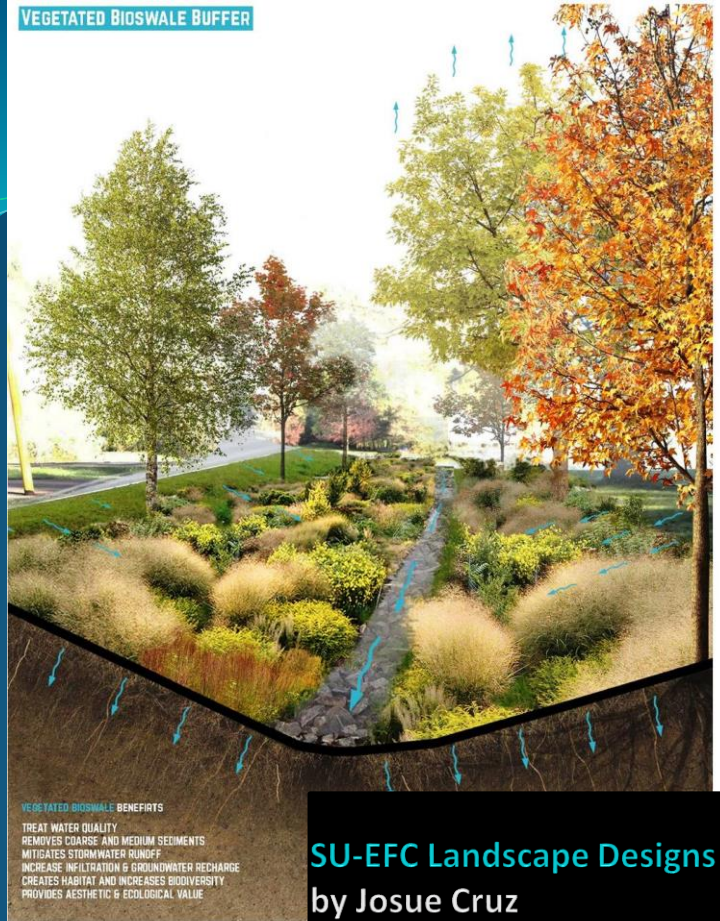
[www.cofokla.org](http://www.cofokla.org)  
[Cofokla@gmail.com](mailto:Cofokla@gmail.com)

C-OFOKLA

CORTLAND-ONONDAGA  
FEDERATION OF KETTLE LAKE  
ASSOCIATIONS







# Public Participation and Active Engagement

Town Hall Meetings

Resident assistance  
during Princeton  
Hydro testing

Open & Advertised  
Public Meetings

